



**ELECTRONIC COPY**

## LABORATORY GROWN DIAMOND REPORT

October 19, 2022	
IGI Report Number	LG551208136
Description	LABORATORY GROWN DIAMOND
Shape and Cutting Style	ROUND BRILLIANT
Measurements	7.72 - 7.76 X 4.79 MM

## GRADING RESULTS

Carat Weight	1.76 CARAT
Color Grade	E
Clarity Grade	VS 2
Cut Grade	IDEAL

### ADDITIONAL GRADING INFORMATION

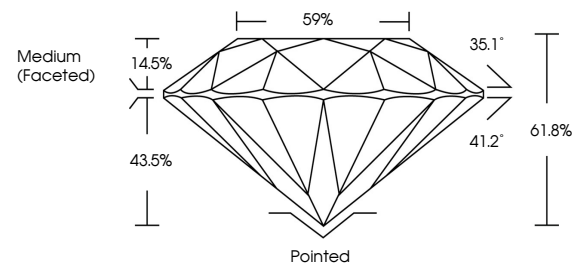
Polish	EXCELLENT
Symmetry	EXCELLENT
Fluorescence	NONE

Inscription(s) LABGROWN  LG551208136

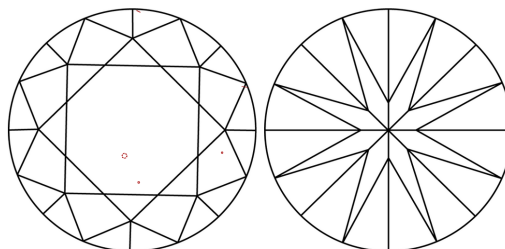
Comments: This Laboratory Grown Diamond was created by Chemical Vapor Deposition (CVD) growth process and may include post-growth treatment.  
Type IIa

LG551208136

## PROPORTIONS



## CLARITY CHARACTERISTICS

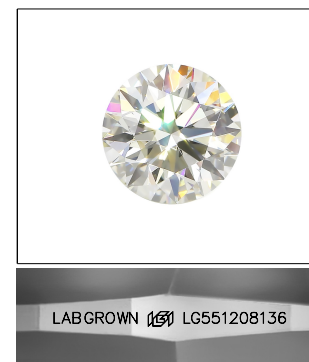


### KEY TO SYMBOLS

Red symbols indicate internal characteristics.  
Green symbols indicate external characteristics.

## GRADING SCALES

COLOR GRADING SCALE	CL		NC	FT	VLT	LT
	COLORLESS D-F		NEAR COLORLESS G-J	FAINT K-M	VERY LIGHT N-R	LIGHT S-Z
CLARITY (10x) GRADING SCALE	FL	IF	VVS	VS	SI	I
	FLAWLESS INTERNALLY FLAWLESS		VERY VERY SLIGHTLY INCLUDED	VERY SLIGHTLY INCLUDED	SLIGHTLY INCLUDED	INCLUDED

LASERSCRIBE<sup>SM</sup>

Sample Image Used

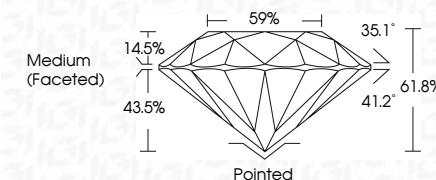


© IGI 2020, International Gemological Institute

FD - 10 20

LABORATORY GROWN DIAMOND REPORT

October 19, 2022	
IGI Report Number	LG551208136
Description	LABORATORY GROWN DIAMOND
Shape and Cutting Style	ROUND BRILLIANT
Measurements	7.72 - 7.76 X 4.79 MM
<b>GRADING RESULTS</b>	
Carat Weight	1.76 CARAT
Color Grade	E
Clarity Grade	VS 2
Cut Grade	IDEAL



### ADDITIONAL GRADING INFORMATION

Polish	EXCELLENT
Symmetry	EXCELLENT
Fluorescence	NONE
Inscription(s)	LABGROWN (15) LG551208136

Comments: This Laboratory Grown Diamond was created by Chemical Vapor Deposition (CVD) growth process and may include post-growth treatment.  
Type IIa



October 19, 2022	GI Report No. LGS51203136	1.76 CARAT	
SOUND BRILLIANT	7.2 - 7.6 X 4.7 MM	E	
Color Grade	Clarity Grade	VS2	Pointed
Carat Weight	Cut Grade	IDEAL	EXCELLENT
Depth	Table	61.8%	EXCELLENT
Girdle	Flare	59%	NONE
Medium (Faceted)			LARGESIDE (60°)
			1.650/1.22/1.56
Culet	Symmetry		Comments:
Polish	Fluorescence		This Laboratory Grown Diamond was created by Chemical Vapor Deposition (CVD) growth process and may include natural inclusions and treatment.
	Inscriptions		Type Ia

**Comments:** This Laboratory Grown Diamond was created by Chemical Vapor Deposition (CVD) growth process and may include post-growth treatment.