



**ELECTRONIC COPY**

## LABORATORY GROWN DIAMOND REPORT

October 11, 2022

IGI Report Number **LG550266730**

Description	LABORATORY GROWN DIAMOND
-------------	-----------------------------

Shape and Cutting Style **OVAL BRILLIANT**

Measurements 10.33 X 7.12 X 4.40 MM

## GRADING RESULTS

Carat Weight 2.01 CARATS

Color Grade E

Clarity Grade WS 2

### ADDITIONAL GRADING INFORMATION

Polish EXCELLENT

Symmetry **EXCELLENT**

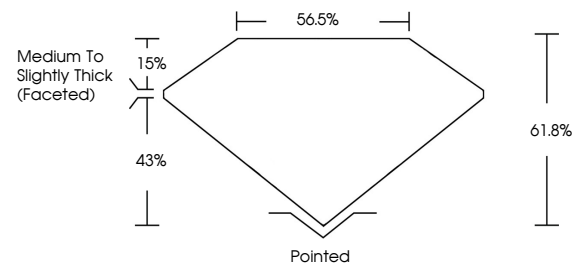
Fluorescence **NONE**

Inscription(s) LABGROWN  LG550266730

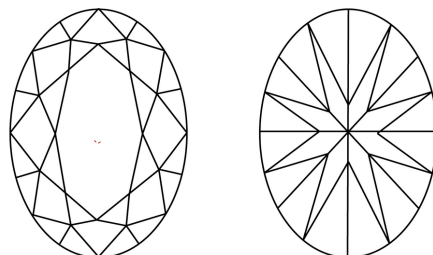
Comments: This Laboratory Grown Diamond was created by Chemical Vapor Deposition (CVD) growth process and may include post-growth treatment.  
Type IIa

LG550266730

## PROPORTIONS



## CLARITY CHARACTERISTICS

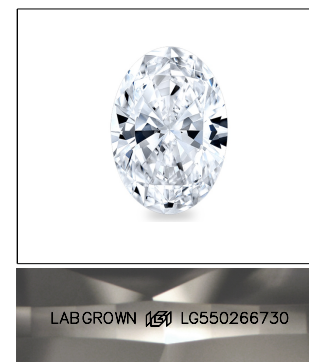


### KEY TO SYMBOLS

Red symbols indicate internal characteristics.  
Green symbols indicate external characteristics.

## GRADING SCALES

COLOR GRADING SCALE	CL		NC	FT	VL	LT
	COLORLESS D-F		NEAR COLORLESS G-J	FAINT K-M	VERY LIGHT N-R	LIGHT S-Z
CLARITY (10x) GRADING SCALE	FL	IF	VVS	VS	SI	I
	FLAWLESS INTERNALLY FLAWLESS		VERY VERY SLIGHTLY INCLUDED	VERY SLIGHTLY INCLUDED	SLIGHTLY INCLUDED	INCLUDED

LASERSCRIBE<sup>SM</sup>

Sample Image Used



© IGI 2020, International Gemological Institute

FD - 10 20

LABORATORY GROWN DIAMOND REPORT

October 11, 2022	
IGI Report Number	LG550266730
Description	LABORATORY GROWN

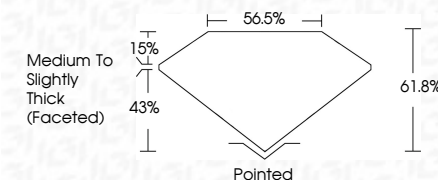
Shape and Cutting Style **OVAL BRILLIANT**

Measurements **10.33 X 7.12 X 4.40 MM**

## GRADING RESULTS

Carat Weight **2.01 CARATS**

Color Grade E

Clarity Grade VVS 2

### ADDITIONAL GRADING INFORMATION

Polish **EXCELLENT**Symmetry **EXCELLENT**Fluorescence **NONE**

Inscription(s) LABGROWN 15 LG550266730

Comments: This Laboratory Grown Diamond was created by Chemical Vapor Deposition (CVD) growth process and may include post-growth treatment.  
Type IIa



October 11, 2022	201 CARBATS
G/ Report No. LG50265790	E
CVAL BROWNIANT	VIS 2
10.33 X 7.12 X 4.40 MM	61.9%
	55.5%
	Medium to Slightly Thick (focussed)
	Pointed
	EXCELLENT
	EXCELLENT
	NONE
	LASERROWN (65)
	LG50265790
Comments:	
This Laboratory Group Diamond was tested using Laserrown (65) and a CVD growth process and may include post-growth treatment. Type IIC	