



ELECTRONIC COPY

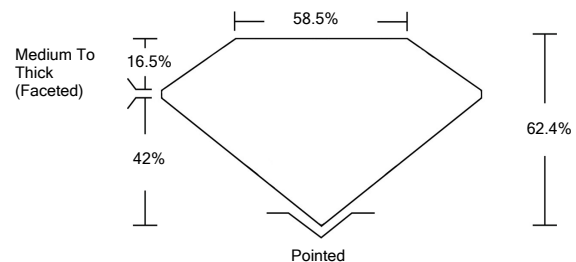
LABORATORY GROWN DIAMOND REPORT

| | |
|---------------------------------------|-------------------------------------|
| January 27, 2022 | |
| IGI Report Number | LG514269116 |
| Description | LABORATORY GROWN DIAMOND |
| Shape and Cutting Style | PEAR BRILLIANT |
| Measurements | 11.75 X 7.55 X 4.71 MM |
| GRADING RESULTS | |
| Carat Weight | 2.53 CARATS |
| Color Grade | F |
| Clarity Grade | VS 1 |
| ADDITIONAL GRADING INFORMATION | |
| Polish | EXCELLENT |
| Symmetry | EXCELLENT |
| Fluorescence | NONE |
| Inscription(s) | LABGROWN IGI LG514269116 |

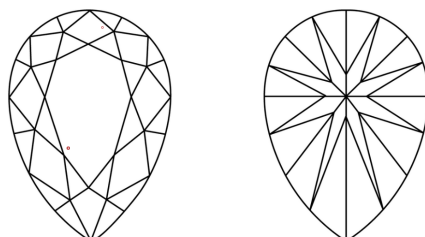
Comments: This Laboratory Grown Diamond was created by Chemical Vapor Deposition (CVD) growth process and may include post-growth treatment.
Type IIa

LG514269116

PROPORTIONS



CLARITY CHARACTERISTICS

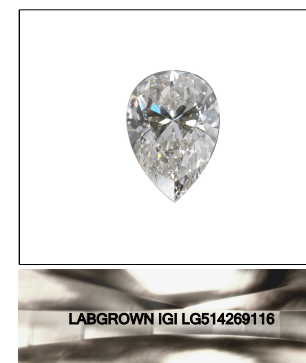


KEY TO SYMBOLS

Red symbols indicate internal characteristics.
Green symbols indicate external characteristics.

GRADING SCALES

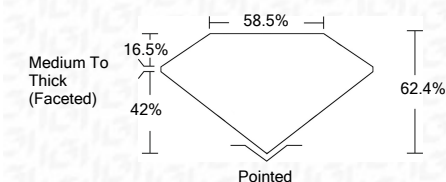
| | | | | | | |
|-----------------------------|------------------------------|-----------------------------|------------------------|-------------------|-----------|---|
| COLOR GRADING SCALE | CL | NC | FT | VLT | LT | |
| | COLORLESS D-F | NEAR COLORLESS G-J | FAINT K-M | VERY LIGHT N-R | LIGHT S-Z | |
| CLARITY (10x) GRADING SCALE | FL | IF | VVS | VS | SI | I |
| | FLAWLESS INTERNALLY FLAWLESS | VERY VERY SLIGHTLY INCLUDED | VERY SLIGHTLY INCLUDED | SLIGHTLY INCLUDED | INCLUDED | |



LASERSCRIBESM

Sample Image Used

| | |
|-------------------------|-------------------------------------|
| January 27, 2022 | |
| IGI Report Number | LG514269116 |
| Description | LABORATORY GROWN DIAMOND |
| Shape and Cutting Style | PEAR BRILLIANT |
| Measurements | 11.75 X 7.55 X 4.71 MM |
| GRADING RESULTS | |
| Carat Weight | 2.53 CARATS |
| Color Grade | F |
| Clarity Grade | VS 1 |



ADDITIONAL GRADING INFORMATION

| | |
|----------------|---------------------------------|
| Polish | EXCELLENT |
| Symmetry | EXCELLENT |
| Fluorescence | NONE |
| Inscription(s) | LABGROWN IGI LG514269116 |

Comments: This Laboratory Grown Diamond was created by Chemical Vapor Deposition (CVD) growth process and may include post-growth treatment.
Type IIa



IGI

| | |
|----------------------------|--|
| January 27, 2022 | |
| IGI Report No. LG514269116 | |
| PEAR BRILLIANT | |
| 11.75 X 7.55 X 4.71 MM | |
| 2.53 CARATS | |
| F | |
| VS 1 | |
| 62.4% | |
| 58.5% | |
| Medium To Thick (Faceted) | |
| Pointed | |
| EXCELLENT | |
| EXCELLENT | |
| NONE | |
| LABGROWN IGI LG514269116 | |

Comments: This Laboratory Grown Diamond was created by Chemical Vapor Deposition (CVD) growth process and may include post-growth treatment.
Type IIa