



ELECTRONIC COPY

LABORATORY GROWN DIAMOND REPORT

July 20, 2022	
IGI Report Number	LG532256110
Description	LABORATORY GROWN DIAMOND
Shape and Cutting Style	ROUND BRILLIANT
Measurements	6.40 - 6.46 X 3.98 MM

GRADING RESULTS

Carat Weight	1.00 CARAT
Color Grade	F
Clarity Grade	VS 1
Cut Grade	IDEAL

ADDITIONAL GRADING INFORMATION

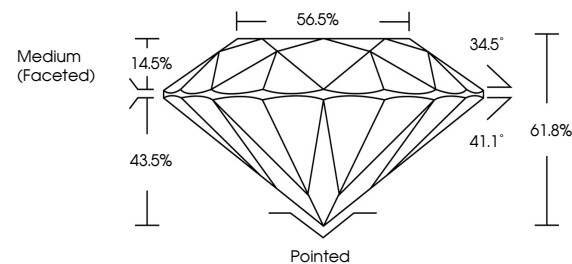
Polish	EXCELLENT
Symmetry	EXCELLENT
Fluorescence	NONE

Inscription(s) LABGROWN | G | LG532256110

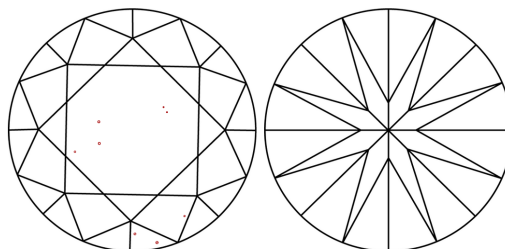
Comments: This Laboratory Grown Diamond was created by Chemical Vapor Deposition (CVD) growth process and may include post-growth treatment.
Type IIa

LG532256110

PROPORTIONS



CLARITY CHARACTERISTICS

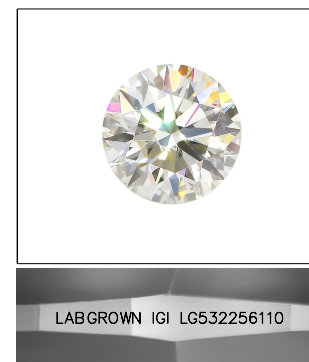


KEY TO SYMBOLS

Red symbols indicate internal characteristics.
Green symbols indicate external characteristics.

GRADING SCALES

COLOR GRADING SCALE	CL		NC		FT		VLT		LT	
	COLORLESS D-F		NEAR COLORLESS G-J		FAINT K-M		VERY LIGHT N-R		LIGHT S-Z	
CLARITY (10x) GRADING SCALE	FL IF		VVS		VS		SI		I	
	FLAWLESS INTERNALLY FLAWLESS		VERY VERY SLIGHTLY INCLUDED		VERY SLIGHTLY INCLUDED		SLIGHTLY INCLUDED		INCLUDED	

LASERSCRIBESM

Sample Image Used

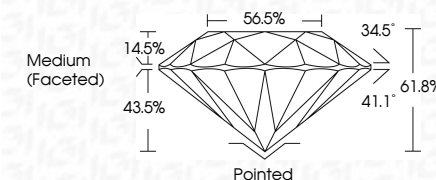


© IGI 2020, International Gemological Institute

FD - 10 20

LABORATORY GROWN DIAMOND REPORT

July 20, 2022	
IGI Report Number	LG532256110
Description	LABORATORY GROWN DIAMOND
Shape and Cutting Style	ROUND BRILLIANT
Measurements	6.40 - 6.46 X 3.98 MM
GRADING RESULTS	
Carat Weight	1.00 CARAT
Color Grade	F
Clarity Grade	VS 1
Cut Grade	IDEAL



ADDITIONAL GRADING INFORMATION

Polish	EXCELLENT
Symmetry	EXCELLENT
Fluorescence	NONE
Inscription(s)	LABGROWN IGI LG532256110

Inscription(s) LABGROWN IGI LG532256110

Comments: This Laboratory Grown Diamond was created by Chemical Vapor Deposition (CVD) growth process and may include post-growth treatment.
Type IIa



July 20, 2022	G Report No. LGS92264110	SOUND BRILLIANT	ROUND	6-6 1/8 x 5.98 MM	1.00 CARAT	F	VVS 1	ID54L	61.8%	56.8%	Medium Faceted	Parked	Excellent	Excellent	NONE	LARGE SQW (G)	LGSS2264110	Comments:	The Laboratory Grown Diamond was created by chemical vapor deposition (CVD) and may include post-growth treatment.	Type IIA
----------------------	---------------------------------	------------------------	--------------	--------------------------	-------------------	----------	--------------	--------------	--------------	--------------	-----------------------	---------------	------------------	------------------	-------------	----------------------	--------------------	------------------	---	-----------------