



ELECTRONIC COPY

LABORATORY GROWN DIAMOND REPORT

July 21, 2022	
IGI Report Number	LG537217305
Description	LABORATORY GROWN DIAMOND
Shape and Cutting Style	ROUND BRILLIANT
Measurements	6.62 - 6.66 X 4.00 MM

GRADING RESULTS

Carat Weight	1.07 CARAT
Color Grade	F
Clarity Grade	VS 1
Cut Grade	IDEAL

ADDITIONAL GRADING INFORMATION

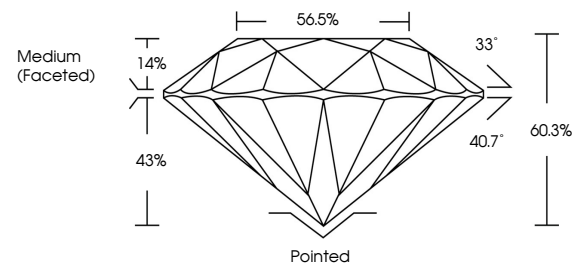
Polish	EXCELLENT
Symmetry	EXCELLENT
Fluorescence	NONE

Inscription(s) LABGROWN IGI LG537217305

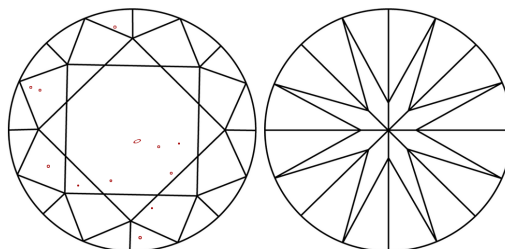
Comments: This Laboratory Grown Diamond was created by Chemical Vapor Deposition (CVD) growth process and may include post-growth treatment.
Type IIa

LG537217305

PROPORTIONS



CLARITY CHARACTERISTICS

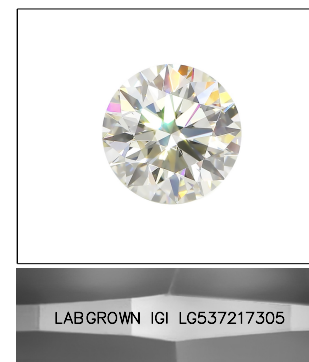


KEY TO SYMBOLS

Red symbols indicate internal characteristics.
Green symbols indicate external characteristics.

GRADING SCALES

COLOR GRADING SCALE	CL		NC	FT	VLT	LT
	COLORLESS D-F		NEAR COLORLESS G-J	FAINT K-M	VERY LIGHT N-R	LIGHT S-Z
CLARITY (10x) GRADING SCALE	FL	IF	VVS	VS	SI	I
	FLAWLESS INTERNALLY FLAWLESS		VERY VERY SLIGHTLY INCLUDED	VERY SLIGHTLY INCLUDED	SLIGHTLY INCLUDED	INCLUDED

LASERSCRIBESM

Sample Image Used

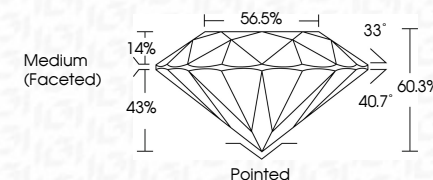


© IGI 2020, International Gemological Institute

FD - 10 20

LABORATORY GROWN DIAMOND REPORT

July 21, 2022	
IGI Report Number	LG537217305
Description	LABORATORY GROWN DIAMOND
Shape and Cutting Style	ROUND BRILLIANT
Measurements	6.62 - 6.66 X 4.00 MM
GRADING RESULTS	
Carat Weight	1.07 CARAT
Color Grade	F
Clarity Grade	VS 1
Cut Grade	IDEAL



ADDITIONAL GRADING INFORMATION

Polish	EXCELLENT
Symmetry	EXCELLENT
Fluorescence	NONE
Inscription(s)	LABGROWN IGI LG537217305

Inscription(s) LABGROWN IGI LG537217305

Comments: This Laboratory Grown Diamond was created by Chemical Vapor Deposition (CVD) growth process and may include post-growth treatment.
Type IIa



July 21, 2022	G Report No. GS37217305	1.07 CARAT
ROUND BRILLIANT		F
6.62 - 6.66 X 4.00 MM		
Carat Weight	Clarity Grade	VS 1
Color Grade	Cut Grade	IDEAL
	Depth	60.3%
	Table	56.5%
	Grade	Medium (frosted)
Culet	Polished	EXCELLENT
Polish	Symmetry	EXCELLENT
Fluorescence	Fluorescence (reaction)	NONE
		LABGROWN (G1)
		LSG37217305
Comments:	This Laboratory Grown Diamond was grown by Chemical Vapor Deposition (CVD) growth process and may include post-growth treatment. Type Ila	

www.igi.org

THIS DOCUMENT WAS PRODUCED WITH THE FOLLOWING SECURITY MEASURES: SPECIAL DOCUMENT PAPER, INK SCREENS, WATERMARK BACKGROUND DESIGNS, HOLOGRAM AND OTHER SECURITY FEATURES NOT LISTED AND DO EXCEED DOCUMENT SECURITY INDUSTRY GUIDELINES