



LABORATORY GROWN DIAMOND REPORT

LG470149197

GRADING SCALES

COLOR GRADING SCALE	CL	NC	FT	VL	LT	
COLORLESS D-F	NEAR COLORLESS G-J	FAINT K-M	VERY LIGHT N-R	LIGHT S-Z		
CLARITY (10x) GRADING SCALE	FL	IF	VVS	VS	SI	I
FLAWLESS INTERNALLY FLAWLESS	VERY VERY SLIGHTLY INCLUDED	VERY SLIGHTLY INCLUDED	SLIGHTLY INCLUDED	INCLUDED		

The laboratory grown diamond described in this Report (Report) has been graded, tested, analyzed, examined and/or inscribed by International Gemological Institute (IGI). A laboratory grown diamond is one that has essentially the same chemical, physical and optical properties as a mined diamond, with the exception of being grown by man (a manufactured product). IGI employs and utilizes those techniques and equipment currently available to IGI, including, without limitation, 10X magnification, corrected triplet loupe, binocular microscope, master color comparison stones, non-contact-optical measuring device, Diamond Sure™, Diamond View™, Spectrophotometer and such other instruments and/or processes as deemed appropriate by IGI. This Report includes advanced security features. A duly accredited gemologist or jeweler can advise you with respect to the importance of and interrelationship between cut, color, clarity and carat weight.
THIS REPORT IS NEITHER A GUARANTEE, VALUATION, NOR APPRAISAL OF THE GEMSTONE DESCRIBED HEREIN. PLEASE REVIEW THE LIMITATIONS AND RESTRICTIONS SET FORTH ONLINE. FOR ADDITIONAL INFORMATION, IMPORTANT LIMITATIONS AND DISCLAIMERS, PLEASE GO TO WWW.IGI.ORG OR CALL 1-888-BUY-IGI.

© INTERNATIONAL GEMOLOGICAL INSTITUTE, INC.

04/22/2021

IGI Report Number **LG470149197**

Shape and Cutting Style **ROUND BRILLIANT**

Measurements **6.58 - 6.63 x 4.02 mm**

GRADING RESULTS

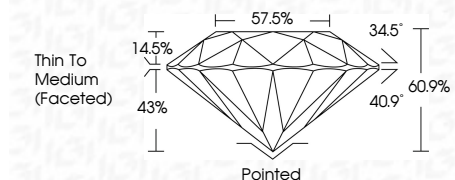
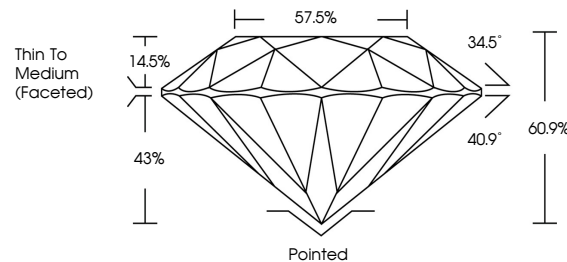
Carat Weight **1.07 CARAT**

Color Grade **H**

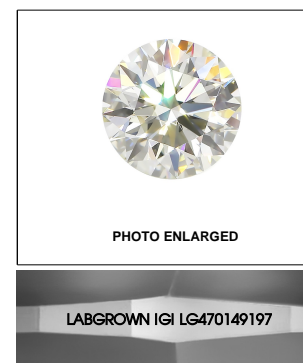
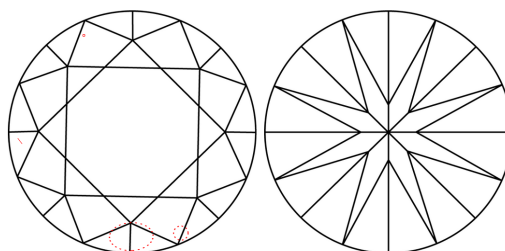
Clarity Grade **SI 1**

Cut Grade **IDEAL**

PROPORTIONS

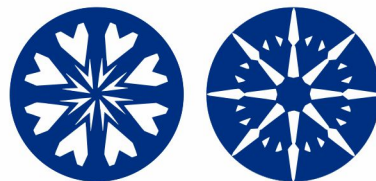


CLARITY CHARACTERISTICS



KEY TO SYMBOLS

Red symbols indicate internal characteristics.
Green symbols indicate external characteristics.



ADDITIONAL GRADING INFORMATION

Polish **EXCELLENT**

Symmetry **EXCELLENT**

Fluorescence **NONE**

Inscription(s) **LABGROWN IGI LG470149197**

Comments: HEARTS & ARROWS
Hearts and Arrows pattern viewable with H&A scope.
This Laboratory Grown Diamond was created by Chemical Vapor Deposition (CVD) growth process and may include post-growth treatment Type IIa

04/22/2021

IGI Report Number **LG470149197**

Shape and Cutting Style **ROUND BRILLIANT**

Measurements **6.58 - 6.63 x 4.02 mm**

GRADING RESULTS

Carat Weight **1.07 CARAT**

Color Grade **H**

Clarity Grade **SI 1**

Cut Grade **IDEAL**

ADDITIONAL GRADING INFORMATION

Polish **EXCELLENT**

Symmetry **EXCELLENT**

Fluorescence **NONE**

Inscription(s) **LABGROWN IGI LG470149197**

Comments: HEARTS & ARROWS
Hearts and Arrows pattern viewable with H&A scope.
This Laboratory Grown Diamond was created by Chemical Vapor Deposition (CVD) growth process and may include post-growth treatment Type IIa



IGI

IGI Report No LG470149197	1.07 CARAT	H
ROUND BRILLIANT	IDEAL	SI 1
Carat Weight	6.58 - 6.63 x 4.02 mm	60.9%
Color Grade	57.5%	Thin To Medium (Faceted)
Clarity Grade	Pointed	EXCELLENT
Cut Grade	EXCELLENT	EXCELLENT
Depth	None	LABGROWN IGI LG470149197
Table	None	
Grade	None	
Culet	None	
Polish	None	
Symmetry	None	
Fluorescence	None	
Inscription(s)	None	
Comments: HEARTS & ARROWS	None	
Hearts & Arrows pattern viewable with H&A scope.	None	
This Laboratory Grown Diamond was created by Chemical Vapor Deposition (CVD) growth process and may include post-growth treatment Type IIa	None	