

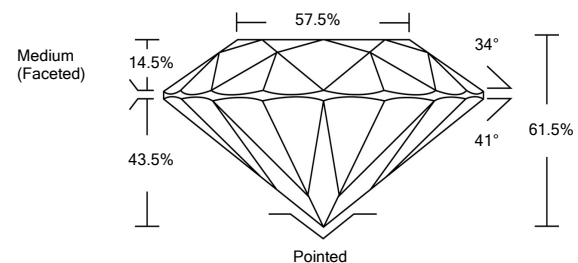


ELECTRONIC COPY

LABORATORY GROWN DIAMOND REPORT

LG517286204

PROPORTIONS



GRADING SCALES

COLOR GRADING SCALE	CL	NC	FT	VL	LT	
	COLORLESS D-F	NEAR COLORLESS G-J	FAINT K-M	VERY LIGHT N-R	LIGHT S-Z	
CLARITY (10x) GRADING SCALE	FL	IF	VVS	VS	SI	I
	FLAWLESS INTERNALLY FLAWLESS	VERY VERY SLIGHTLY INCLUDED	VERY SLIGHTLY INCLUDED	SLIGHTLY INCLUDED	INCLUDED	

February 18, 2022

IGI Report Number

LG517286204

Description

LABORATORY GROWN DIAMOND

Shape and Cutting Style

ROUND BRILLIANT

Measurements

6.46 - 6.49 X 3.98 MM

GRADING RESULTS

Carat Weight

1.02 CARAT

Color Grade

G

Clarity Grade

VVS 2

Cut Grade

IDEAL

February 18, 2022

IGI Report Number

LG517286204

Description

LABORATORY GROWN DIAMOND

Shape and Cutting Style

ROUND BRILLIANT

Measurements

6.46 - 6.49 X 3.98 MM

GRADING RESULTS

Carat Weight

1.02 CARAT

Color Grade

G

Clarity Grade

VVS 2

Cut Grade

IDEAL

ADDITIONAL GRADING INFORMATION

Polish

EXCELLENT

Symmetry

EXCELLENT

Fluorescence

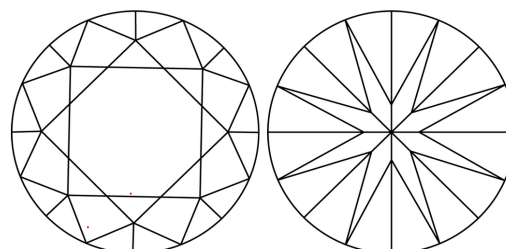
NONE

Inscription(s)

LABGROWN IGI LG517286204

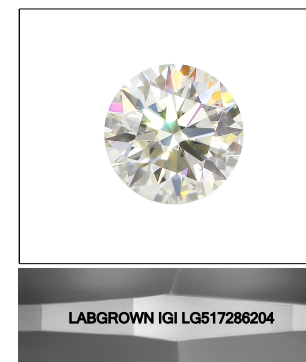
Comments: This Laboratory Grown Diamond was created by Chemical Vapor Deposition (CVD) growth process and may include post-growth treatment.
Type IIa

CLARITY CHARACTERISTICS



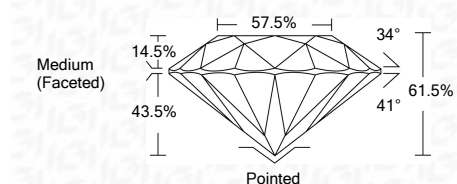
KEY TO SYMBOLS

Red symbols indicate internal characteristics.
Green symbols indicate external characteristics.



LASERSCRIBESM

Sample Image Used



ADDITIONAL GRADING INFORMATION

Polish

EXCELLENT

Symmetry

EXCELLENT

Fluorescence

NONE

Inscription(s)

LABGROWN IGI LG517286204

Comments: This Laboratory Grown Diamond was created by Chemical Vapor Deposition (CVD) growth process and may include post-growth treatment.
Type IIa



IGI

February 18, 2022	IGI Report No. LG517286204	1.02 CARAT	G	Pointed
ROUND BRILLIANT	6.46 - 6.49 X 3.98 MM	VVS 2	IDEAL	EXCELLENT
Carat Weight	6.46 - 6.49 X 3.98 MM	61.5%	57.5%	EXCELLENT
Color Grade		Medium (Faceted)		NONE
Clarity Grade				LABGROWN IGI LG517286204
Cut Grade				Inscription(s)
Depth				Comments: This Laboratory Grown Diamond was created by Chemical Vapor Deposition (CVD) growth process and may include post-growth treatment. Type IIa
Table				
Girdle				
Culet				
Polish				
Symmetry				
Fluorescence				
Inscription(s)				