



ELECTRONIC COPY

LABORATORY GROWN DIAMOND REPORT

September 14, 2022	
IGI Report Number	LG546289439
Description	LABORATORY GROWN DIAMOND
Shape and Cutting Style	ROUND BRILLIANT
Measurements	6.52 - 6.56 X 4.04 MM
GRADING RESULTS	
Carat Weight	1.07 CARAT
Color Grade	F
Clarity Grade	VS 1
Cut Grade	IDEAL

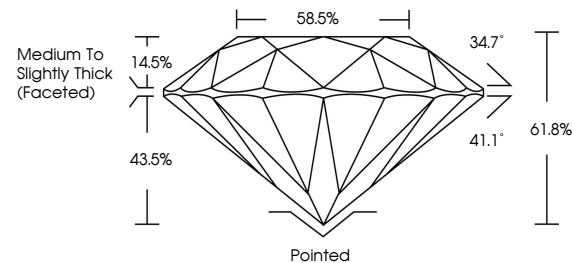
ADDITIONAL GRADING INFORMATION

Polish	EXCELLENT
Symmetry	EXCELLENT
Fluorescence	NONE
Inscription(s)	LABGROWN IGI LG546289439

Comments: This Laboratory Grown Diamond was created by Chemical Vapor Deposition (CVD) growth process and may include post-growth treatment.
Type IIa

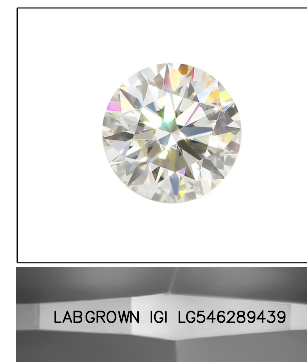
LG546289439

PROPORTIONS



GRADING SCALES

COLOR GRADING SCALE	CL		NC	FT	VLT	LT
	COLORLESS D-F		NEAR COLORLESS G-J	FAINT K-M	VERY LIGHT N-R	LIGHT S-Z
CLARITY (10x) GRADING SCALE	FL	IF	VVS	VS	SI	I
	FLAWLESS INTERNALLY FLAWLESS		VERY VERY SLIGHTLY INCLUDED	VERY SLIGHTLY INCLUDED	SLIGHTLY INCLUDED	INCLUDED

LASERSCRIBESM

Sample Image Used



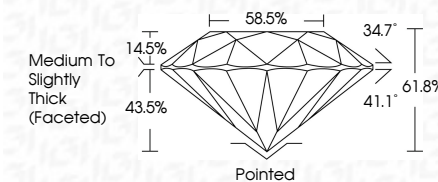
© IGI 2020, International Gemological Institute

FD - 10 20

www.igi.org

LABORATORY GROWN DIAMOND REPORT

September 14, 2022	
IGI Report Number	LG546289439
Description	LABORATORY GROWN DIAMOND
Shape and Cutting Style	ROUND BRILLIANT
Measurements	6.52 - 6.56 X 4.04 MM
GRADING RESULTS	
Carat Weight	1.07 CARAT
Color Grade	F
Clarity Grade	VS 1
Cut Grade	IDEAL



ADDITIONAL GRADING INFORMATION

Polish	EXCELLENT
Symmetry	EXCELLENT
Fluorescence	NONE
Inscription(s)	LABGROWN IGI LG546289439

Comments: This Laboratory Grown Diamond was created by Chemical Vapor Deposition (CVD) growth process and may include post-growth treatment.
Type IIa



September 14, 2022
GJ Report No | G546289439

ROUND BRILLIANT
5.52 - 6.56 X 4.04 MM

5.52 - 6.56 X 4.04 MM
Carat Weight 1.07 CARAT

Color Grade

	VS 1	IDEAL
Clarity Grade		
Cut Grade		

Depth	61.8%
Table	58.5%

Circle	Medium To Slightly Thick (Faceted)
--------	------------------------------------

Culet	Pointed	Thick (Faceted)

Polish	EXCELLENT
EXCELLENT	

	EXCELLENT	NONE
Symmetry		
Fluorescence		

Inscription(s)

Comments:
This Laboratory Grown Diamond was

created by Chemical Vapor Deposition (CVD) growth process and may include

post-growth treatment.
Type IIa