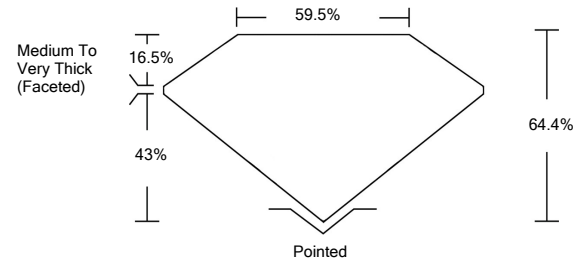




LG457064754

LABORATORY GROWN DIAMOND REPORT

PROPORTIONS



GRADING SCALES

Table with 5 columns for Color Grading Scale (CL, NC, FT, VLT, LT) and Clarity (10x) Grading Scale (FL, IF, VVS, VS, SI, I).

The laboratory grown diamond described in this Report (Report) has been graded, tested, analyzed, examined and/or inscribed by International Gemological Institute (IGI). A laboratory grown diamond is one that has essentially the same chemical, physical and optical properties as a mined diamond...

© INTERNATIONAL GEMOLOGICAL INSTITUTE, INC.

01/11/2021 IGI Report Number LG457064754

Shape and Cutting Style OVAL BRILLIANT

Measurements 7.41 x 5.62 x 3.62 mm

GRADING RESULTS

Carat Weight 1.00 CARAT

Color Grade G

Clarity Grade SI 1

ADDITIONAL GRADING INFORMATION

Polish VERY GOOD

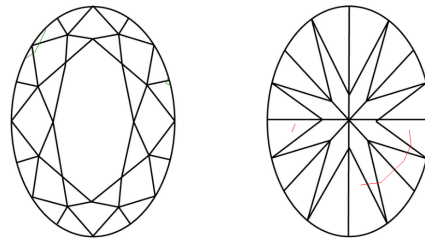
Symmetry VERY GOOD

Fluorescence NONE

Inscription(s) LABGROWN IGI LG457064754

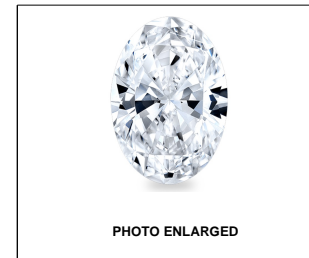
Comments: This Laboratory Grown Diamond was created by Chemical Vapor Deposition (CVD) growth process. Type IIa

CLARITY CHARACTERISTICS



KEY TO SYMBOLS

Red symbols indicate internal characteristics. Green symbols indicate external characteristics.



LABGROWN IGI LG457064754

LASERSCRIBE SM

01/11/2021

IGI Report Number LG457064754

Shape and Cutting Style OVAL BRILLIANT

Measurements 7.41 x 5.62 x 3.62 mm

GRADING RESULTS

Carat Weight 1.00 CARAT

Color Grade G

Clarity Grade SI 1

ADDITIONAL GRADING INFORMATION

Polish VERY GOOD

Symmetry VERY GOOD

Fluorescence NONE

Inscription(s) LABGROWN IGI LG457064754

Comments: This Laboratory Grown Diamond was created by Chemical Vapor Deposition (CVD) growth process. Type IIa



IGI

01/11/2021 IGI Report No. LG457064754 OVAL BRILLIANT 7.41 x 5.62 x 3.62 mm 1.00 CARAT G SI 1 64.4% 59.5% Medium To Very Thick (Faceted) Pointed VERY GOOD VERY GOOD NONE LABGROWN IGI LG457064754

This Laboratory Grown Diamond was created by Chemical Vapor Deposition (CVD) growth process. Type IIa