



ELECTRONIC COPY

LABORATORY GROWN DIAMOND REPORT

LG546289464

September 14, 2022
IGI Report Number LG546289464
Description LABORATORY GROWN DIAMOND
Shape and Cutting Style ROUND BRILLIANT
Measurements 7.96 - 7.97 X 4.92 MM

GRADING RESULTS

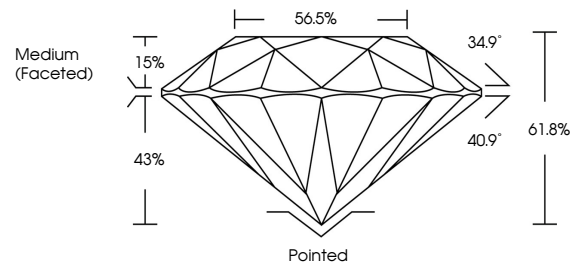
Carat Weight 1.91 CARAT
Color Grade F
Clarity Grade VS 1
Cut Grade IDEAL

ADDITIONAL GRADING INFORMATION

Polish EXCELLENT
Symmetry EXCELLENT
Fluorescence NONE
Inscription(s) LABGROWN IGI LG546289464

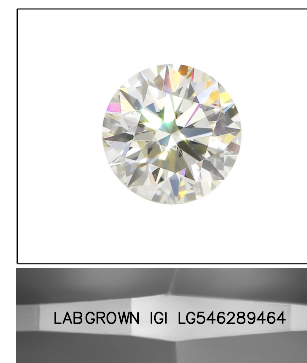
Comments: HEARTS & ARROWS
This Laboratory Grown Diamond was created by Chemical Vapor Deposition (CVD) growth process and may include post-growth treatment.
Type IIa

PROPORTIONS



GRADING SCALES

Table showing Color Grading Scale (CL to LT) and Clarity (10x) Grading Scale (FL to I).

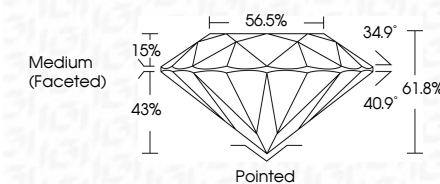


LASERSCRIBE SM Sample Image Used



www.igi.org

September 14, 2022
IGI Report Number LG546289464
Description LABORATORY GROWN DIAMOND
Shape and Cutting Style ROUND BRILLIANT
Measurements 7.96 - 7.97 X 4.92 MM
GRADING RESULTS
Carat Weight 1.91 CARAT
Color Grade F
Clarity Grade VS 1
Cut Grade IDEAL



ADDITIONAL GRADING INFORMATION

Polish EXCELLENT
Symmetry EXCELLENT
Fluorescence NONE
Inscription(s) LABGROWN IGI LG546289464

Comments: HEARTS & ARROWS
This Laboratory Grown Diamond was created by Chemical Vapor Deposition (CVD) growth process and may include post-growth treatment.
Type IIa



September 14, 2022
IGI Report No LG546289464
ROUND BRILLIANT
Carat Weight 1.91 CARAT
Color Grade F
Clarity Grade VS 1
Cut Grade IDEAL
Depth 61.8%
Table 56.5%
Grade Medium (Faceted)
Culet Pointed
Polish EXCELLENT
Symmetry EXCELLENT
Fluorescence NONE
Inscription(s) LABGROWN IGI LG546289464
Comments: HEARTS & ARROWS
This Laboratory Grown Diamond was created by Chemical Vapor Deposition (CVD) growth process and may include post-growth treatment.
Type IIa