



ELECTRONIC COPY

LABORATORY GROWN DIAMOND REPORT

August 2, 2022
 IGI Report Number **LG541254342**
 Description **LABORATORY GROWN
DIAMOND**
 Shape and Cutting Style **OVAL BRILLIANT**
 Measurements **9.48 X 6.46 X 4.08 MM**

GRADING RESULTS

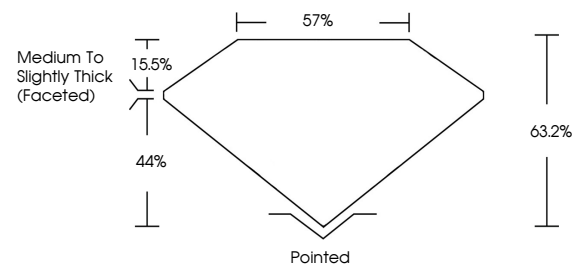
Carat Weight **1.57 CARAT**
 Color Grade **G**
 Clarity Grade **SI 1**

ADDITIONAL GRADING INFORMATION

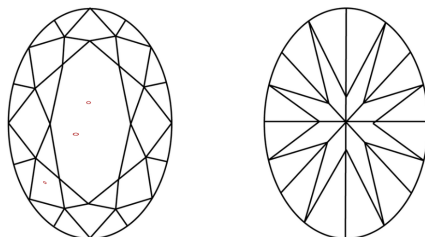
Polish **EXCELLENT**
 Symmetry **EXCELLENT**
 Fluorescence **NONE**
 Inscription(s) **LABGROWN IGI LG541254342**
 Comments: This Laboratory Grown Diamond was created by Chemical Vapor Deposition (CVD) growth process and may include post-growth treatment. Type IIa

LG541254342

PROPORTIONS



CLARITY CHARACTERISTICS



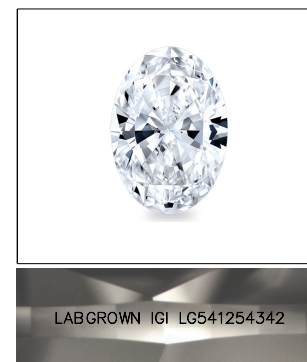
KEY TO SYMBOLS

Red symbols indicate internal characteristics.
 Green symbols indicate external characteristics.

**LABORATORY GROWN
DIAMOND REPORT**

GRADING SCALES

| COLOR GRADING SCALE | CL | NC | FT | VL | LT | |
|-----------------------------|------------------------------|-----------------------------|------------------------|-------------------|-----------|---|
| | COLORLESS D-F | NEAR COLORLESS G-J | FAINT K-M | VERY LIGHT N-R | LIGHT S-Z | |
| CLARITY (10x) GRADING SCALE | FL | IF | VVS | VS | SI | I |
| | FLAWLESS INTERNALLY FLAWLESS | VERY VERY SLIGHTLY INCLUDED | VERY SLIGHTLY INCLUDED | SLIGHTLY INCLUDED | INCLUDED | |

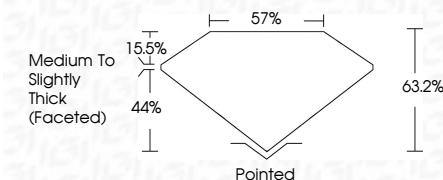


LASERSCRIBESM

Sample Image Used

LABORATORY GROWN DIAMOND REPORT

August 2, 2022
 IGI Report Number **LG541254342**
 Description **LABORATORY GROWN
DIAMOND**
 Shape and Cutting Style **OVAL BRILLIANT**
 Measurements **9.48 X 6.46 X 4.08 MM**
GRADING RESULTS
 Carat Weight **1.57 CARAT**
 Color Grade **G**
 Clarity Grade **SI 1**



ADDITIONAL GRADING INFORMATION

Polish **EXCELLENT**
 Symmetry **EXCELLENT**
 Fluorescence **NONE**
 Inscription(s) **LABGROWN IGI LG541254342**
 Comments: This Laboratory Grown Diamond was created by Chemical Vapor Deposition (CVD) growth process and may include post-growth treatment. Type IIa



IGI

| | | | | | |
|----------------|---------------------------|------------|---|------|---|
| August 2, 2022 | IGI Report No LG541254342 | 1.57 CARAT | G | SI 1 | Pointed |
| OVAL BRILLIANT | 9.48 X 6.46 X 4.08 MM | 1.57 CARAT | G | SI 1 | EXCELLENT |
| Carat Weight | 9.48 X 6.46 X 4.08 MM | 1.57 CARAT | G | SI 1 | EXCELLENT |
| Color Grade | | 1.57 CARAT | G | SI 1 | NONE |
| Clarity Grade | | 1.57 CARAT | G | SI 1 | LABGROWN IGI LG541254342 |
| Depth | | 1.57 CARAT | G | SI 1 | Comments: |
| Table | | 1.57 CARAT | G | SI 1 | This Laboratory Grown Diamond was created by Chemical Vapor Deposition (CVD) growth process and may include post-growth treatment. Type IIa |
| Grade | | 1.57 CARAT | G | SI 1 | |
| Culet | | 1.57 CARAT | G | SI 1 | |
| Polish | | 1.57 CARAT | G | SI 1 | |
| Symmetry | | 1.57 CARAT | G | SI 1 | |
| Fluorescence | | 1.57 CARAT | G | SI 1 | |
| Inscription(s) | | 1.57 CARAT | G | SI 1 | |
| Comments: | | 1.57 CARAT | G | SI 1 | |

