



ELECTRONIC COPY

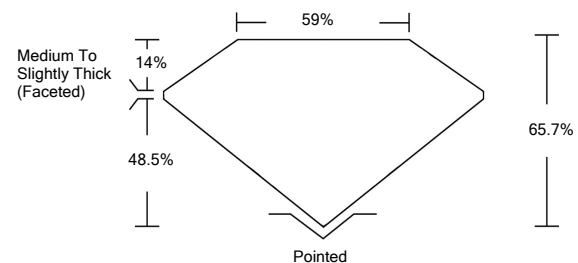
LABORATORY GROWN DIAMOND REPORT

March 14, 2022	
IGI Report Number	LG520283442
Description	LABORATORY GROWN DIAMOND
Shape and Cutting Style	SQUARE CUSHION BRILLIANT
Measurements	6.34 X 6.32 X 4.15 MM
GRADING RESULTS	
Carat Weight	1.22 CARAT
Color Grade	D
Clarity Grade	VS 1
ADDITIONAL GRADING INFORMATION	
Polish	EXCELLENT
Symmetry	EXCELLENT
Fluorescence	NONE
Inscription(s)	LABGROWN IGI LG520283442

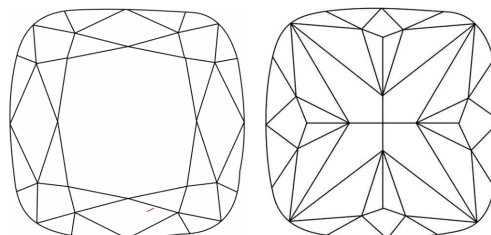
Comments: As Grown - No indication of post-growth treatment.
This Laboratory Grown Diamond was created by High Pressure High Temperature (HPHT) growth process. Type II

LG520283442

PROPORTIONS



CLARITY CHARACTERISTICS

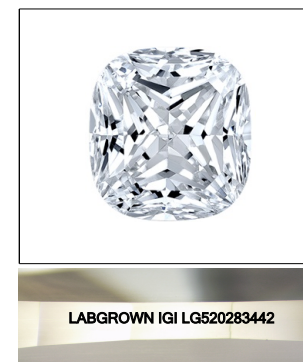


KEY TO SYMBOLS

Red symbols indicate internal characteristics.
Green symbols indicate external characteristics.

GRADING SCALES

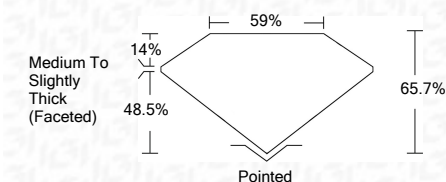
COLOR GRADING SCALE	CL	NC	FT	VLT	LT	
	COLORLESS D-F	NEAR COLORLESS G-J	FAINT K-M	VERY LIGHT N-R	LIGHT S-Z	
CLARITY (10x) GRADING SCALE	FL	IF	VVS	VS	SI	I
	FLAWLESS INTERNALLY FLAWLESS	VERY VERY SLIGHTLY INCLUDED	VERY SLIGHTLY INCLUDED	SLIGHTLY INCLUDED	INCLUDED	



LASERSCRIBESM

Sample Image Used

March 14, 2022	
IGI Report Number	LG520283442
Description	LABORATORY GROWN DIAMOND
Shape and Cutting Style	SQUARE CUSHION BRILLIANT
Measurements	6.34 X 6.32 X 4.15 MM
GRADING RESULTS	
Carat Weight	1.22 CARAT
Color Grade	D
Clarity Grade	VS 1



ADDITIONAL GRADING INFORMATION	
Polish	EXCELLENT
Symmetry	EXCELLENT
Fluorescence	NONE
Inscription(s)	LABGROWN IGI LG520283442

Comments: As Grown - No indication of post-growth treatment.
This Laboratory Grown Diamond was created by High Pressure High Temperature (HPHT) growth process. Type II



IGI

March 14, 2022	IGI Report No. LG520283442
	SQUARE CUSHION BRILLIANT
	6.34 X 6.32 X 4.15 MM
	Carat Weight 1.22 CARAT
	Color Grade D
	Clarity Grade VS 1
	Depth 65.7%
	Table 59%
	Girdle Medium To Slightly Thick (Faceted)
	Culet Pointed
	Polish EXCELLENT
	Symmetry EXCELLENT
	Fluorescence NONE
	Inscription(s) LABGROWN IGI LG520283442
	Comments: As Grown - No indication of post-growth treatment. This Laboratory Grown Diamond was created by High Pressure High Temperature (HPHT) growth process. Type II

