



ELECTRONIC COPY

LABORATORY GROWN DIAMOND REPORT

May 23, 2022	
IGI Report Number	LG524237348
Description	LABORATORY GROWN DIAMOND
Shape and Cutting Style	ROUND BRILLIANT
Measurements	8.08 - 8.09 X 4.96 MM

GRADING RESULTS

Carat Weight	2.00 CARATS
Color Grade	F
Clarity Grade	VS 1
Cut Grade	IDEAL

ADDITIONAL GRADING INFORMATION

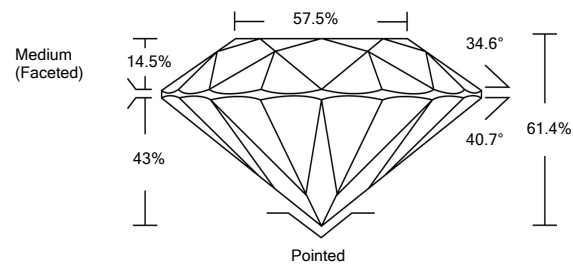
Polish	EXCELLENT
Symmetry	EXCELLENT
Fluorescence	NONE

Inscription(s) **LABGROWN IGI LG524237348**

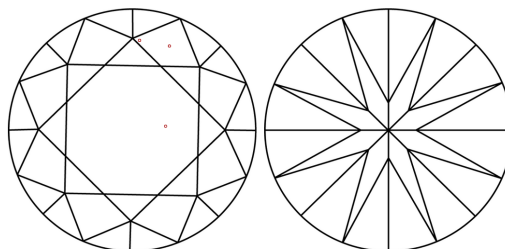
Comments: This Laboratory Grown Diamond was created by Chemical Vapor Deposition (CVD) growth process and may include post-growth treatment.

LG524237348

PROPORTIONS



CLARITY CHARACTERISTICS



KEY TO SYMBOLS

Red symbols indicate internal characteristics.
Green symbols indicate external characteristics.

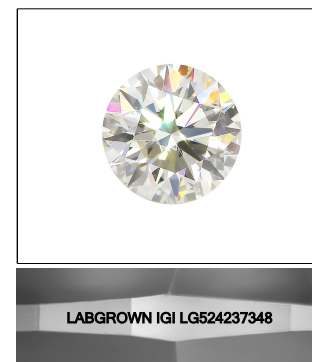
GRADING SCALES

COLOR GRADING SCALE	CL		NC	FT	VLT	LT
	COLORLESS D-F	NEAR COLORLESS G-J		FAINT K-M	VERY LIGHT N-R	LIGHT S-Z
CLARITY (10x) GRADING SCALE	FL	IF	VVS	VS	SI	I
	FLAWLESS INTERNALLY FLAWLESS		VERY VERY SLIGHTLY INCLUDED	VERY SLIGHTLY INCLUDED	SLIGHTLY INCLUDED	INCLUDE

The laboratory growth diamond described in this Report (Report) has been graded, tested, analyzed, examined and/or inscribed by International Gemological Institute (I.G.I.). A laboratory grown diamond is one that has essentially the same chemical, physical and optical properties as a mined diamond, with the exception of being grown by man-made means and/or inscribed with the I.G.I. Laboratory Grown Diamond Identification triplet loupe, binocular microscope, master color comparison stones, non-contact-optical device, and/or other instruments and/or processes, without limitation, 10X magnification, corrected triplet loupe, binocular microscope, master color comparison stones, non-contact-optical device, and/or other instruments and/or processes as deemed appropriate by I.G.I. This Report includes advanced security features. A duly accredited gemologist or jeweler can advise you with respect to the importance of and interrelationship between cut, color, clarity and carat weight.

THIS REPORT IS NEITHER A GUARANTEE, VALUATION, NOR APPRAISAL OF THE GEMSTONE DESCRIBED HEREIN. PLEASE REVIEW THE LIMITATIONS AND RESTRICTIONS SET FORTH ONLINE. FOR MORE INFORMATION, VISIT WWW.IGI.ORG OR CALL 1-888-BUY-IGI.

© INTERNATIONAL GEMOLOGICAL INSTITUTE, INC.

LASERSCRIBESM

Sample Image Used



© IGI 2020, International Gemological Institute

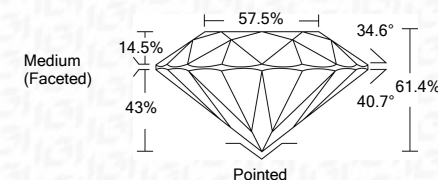
FD - 10 20

LABORATORY GROWN DIAMOND REPORT

May 23, 2022	
IGI Report Number	LG524237348
Description	LABORATORY GROWN DIAMOND
Shape and Cutting Style	ROUND BRILLIANT
Measurements	8.08 - 8.09 X 4.96 MM

GRADING RESULTS

Carat Weight	2.00 CARATS
Color Grade	F
Clarity Grade	VS 1
Cut Grade	IDEAL



ADDITIONAL GRADING INFORMATION

Polish	EXCELLENT
Symmetry	EXCELLENT
Fluorescence	NONE
Inscription(s)	LABGROWN IGI LG524237348

Inscription(s) **LABGROWN IGI LG524237348**

Comments: This Laboratory Grown Diamond was created by Chemical Vapor Deposition (CVD) growth process and may include post-growth treatment.

[illegible]

This Laboratory Grown Diamond was created by Chemical Vapor Deposition (CVD) growth process and may include post-growth