



ELECTRONIC COPY

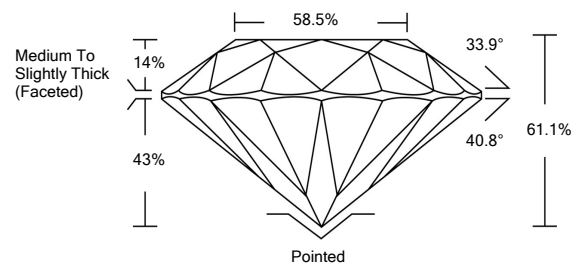
LG524239826

LABORATORY GROWN DIAMOND REPORT

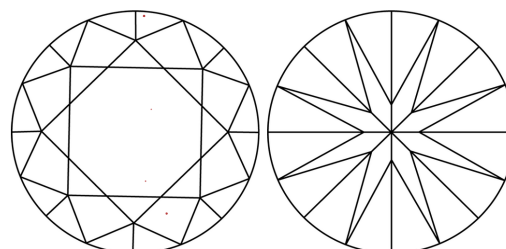
GRADING SCALES

| | | | | | | |
|-----------------------------|------------------------------|-----------------------------|------------------------|-------------------|-----------|---|
| COLOR GRADING SCALE | CL | NC | FT | VL | LT | |
| | COLORLESS D-F | NEAR COLORLESS G-J | FAINT K-M | VERY LIGHT N-R | LIGHT S-Z | |
| CLARITY (10x) GRADING SCALE | FL | IF | VVS | VS | SI | I |
| | FLAWLESS INTERNALLY FLAWLESS | VERY VERY SLIGHTLY INCLUDED | VERY SLIGHTLY INCLUDED | SLIGHTLY INCLUDED | INCLUDED | |

PROPORTIONS

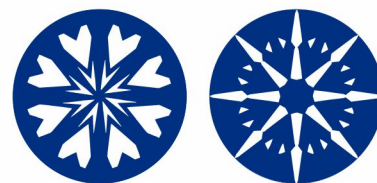


CLARITY CHARACTERISTICS



KEY TO SYMBOLS

Red symbols indicate internal characteristics.
Green symbols indicate external characteristics.



www.igi.org

April 12, 2022

IGI Report Number

LG524239826

Description

**LABORATORY GROWN
DIAMOND**

Shape and Cutting Style

ROUND BRILLIANT

Measurements

8.06 - 8.10 X 4.94 MM

GRADING RESULTS

Carat Weight

2.00 CARATS

Color Grade

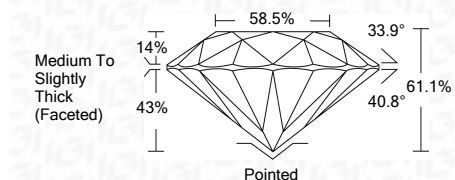
G

Clarity Grade

VS 1

Cut Grade

IDEAL



ADDITIONAL GRADING INFORMATION

Polish

EXCELLENT

Symmetry

EXCELLENT

Fluorescence

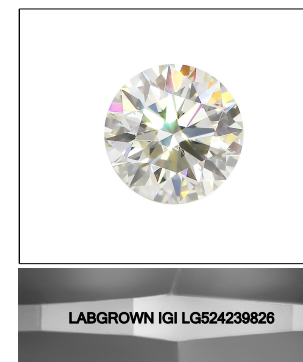
NONE

Inscription(s)

LABGROWN IGI LG524239826

Comments: HEARTS & ARROWS

This Laboratory Grown Diamond was created by Chemical Vapor Deposition (CVD) growth process and may include post-growth treatment.
Type IIa



LASERSCRIBESM

Sample Image Used



IGI

| | | | | | | | | | | | | |
|----------------------------|-----------------------|---|------|-------|-------|-------|------------------------------------|---------|-----------|-----------|------|--------------------------|
| IGI Report No. LG524239826 | 2.00 CARATS | G | VS 1 | IDEAL | 61.1% | 58.5% | Medium To Slightly Thick (Faceted) | Pointed | EXCELLENT | EXCELLENT | NONE | LABGROWN IGI LG524239826 |
| ROUND BRILLIANT | 8.06 - 8.10 X 4.94 MM | | | | | | | | | | | |
| Carat Weight | | | | | | | | | | | | |
| Color Grade | | | | | | | | | | | | |
| Clarity Grade | | | | | | | | | | | | |
| Cut Grade | | | | | | | | | | | | |
| Depth | | | | | | | | | | | | |
| Table | | | | | | | | | | | | |
| Girdle | | | | | | | | | | | | |
| Culet | | | | | | | | | | | | |
| Polish | | | | | | | | | | | | |
| Symmetry | | | | | | | | | | | | |
| Fluorescence | | | | | | | | | | | | |
| Inscription(s) | | | | | | | | | | | | |

HEARTS & ARROWS
This Laboratory Grown Diamond was created by Chemical Vapor Deposition (CVD) growth process and may include post-growth treatment.
Type IIa