



**ELECTRONIC COPY**

## LABORATORY GROWN DIAMOND REPORT

|                         |                             |
|-------------------------|-----------------------------|
| June 7, 2022            |                             |
| IGI Report Number       | LG528216823                 |
| Description             | LABORATORY GROWN<br>DIAMOND |
| Shape and Cutting Style | ROUND BRILLIANT             |
| Measurements            | 7.16 - 7.20 X 4.36 MM       |

## GRADING RESULTS

|               |            |
|---------------|------------|
| Carat Weight  | 1.35 CARAT |
| Color Grade   | E          |
| Clarity Grade | VS 1       |
| Cut Grade     | IDEAL      |

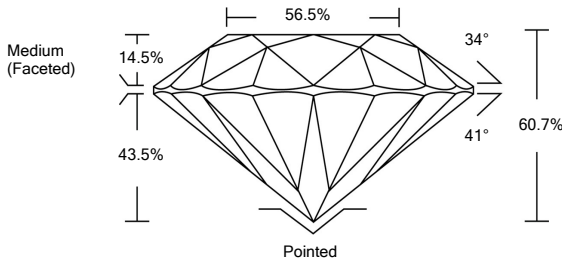
### ADDITIONAL GRADING INFORMATION

|              |           |
|--------------|-----------|
| Polish       | EXCELLENT |
| Symmetry     | EXCELLENT |
| Fluorescence | NONE      |

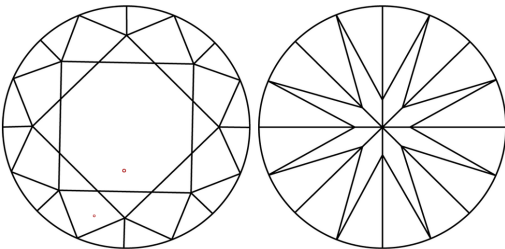
Inscription(s) **LABGROWN IGI LG528216823**  
 Comments: This Laboratory Grown Diamond was created by Chemical Vapor Deposition (CVD) growth process and may include post-growth treatment.  
 Type IIa

LG528216823

## PROPORTIONS



## CLARITY CHARACTERISTICS

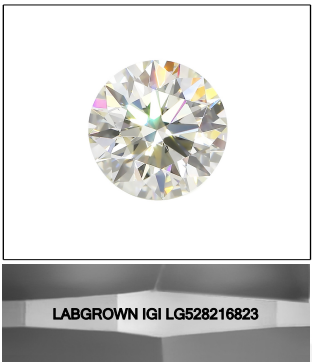


## KEY TO SYMBOLS

Red symbols indicate internal characteristics.  
Green symbols indicate external characteristics.

## GRADING SCALES

|                             |                              |  |                             |  |                        |  |                   |  |           |  |
|-----------------------------|------------------------------|--|-----------------------------|--|------------------------|--|-------------------|--|-----------|--|
| COLOR GRADING SCALE         | CL                           |  | NC                          |  | FT                     |  | VLT               |  | LT        |  |
|                             | COLORLESS D-F                |  | NEAR COLORLESS G-J          |  | FAINT K-M              |  | VERY LIGHT N-R    |  | LIGHT S-Z |  |
| CLARITY (10x) GRADING SCALE | FL IF                        |  | VVS                         |  | VS                     |  | SI                |  | I         |  |
|                             | FLAWLESS INTERNALLY FLAWLESS |  | VERY VERY SLIGHTLY INCLUDED |  | VERY SLIGHTLY INCLUDED |  | SLIGHTLY INCLUDED |  | INCLUDED  |  |

**LASERSCRIBE<sup>SM</sup>**

### Sample Image Used



© IGI 2020, International Gemological Institute

FD - 10 20

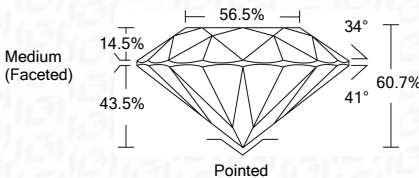
**www.igi.org**

LABORATORY GROWN DIAMOND REPORT

|                         |                             |
|-------------------------|-----------------------------|
| June 7, 2022            |                             |
| IGI Report Number       | LG528216823                 |
| Description             | LABORATORY GROWN<br>DIAMOND |
| Shape and Cutting Style | ROUND BRILLIANT             |
| Measurements            | 7.16 - 7.20 X 4.36 MM       |

## GRADING RESULTS

|               |            |
|---------------|------------|
| Carat Weight  | 1.35 CARAT |
| Color Grade   | E          |
| Clarity Grade | VS 1       |
| Cut Grade     | IDEAL      |



### ADDITIONAL GRADING INFORMATION

|                |                          |
|----------------|--------------------------|
| Polish         | EXCELLENT                |
| Symmetry       | EXCELLENT                |
| Fluorescence   | NONE                     |
| Inscription(s) | LABGROWN IGI LG528216823 |

Comments: This Laboratory Grown Diamond was created by Chemical Vapor Deposition (CVD) growth process and may include post-growth treatment.  
Type IIa



IGI

|                                 |  |
|---------------------------------|--|
| June 7, 2022                    |  |
| IGI Report No. LG629218823      |  |
| ROUND BRILLIANT                 |  |
| Weight<br>1.16 - 7.20 x 4.38 mm | 1.35 CARAT   |
| Color Grade                     | E  |
| Clarity Grade                   | VS 1   |
| Cut Grade                       | IDEAL  |
| Depth                           | 80.7%  |
| Table                           | 59.5%  |
| Girdle                          | Medium (Feetted)   |
| Culet                           | Pointed  |
| Polish                          | EXCELLENT  |
| Symmetry                        | EXCELLENT  |
| Fluorescence                    | NONE   |
| Inscription(s)                  | LABGROWN IGI<br>LG629218823  |
| Comments:                       |  |
| Type Ia                         | This Laboratory Grown Diamond was created by Chemical Vapor Deposition (CVD) growth process and may require post-growth treatment. |