

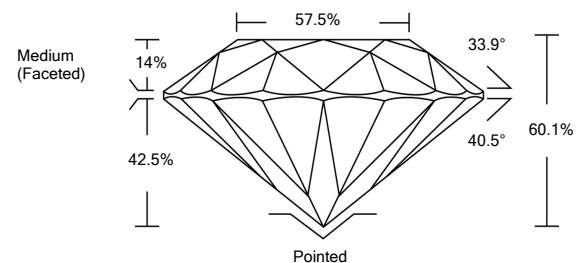


ELECTRONIC COPY

LABORATORY GROWN DIAMOND REPORT

LG519267006

PROPORTIONS



GRADING SCALES

COLOR GRADING SCALE	CL	NC	FT	VL	LT	
	COLORLESS D-F	NEAR COLORLESS G-J	FAINT K-M	VERY LIGHT N-R	LIGHT S-Z	
CLARITY (10x) GRADING SCALE	FL	IF	VVS	VS	SI	I
	FLAWLESS INTERNALLY FLAWLESS	VERY VERY SLIGHTLY INCLUDED	VERY SLIGHTLY INCLUDED	SLIGHTLY INCLUDED	INCLUDED	

March 9, 2022

IGI Report Number

LG519267006

Description

LABORATORY GROWN DIAMOND

Shape and Cutting Style

ROUND BRILLIANT

Measurements

6.61 - 6.64 X 3.98 MM

GRADING RESULTS

Carat Weight

1.06 CARAT

Color Grade

G

Clarity Grade

VS 1

Cut Grade

IDEAL

March 9, 2022

IGI Report Number

LG519267006

Description

LABORATORY GROWN DIAMOND

Shape and Cutting Style

ROUND BRILLIANT

Measurements

6.61 - 6.64 X 3.98 MM

GRADING RESULTS

Carat Weight

1.06 CARAT

Color Grade

G

Clarity Grade

VS 1

Cut Grade

IDEAL

ADDITIONAL GRADING INFORMATION

Polish

EXCELLENT

Symmetry

EXCELLENT

Fluorescence

NONE

Inscription(s)

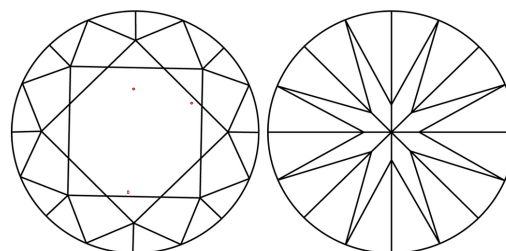
LABGROWN IGI LG519267006

Comments: HEARTS & ARROWS

This Laboratory Grown Diamond was created by Chemical Vapor Deposition (CVD) growth process and may include post-growth treatment.

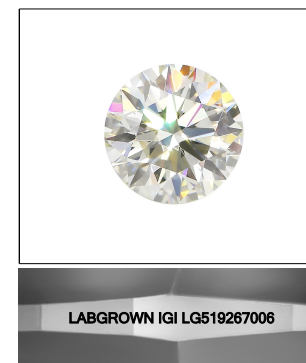
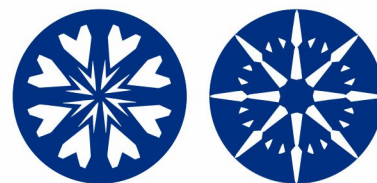
Type IIa

CLARITY CHARACTERISTICS



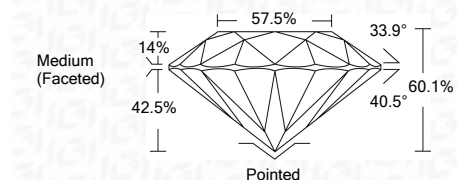
KEY TO SYMBOLS

Red symbols indicate internal characteristics.
Green symbols indicate external characteristics.



LASERSCRIBESM

Sample Image Used



ADDITIONAL GRADING INFORMATION

Polish

EXCELLENT

Symmetry

EXCELLENT

Fluorescence

NONE

Inscription(s)

LABGROWN IGI LG519267006

Comments: HEARTS & ARROWS

This Laboratory Grown Diamond was created by Chemical Vapor Deposition (CVD) growth process and may include post-growth treatment.

Type IIa



IGI



IGI Report No. LG519267006	1.06 CARAT	G	VS 1	IDEAL	60.1%	57.5%	Medium (Faceted)	Pointed	EXCELLENT	EXCELLENT	NONE	LABGROWN IGI LG519267006
ROUND BRILLIANT	6.61 - 6.64 X 3.98 MM											
Carat Weight												
Color Grade												
Clarity Grade												
Cut Grade												
Table												
Depth												
Width												
Length												
Culet												
Polish												
Symmetry												
Fluorescence												
Inscription(s)												

HEARTS & ARROWS
This Laboratory Grown Diamond was created by Chemical Vapor Deposition (CVD) growth process and may include post-growth treatment.
Type IIa