

**ELECTRONIC COPY**

## LABORATORY GROWN DIAMOND REPORT

|                         |                             |
|-------------------------|-----------------------------|
| August 4, 2022          |                             |
| IGI Report Number       | LG538262013                 |
| Description             | LABORATORY GROWN<br>DIAMOND |
| Shape and Cutting Style | ROUND BRILLIANT             |
| Measurements            | 5.67 - 5.71 X 3.56 MM       |

## GRADING RESULTS

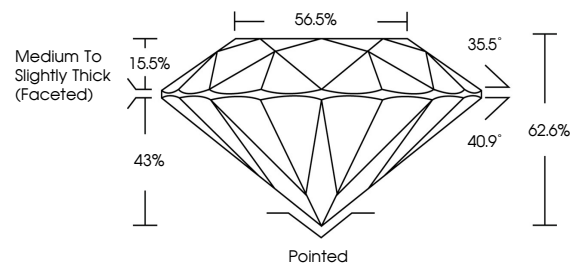
|               |            |
|---------------|------------|
| Carat Weight  | 0.71 CARAT |
| Color Grade   | G          |
| Clarity Grade | VS 1       |
| Cut Grade     | EXCELLENT  |

### ADDITIONAL GRADING INFORMATION

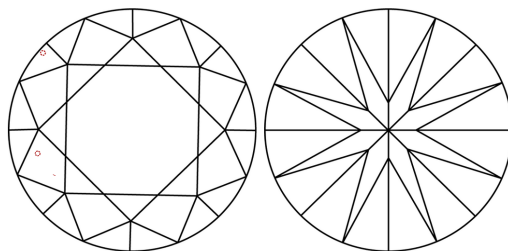
|                |   |
|----------------|---|
| Polish         | EXCELLENT   |
| Symmetry       | EXCELLENT   |
| Fluorescence   | NONE  |
| Inscription(s) | GROWN IN THE USA<br>Pat.6,858,078 IGI LG538262013 |

Comments:  
As Grown - No indication of post-growth treatment.  
This Laboratory Grown Diamond was created by  
Chemical Vapor Deposition (CVD) process.

## PROPORTIONS



## CLARITY CHARACTERISTICS



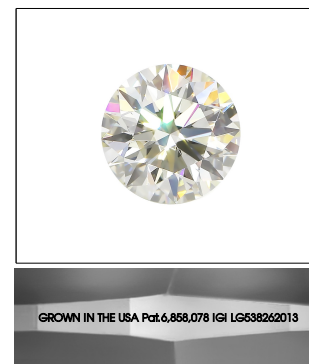
## KEY TO SYMBOLS

Red symbols indicate internal characteristics.  
Green symbols indicate external characteristics.

LABORATORY GROWN  
DIAMOND REPORT

## GRADING SCALES

| CLARITY                |                                |                           |                      |                  |   |   |       |            |       |
|------------------------|--------------------------------|---------------------------|----------------------|------------------|---|---|-------|------------|-------|
| IF                     | VVS <sup>1-2</sup>             | VS <sup>1-2</sup>         | SI <sup>1-2</sup>    | I <sup>1-3</sup> |   |   |       |            |       |
| Internally<br>Flawless | Very Very<br>Slightly Included | Very<br>Slightly Included | Slightly<br>Included | Included         |   |   |       |            |       |
| COLOR                  |                                |                           |                      |                  |   |   |       |            |       |
| D                      | E                              | F                         | G                    | H                | I | J | Faint | Very Light | Light |

LASERSCRIBE<sup>SM</sup>

Sample Image Used

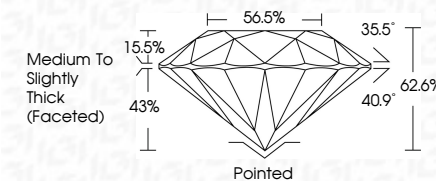


© IGI 2020, International Gemological Institute

FD - 10 20

## LABORATORY GROWN DIAMOND REPORT

|                         |                             |
|-------------------------|-----------------------------|
| August 4, 2022          |                             |
| IGI Report Number       | LG538262013                 |
| Description             | LABORATORY GROWN<br>DIAMOND |
| Shape and Cutting Style | ROUND BRILLIANT             |
| Measurements            | 5.67 - 5.71 X 3.56 MM       |
| <b>GRADING RESULTS</b>  |                             |
| Carat Weight            | 0.71 CARAT                  |
| Color Grade             | G                           |
| Clarity Grade           | VS 1                        |
| Cut Grade               | EXCELLENT                   |



### ADDITIONAL GRADING INFORMATION

|                |   |
|----------------|---|
| Polish         | EXCELLENT   |
| Symmetry       | EXCELLENT   |
| Fluorescence   | NONE  |
| Inscription(s) | GROWN IN THE USA Pat.6,858,078<br>IGI LG538262013 |

Comments:  
As Grown - No indication of post-growth treatment.  
This Laboratory Grown Diamond was created by  
Chemical Vapor Deposition (CVD) process.

