



September 16, 2021	
IGI Report Number	LG494163321
Description	LABORATORY GROWN DIAMOND
Shape and Cutting Style	SQUARE CUSHION BRILLIANT
Measurements	6.87 X 6.57 X 4.30 MM

Carat Weight	1.52 CARAT
Color Grade	E
Clarity Grade	VS 1

Polish	EXCELLENT
Symmetry	VERY GOOD
Fluorescence	NONE
Inscription(s)	LABGROWN IGI LG494163321

Comments: This Laboratory Grown Diamond was created by Chemical Vapor Deposition (CVD) growth process and may include post-growth treatment.
Type IIa

LG494163321

Diagram of a diamond-shaped cross-section with dimensions:

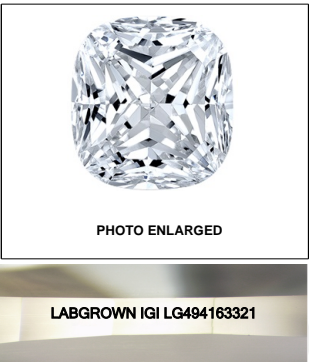
- Top width: 56.5%
- Right height: 65.4%
- Left height: 46.5%
- Left top offset: 15%
- Left side description: Medium To Slightly Thick (Faceted)
- Bottom description: Pointed

Red symbols indicate internal characteristics.
Green symbols indicate external characteristics.

COLOR GRADING SCALE	CL	NC	FT	VLT	LT	
	COLORLESS D-F	NEAR COLORLESS G-J	FAINT K-M	VERY LIGHT N-R	LIGHT S-Z	
CLARITY (10x) GRADING SCALE	FL	IF	VVS	VS	SI	I
	FLAWLESS INTERNALLY FLAWLESS	VERY VERY SLIGHTLY INCLUDED	VERY SLIGHTLY INCLUDED	SLIGHTLY INCLUDED	INCLUDED	

The laboratory grown diamond described in this Report (Report) has been graded, tested, analyzed, examined and/or inscribed by International Gemological Institute (IGI). A laboratory grown diamond is one that has essentially the same chemical, physical and optical properties as a natural diamond. IGI is a company owned and operated by a man (a manufactured product). IGI employs and utilizes those techniques and equipment currently available to IGI, including, without limitation, 10X magnification, corrected microscope, binocular microscope, master tool comparison, non-destructive testing, measuring diamond and/or view and/or color and/or clarity and/or such other instruments and/or processes as deemed appropriate by IGI. This Report includes advised security features. A duly accredited gemologist or jeweler can advise you with relevance the importance of and interrelationship between cut, color, clarity and carat weight.

THIS REPORT IS NEITHER A GUARANTEE, VALUATION, NOR APPRAISAL OF THE GEMSTONE DESCRIBED HEREIN. PLEASE REVIEW THE LIMITATIONS AND RESTRICTIONS SET FORTH ONLINE. FOR THE FULL DISCLOSURE OF THE LIMITATIONS AND DISCLAIMERS, PLEASE GO TO WWW.IGI.ORG OR CALL 1-888-BUY-IGI.

**LASERSCRIBESM**

© IGI 2020, International Gemological Institute

FD - 10 20

September 16, 2021	
IGI Report Number	LG494163321
Description	LABORATORY GROWN DIAMOND
Shape and Cutting Style	SQUARE CUSHION BRILLIANT
Measurements	6.87 X 6.57 X 4.30 MM
GRADING RESULTS	
Carat Weight	1.52 CARAT
Color Grade	E
Clarity Grade	VS 1

Polish	EXCELLENT
Symmetry	VERY GOOD
Fluorescence	NONE
Inscription(s)	LABGROWN IGI LG494163321

Comments: This Laboratory Grown Diamond was created by Chemical Vapor Deposition (CVD) growth process and may include post-growth treatment.
Type IIa



IGI Report No. LG494 183321	SQUARE CUSHION BRILLIANT	1.52 CAVAT
Carat Weight	0.67 X 0.57 X 4.30 MM	E
Color Grade		VS 1
Clarity Grade		65.4%
Depth		66.5%
Table		
Girdle	Medium To Slightly Thick (Faceted)	
Culet	Pointed	
Polish	EXCELLENT	
Symmetry	VERY GOOD	
Fluorescence	NONE	
Inscriptions (if any)	LABGROWN IGI LG494 183321	
Comments:	This Laboratory Growth Diamond was created by Chemical Vapor Deposition (CVD) growth process and may include natural inclusions and/or natural growth treatment.	
	Typical	

This Laboratory Grown Diamond was created by Chemical Vapor Deposition (CVD) growth process and may include post-growth treatment.