



**ELECTRONIC COPY**

## LABORATORY GROWN DIAMOND REPORT

March 14, 2022	
IGI Report Number	LG517208507
Description	LABORATORY GROWN DIAMOND
Shape and Cutting Style	SQUARE CUSHION BRILLIANT
Measurements	7.27 X 7.20 X 4.43 MM

## GRADING RESULTS

Carat Weight	1.59 CARAT
Color Grade	F
Clarity Grade	VS 1

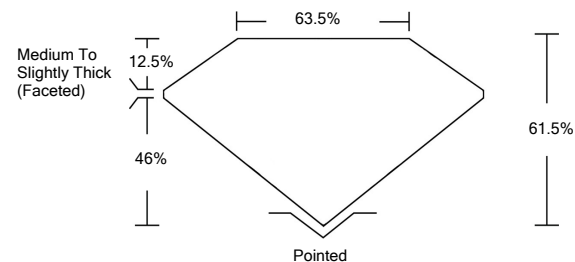
### ADDITIONAL GRADING INFORMATION

Polish	EXCELLENT
Symmetry	EXCELLENT
Fluorescence	NONE
Inscription(s)	LABGROWN IGI LG517208507

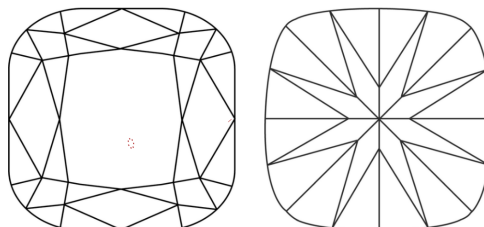
Comments: This Laboratory Grown Diamond was created by Chemical Vapor Deposition (CVD) growth process and may include post-growth treatment.  
Type IIa

LG517208507

## PROPORTIONS



## CLARITY CHARACTERISTICS



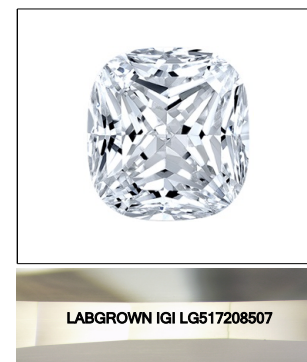
## KEY TO SYMBOLS

Red symbols indicate internal characteristics.  
Green symbols indicate external characteristics.

LABORATORY GROWN  
DIAMOND REPORT

## GRADING SCALES

COLOR GRADING SCALE	CL		NC		FT		VLT		LT	
	COLORLESS D-F		NEAR COLORLESS G-J		FAINT K-M		VERY LIGHT N-R		LIGHT S-Z	
CLARITY (10x) GRADING SCALE	FL IF		VVS		VS		SI		I	
	FLAWLESS INTERNALLY FLAWLESS		VERY VERY SLIGHTLY INCLUDED		VERY SLIGHTLY INCLUDED		SLIGHTLY INCLUDED		INCLUDED	

LASERSCRIBE<sup>SM</sup>

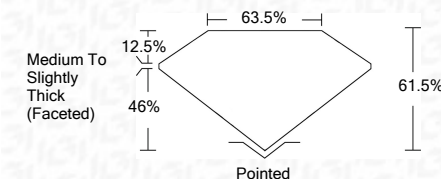
Sample Image Used



March 14, 2022	
IGI Report Number	LG517208507
Description	LABORATORY GROWN DIAMOND
Shape and Cutting Style	SQUARE CUSHION BRILLIANT
Measurements	7.27 X 7.20 X 4.43 MM

## GRADING RESULTS

Carat Weight	1.59 CARAT
Color Grade	F
Clarity Grade	VS 1



### ADDITIONAL GRADING INFORMATION

Polish	EXCELLENT
Symmetry	EXCELLENT
Fluorescence	NONE
Inscription(s)	LABGROWN IGI LG517208507

Comments: This Laboratory Grown Diamond was created by Chemical Vapor Deposition (CVD) growth process and may include post-growth treatment.

[illegible]