



**ELECTRONIC COPY**

# LABORATORY GROWN DIAMOND REPORT

LABORATORY GROWN DIAMOND REPORT

## LABORATORY GROWN DIAMOND REPORT

September 13, 2021	
IGI Report Number	LG492128947
Description	LABORATORY GROWN DIAMOND
Shape and Cutting Style	PEAR BRILLIANT
Measurements	10.58 X 6.58 X 4.22 MM

## GRADING RESULTS

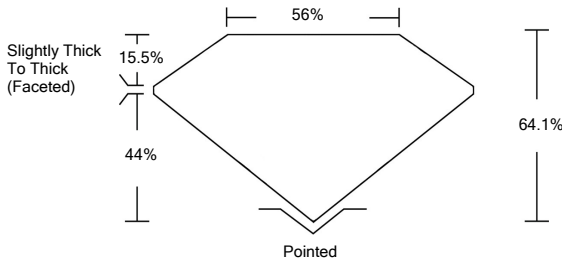
Carat Weight	1.70 CARAT
Color Grade	F
Clarity Grade	VS 1

### ADDITIONAL GRADING INFORMATION

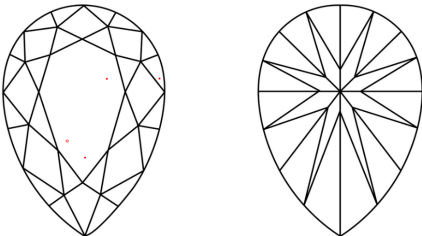
Polish	EXCELLENT
Symmetry	EXCELLENT
Fluorescence	NONE
Inscription(s)	LABGROWN IGI LG492128947

Comments: This Laboratory Grown Diamond was created by Chemical Vapor Deposition (CVD) growth process and may include post-growth treatment.  
Type IIa

## PROPORTIONS



## CLARITY CHARACTERISTICS



## KEY TO SYMBOLS

Red symbols indicate internal characteristics.  
Green symbols indicate external characteristics.

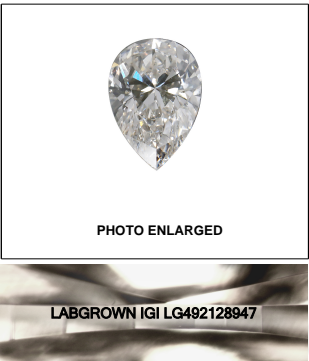
## GRADING SCALES

COLOR GRADING SCALE	CL	NC	FT	VLT	LT	
	COLORLESS D-F	NEAR COLORLESS G-J	FAINT K-M	VERY LIGHT N-R	LIGHT S-Z	
CLARITY (10x) GRADING SCALE	FL	IF	VVS	VS	SI	I
	FLAWLESS INTERNALLY FLAWLESS	VERY VERY SLIGHTLY INCLUDED	VERY SLIGHTLY INCLUDED	SLIGHTLY INCLUDED	INCLUDED	

The laboratory grown diamond described in this Report (Report) has been graded, tested, analyzed, examined and/or inscribed by International Gemological Institute (IGI). A laboratory grown diamond is one that has essentially the same chemical, physical and optical properties as a natural diamond. IGI employs and utilizes those techniques and equipment currently available to IGI, including, without limitation, 10X magnification, corrected line type, binocular microscope, master color comparison stones, non-confocal infrared spectroscopy, and other instruments and/or equipment used in such other instruments and/or processes as deemed appropriate by IGI. This Report includes advised security features. A duly accredited gemologist or jeweler can advise you with regard to the importance of and interrelationship between cut, color, clarity and carat weight.

**THIS REPORT IS NEITHER A GUARANTEE, VALUATION, NOR APPRAISAL OF THE GEMSTONE DESCRIBED HEREIN. PLEASE REVIEW THE LIMITATIONS AND RESTRICTIONS SET FORTH ONLINE. FOR MORE INFORMATION, VISIT [WWW.IGI.ORG](http://WWW.IGI.ORG) OR CALL 1-888-BUY-IGI.**

© INTERNATIONAL GEMOLOGICAL INSTITUTE, INC.

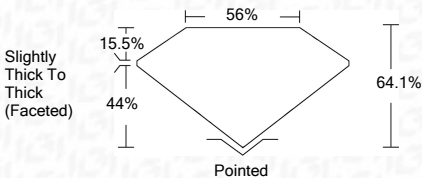
**LASERSCRIBE<sup>SM</sup>**

© IGI 2020, International Gemological Institute

FD - 10 20

**www.igi.org**

September 13, 2021	
IGI Report Number	LG492128947
Description	LABORATORY GROWN DIAMOND
Shape and Cutting Style	PEAR BRILLIANT
Measurements	10.58 X 6.58 X 4.22 MM
GRADING RESULTS	
Carat Weight	1.70 CARAT
Color Grade	F
Clarity Grade	VS 1



### ADDITIONAL GRADING INFORMATION

Polish	EXCELLENT
Symmetry	EXCELLENT
Fluorescence	NONE
Inscription(s)	LABGROWN IGI LG492128947

Comments: This Laboratory Grown Diamond was created by Chemical Vapor Deposition (CVD) growth process and may include post-growth treatment.  
Type IIa



# IGI

September 13, 2021	IGI Report No. LG48212847
PEAR BRILLIANT	1.70 CARAT
10.58 X 6.58 X 4.22 MM	VS 1
Carat Weight	64.1%
Color Grade	56%
Clarity Grade	Slightly Thick To Thick (Faceted)
Depth	Pointed
Table	EXCELLENT
Girdle	EXCELLENT
Culet	NONE
Symmetry	LAB GROWN (IGI LG48212847)
Fluorescence	
Inscription(s)	
Comments:	This Laboratory Grown Diamond was created by Chemical Vapor Deposition (CVD) growth process and may include growth treatment.
Type I	

This Laboratory Grown Diamond was created by Chemical Vapor Deposition (CVD) growth process and may include post-growth treatment.  
Type IIa