



October 6, 2021	
IGI Report Number	LG485158539
Description	LABORATORY GROWN DIAMOND
Shape and Cutting Style	CUT CORNERED RECTANGULAR MODIFIED BRILLIANT
Measurements	8.77 X 6.02 X 4.11 MM

Carat Weight	1.84 CARAT
Color Grade	G
Clarity Grade	VS 1

Polish	EXCELLENT
Symmetry	EXCELLENT
Fluorescence	NONE
Inscription(s)	LABGROWN IGI LG485158539

Comments: This Laboratory Grown Diamond was created by Chemical Vapor Deposition (CVD) growth process and may include post-growth treatment.
Type IIa

LABORATORY GROWN DIAMOND REPORT

COLOR GRADING SCALE	CL	NC	FT	VLT	LT	
	COLORLESS D-F	NEAR COLORLESS G-J	FAINT K-M	VERY LIGHT N-R	LIGHT S-Z	
CLARITY (10x) GRADING SCALE	FL	IF	VVS	VS	SI	I
	FLAWLESS INTERNALLY FLAWLESS	VERY VERY SLIGHTLY INCLUDED	VERY SLIGHTLY INCLUDED	SLIGHTLY INCLUDED	INCLUDED	

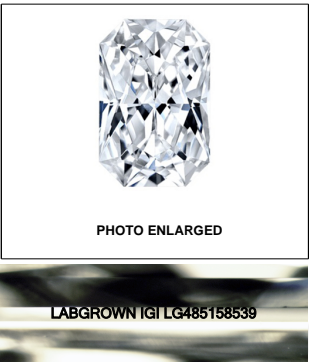
The laboratory grown diamond described in this Report (Report) has been graded, tested, analyzed, examined and/or inscribed by International Gemological Institute (IGI). A laboratory grown diamond is one that has essentially the same chemical, physical and optical properties as a natural diamond. IGI is a company owned by a Jeweler (a Jeweler) (a manufactured product). IGI employs and utilizes those techniques and equipment currently available to IGI, including, without limitation, 10X magnification, corrected microscope, binocular microscope, master tool comparison, non-destructive measuring methods, and/or other methods and/or equipment and/or such other instruments and/or processes as deemed appropriate by IGI. This Report includes advised security features. A duly accredited gemologist or jeweler can advise you with relevance the importance of and interrelationship between cut, color, clarity and carat weight.

THIS REPORT IS NEITHER A GUARANTEE, VALUATION, NOR APPRAISAL OF THE GEMSTONE DESCRIBED HEREIN. PLEASE REVIEW THE LIMITATIONS AND RESTRICTIONS SET FORTH ONLINE FOR THIS REPORT. FOR MORE INFORMATION ON THE LIMITATIONS AND DISCLAIMERS, PLEASE GO TO WWW.IGI.ORG OR CALL 1-888-BUY-IGI.

© INTERNATIONAL GEMOLOGICAL INSTITUTE, INC.

Figure 1 is a diamond-shaped diagram representing the distribution of responses for 'Medium' and 'Pointed' categories. The diagram is a diamond with a horizontal top edge and a vertical right edge. The top edge is labeled '66.5%' and the right edge is labeled '68.3%'. The left edge is labeled '52.5%' and the bottom edge is labeled '13%'. The word 'Medium' is on the left and 'Pointed' is at the bottom.

Red symbols indicate internal characteristics.
Green symbols indicate external characteristics.

**LASERSCRIBESM**

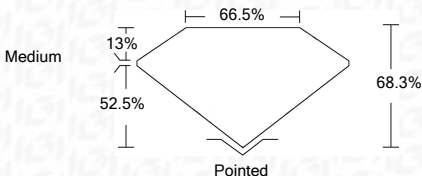
© IGI 2020, International Gemological Institute

FD - 10 20

THIS DOCUMENT WAS PRODUCED WITH THE FOLLOWING SECURITY MEASURES: SPECIAL DOCUMENT PAPER, INK SCREENS, WATERMARK BACKGROUND DESIGNS, HOLOGRAM AND OTHER SECURITY FEATURES NOT LISTED AND DO EXCEED DOCUMENT SECURITY INDUSTRY GUIDELINES.

October 6, 2021	
IGI Report Number	LG485158539
Description	LABORATORY GROWN DIAMOND
Shape and Cutting Style	CUT CORNERED RECTANGULAR MODIFIED BRILLIANT
Measurements	8.77 X 6.02 X 4.11 MM

Carat Weight	1.84 CARAT
Color Grade	G
Clarity Grade	VS 1



Polish	EXCELLENT
Symmetry	EXCELLENT
Fluorescence	NONE
Inscription(s)	LABGROWN IQ1 LG485158539

Comments: This Laboratory Grown Diamond was created by Chemical Vapor Deposition (CVD) growth process and may include post-growth treatment.
Type IIa



Cut	G	Color	Vs1	Clarity	Grade	Depth	68.3%	Table	66.5%	Girdle	Medium	Pole	Polished	Symmetry	Excellent	Fluorescence	NONE	Inscriptions(s)	LARGE GROWN LG LG4687158539	Comments:	This Laboratory Grown Diamond was created by Chemical Vapor Deposition (CVD) growth process and may include post-growth treatment.
Weight	1.84 CARAT	Carat Weight	1.84 MM	Shape	BRIGHT CUT CORNERED RECT. MODIFIED BRILLIANT	Measurements	4.7 x 4.7 x 6.02 X 4.11 MM	Finish		Grain Orientation		Orientation		Setting		Mounting		Insurance #		Type IIA	