

LABORATORY GROWN  
DIAMOND REPORT

## LABORATORY GROWN DIAMOND REPORT

## LABORATORY GROWN DIAMOND REPORT

November 30, 2021

IGI Report Number **LG502138865**

Description	LABORATORY GROWN DIAMOND
Shape and Cutting Style	PRINCESS CUT

Measurements **5.76 X 5.75 X 4.10 MM**

## GRADING RESULTS

Carat Weight	1.21 CARAT
Color Grade	E
Clarity Grade	VVS 2

### ADDITIONAL GRADING INFORMATION

Polish	EXCELLENT
Symmetry	VERY GOOD
Fluorescence	NONE
Inscription(s)	LABGROWN IGI LG502138865

Comments: As Grown - No indication of post-growth treatment.

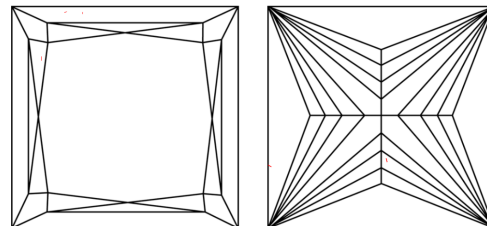
This Laboratory Grown Diamond was created by High Pressure High Temperature (HPHT) growth process.  
Type II

## PROPORTIONS

Diagram illustrating the cross-section of a diamond-shaped object, showing dimensions and labels:

- Top width: 64.5%
- Right height: 71.3%
- Left height: 53%
- Left shoulder height: 13.5%
- Label on the left: Medium To Slightly Thick
- Label at the bottom: Pointed

## CLARITY CHARACTERISTICS



### KEY TO SYMBOLS

Red symbols indicate internal characteristics.  
Green symbols indicate external characteristics.

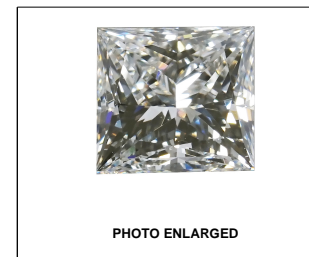
## GRADING SCALES

COLOR GRADING SCALE	CL		NC		FT		VLT		LT	
	COLORLESS D-F		NEAR COLORLESS G-J		FAINT K-M		VERY LIGHT N-R		LIGHT S-Z	
CLARITY (10x) GRADING SCALE	FL	IF	VVS		VS		SI		I	
	FLAWLESS INTERNALLY FLAWLESS		VERY VERY SLIGHTLY INCLUDED		VERY SLIGHTLY INCLUDED		SLIGHTLY INCLUDED		INCLUDED	

The laboratory grow/diamond described in this Report (Report) has been graded, tested, analyzed, examined and/or inscribed by International Gemological Institute (IGI). A laboratory grown diamond is one that has essentially the same chemical, physical and optical properties as mined diamonds with the exception of being grown by man in a manufacturing process. IGI employs and utilizes those techniques and equipment currently available to IGI, including, without limitation, 10X magnification, corrected triplet loupe, binocular microscope, master color comparison stones, non-contact-optical gages, etc., to identify and grade diamonds. IGI may utilize other instruments and/or processes as deemed appropriate by IGI. This Report includes advanced security features. A duly accredited gemologist or jeweler can advise you with respect to the importance of and interrelationship between cut, color, clarity and carat weight.

**THIS REPORT IS NEITHER A GUARANTEE, VALUATION, NOR APPRAISAL OF THE GEMSTONE DESCRIBED HEREIN. PLEASE REVIEW THE LIMITATIONS AND RESTRICTIONS SET FORTH ONLINE FOR THIS REPORT AT [WWW.IGI.ORG](http://WWW.IGI.ORG). IF YOU HAVE ANY QUESTIONS REGARDING THESE LIMITATIONS AND DISCLAIMERS, PLEASE GO TO [WWW.IGI.ORG](http://WWW.IGI.ORG) OR CALL 1-888-BUY-IGI®.**

© INTERNATIONAL GEMOLOGICAL INSTITUTE, INC.



LABGROWN | G | LG502138865

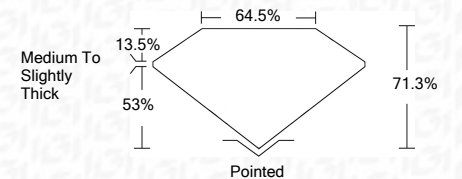
LASERSCRIBE<sup>SM</sup>

© IGI 2020, International Gemological Institute

FD - 10 20

**www.igi.org**

November 30, 2021	
IGI Report Number	LG502138865
Description	LABORATORY GROWN DIAMOND
Shape and Cutting Style	PRINCESS CUT
Measurements	5.76 X 5.75 X 4.10 MM
GRADING RESULTS	
Carat Weight	1.21 CARAT
Color Grade	E
Clarity Grade	VVS 2



### ADDITIONAL GRADING INFORMATION

Polish	EXCELLENT
Symmetry	VERY GOOD
Fluorescence	NONE
Inscription(s)	LABGROWN IGI LG502138865

Comments: As Grown - No indication of post-growth treatment.  
This Laboratory Grown Diamond was created by High Pressure High Temperature (HPHT) growth process.  
Type II

[illegible]