



ELECTRONIC COPY

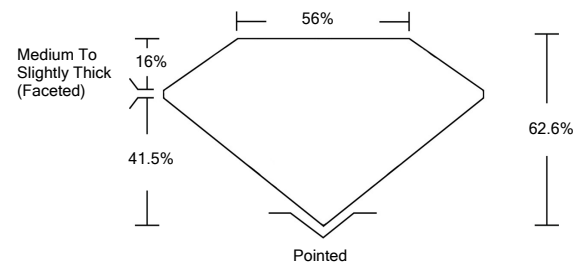
LABORATORY GROWN DIAMOND REPORT

March 25, 2022	
IGI Report Number	LG522223323
Description	LABORATORY GROWN DIAMOND
Shape and Cutting Style	PEAR BRILLIANT
Measurements	10.69 X 7.08 X 4.43 MM
GRADING RESULTS	
Carat Weight	2.01 CARATS
Color Grade	G
Clarity Grade	VS 2
ADDITIONAL GRADING INFORMATION	
Polish	EXCELLENT
Symmetry	EXCELLENT
Fluorescence	NONE
Inscription(s)	LABGROWN IGI LG522223323

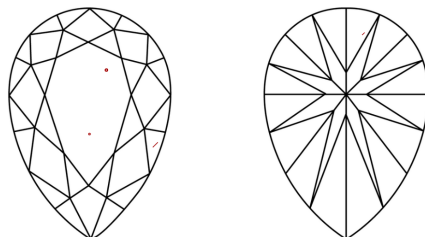
Comments: This Laboratory Grown Diamond was created by Chemical Vapor Deposition (CVD) growth process and may include post-growth treatment.
Type IIa

LG52223323

PROPORTIONS



CLARITY CHARACTERISTICS



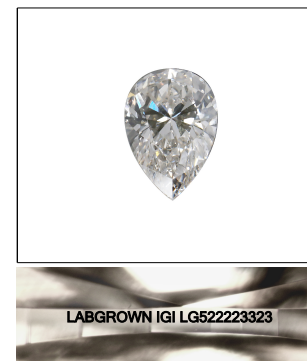
KEY TO SYMBOLS

Red symbols indicate internal characteristics.
Green symbols indicate external characteristics.

LABORATORY GROWN
DIAMOND REPORT

GRADING SCALES

COLOR GRADING SCALE	CL		NC	FT	VLT	LT
	COLORLESS D-F		NEAR COLORLESS G-J	FAINT K-M	VERY LIGHT N-R	LIGHT S-Z
CLARITY (10x) GRADING SCALE	FL	IF	VVS	VS	SI	I
	FLAWLESS INTERNALLY FLAWLESS		VERY VERY SLIGHTLY INCLUDED	VERY SLIGHTLY INCLUDED	SLIGHTLY INCLUDED	INCLUDED

LASERSCRIBESM

Sample Image Used

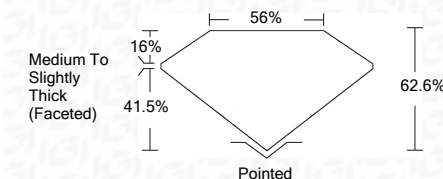


© IGI 2020, International Gemological Institute

FD - 10 20

LABORATORY GROWN DIAMOND REPORT

March 25, 2022	
IGI Report Number	LG522223323
Description	LABORATORY GROWN DIAMOND
Shape and Cutting Style	PEAR BRILLIANT
Measurements	10.69 X 7.08 X 4.43 MM
GRADING RESULTS	
Carat Weight	2.01 CARATS
Color Grade	G
Clarity Grade	VS 2



ADDITIONAL GRADING INFORMATION

Polish	EXCELLENT
Symmetry	EXCELLENT
Fluorescence	NONE
Inscription(s)	LABGROWN IGI LG522223323

Comments: This Laboratory Grown Diamond was created by Chemical Vapor Deposition (CVD) growth process and may include post-growth treatment.
Type IIa



March 26, 2022	GRI Report No LG82223323	
PEAR LBRANT	10.08 X 7.08 X 4.43 MM	
Carat Weight	2.01 CARATS	
Color Grade	VS 2	
Clarity Grade	62.6%	
Depth	56%	
Table	Medium To Slightly Thick (Faceted)	Poished
		EXCELLENT
		EXCELLENT
		NONE
		LARGROWN GRI
		LG82223323
Comments:	This Laboratory Crown Diamond was created by Chemical Vapor Deposition (CVD) growth process and may include post-growth treatment.	Type Ia