

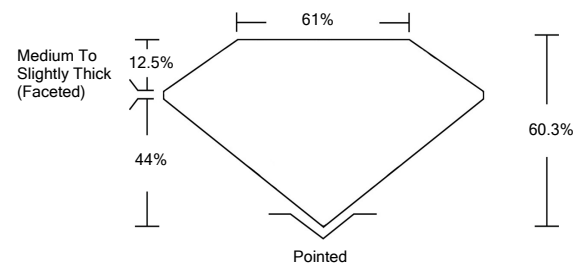


ELECTRONIC COPY

LABORATORY GROWN DIAMOND REPORT

LG522221584

PROPORTIONS



GRADING SCALES

COLOR GRADING SCALE	CL	NC	FT	VLT	LT	
	COLORLESS D-F	NEAR COLORLESS G-J	FAINT K-M	VERY LIGHT N-R	LIGHT S-Z	
CLARITY (10x) GRADING SCALE	FL	IF	VVS	VS	SI	I
	FLAWLESS INTERNALLY FLAWLESS	VERY VERY SLIGHTLY INCLUDED	VERY SLIGHTLY INCLUDED	SLIGHTLY INCLUDED	INCLUDED	

March 29, 2022

IGI Report Number

LG522221584

Description

LABORATORY GROWN DIAMOND

Shape and Cutting Style

PEAR BRILLIANT

Measurements

9.08 X 5.77 X 3.48 MM

GRADING RESULTS

Carat Weight

1.05 CARAT

Color Grade

G

Clarity Grade

VS 1

March 29, 2022

IGI Report Number

LG522221584

Description

LABORATORY GROWN DIAMOND

Shape and Cutting Style

PEAR BRILLIANT

Measurements

9.08 X 5.77 X 3.48 MM

GRADING RESULTS

Carat Weight

1.05 CARAT

Color Grade

G

Clarity Grade

VS 1

ADDITIONAL GRADING INFORMATION

Polish

EXCELLENT

Symmetry

EXCELLENT

Fluorescence

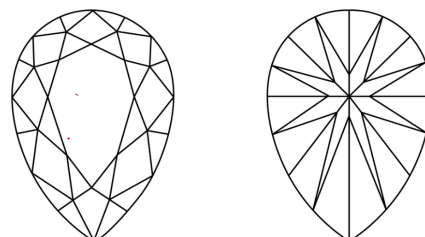
NONE

Inscription(s)

LABGROWN IGI LG522221584

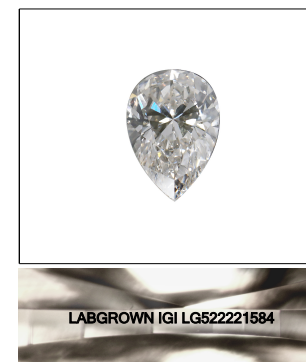
Comments: This Laboratory Grown Diamond was created by Chemical Vapor Deposition (CVD) growth process and may include post-growth treatment.
Type IIa

CLARITY CHARACTERISTICS



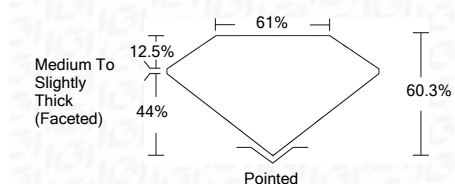
KEY TO SYMBOLS

Red symbols indicate internal characteristics.
Green symbols indicate external characteristics.



LASERSCRIBESM

Sample Image Used



ADDITIONAL GRADING INFORMATION

Polish

EXCELLENT

Symmetry

EXCELLENT

Fluorescence

NONE

Inscription(s)

LABGROWN IGI LG522221584

Comments: This Laboratory Grown Diamond was created by Chemical Vapor Deposition (CVD) growth process and may include post-growth treatment.
Type IIa



IGI

IGI Report No. LG522221584	1.05 CARAT	G	VS 1	60.3%	61%	Pointed	EXCELLENT	EXCELLENT	NONE	LABGROWN IGI LG522221584
PEAR BRILLIANT	9.08 X 5.77 X 3.48 MM					Medium To Slightly Thick (Faceted)				
Carat Weight										
Color Grade										
Clarity Grade										
Depth										
Table										
Girdle										
Culet										
Polish										
Symmetry										
Fluorescence										
Inscription(s)										
Comments:	This Laboratory Grown Diamond was created by Chemical Vapor Deposition (CVD) growth process and may include post-growth treatment. Type IIa									