



ELECTRONIC COPY

LABORATORY GROWN DIAMOND REPORT

March 28, 2022	
IGI Report Number	LG519265591
Description	LABORATORY GROWN DIAMOND
Shape and Cutting Style	ROUND BRILLIANT
Measurements	7.54 - 7.59 X 4.77 MM

GRADING RESULTS

Carat Weight	1.71 CARAT
Color Grade	F
Clarity Grade	VS 1
Cut Grade	EXCELLENT

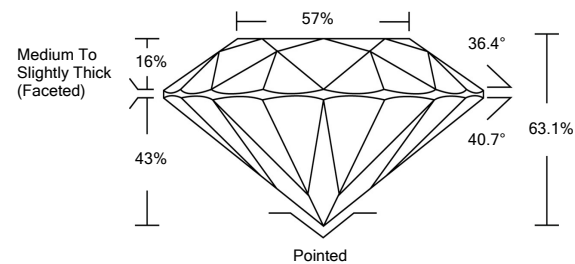
ADDITIONAL GRADING INFORMATION

Polish	EXCELLENT
Symmetry	EXCELLENT
Fluorescence	NONE
Inscription(s)	LABGROWN IGI LG519265591

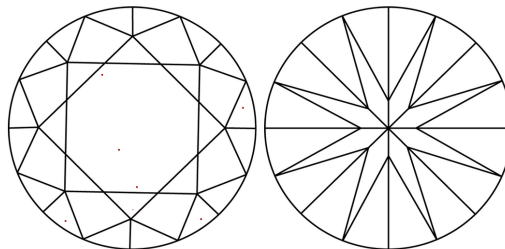
Comments: This Laboratory Grown Diamond was created by Chemical Vapor Deposition (CVD) growth process and may include post-growth treatment.
Type IIa

LG519265591

PROPORTIONS



CLARITY CHARACTERISTICS



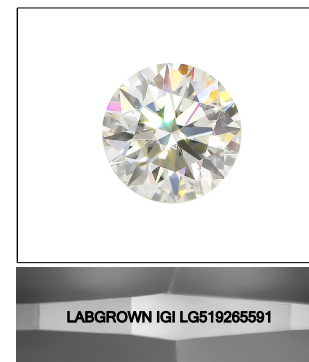
KEY TO SYMBOLS

Red symbols indicate internal characteristics.
Green symbols indicate external characteristics.

LABORATORY GROWN
DIAMOND REPORT

GRADING SCALES

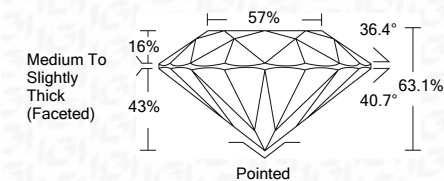
COLOR GRADING SCALE	CL		NC		FT		VLT		LT	
	COLORLESS D-F		NEAR COLORLESS G-J		FAINT K-M		VERY LIGHT N-R		LIGHT S-Z	
CLARITY (10x) GRADING SCALE	FL IF		VVS		VS		SI		I	
	FLAWLESS INTERNALLY		VERY VERY SLIGHTLY INCLUDED		VERY SLIGHTLY INCLUDED		SLIGHTLY INCLUDED		INCLUDED	

LASERSCRIBESM

Sample Image Used



March 28, 2022	
IGI Report Number	LG519265591
Description	LABORATORY GROWN DIAMOND
Shape and Cutting Style	ROUND BRILLIANT
Measurements	7.54 - 7.59 X 4.77 MM
GRADING RESULTS	
Carat Weight	1.71 CARAT
Color Grade	F
Clarity Grade	VS 1
Cut Grade	EXCELLENT



ADDITIONAL GRADING INFORMATION

Polish	EXCELLENT
Symmetry	EXCELLENT
Fluorescence	NONE
Inscription(s)	LABGROWN IGI LG519265591

Comments: This Laboratory Grown Diamond was created by Chemical Vapor Deposition (CVD) growth process and may include post-growth treatment.
Type IIa



March 28, 2022	Report No LG-2022-007
IGI REPORT NO LG-2022-007	REPORT NO LG-2022-007
7.54 - 7.59 X 4.77 mm	7.54 - 7.59 X 4.77 mm
Carat Weight	Carat Weight
Color Grade	Color Grade
Clarity Grade	Clarity Grade
Cut Grade	Cut Grade
Depth	Depth
Table	Table
Girdle	Girdle
Culet	Culet
Polish	Polish
Symmetry	Symmetry
Fluorescence	Fluorescence
Inscription(s)	Inscription(s)
Comments:	Comments:
This Laboratory has analyzed this gemstone by Chemical Vapor Deposition (CVD) process and may contain treatment.	This Laboratory has analyzed this gemstone by Chemical Vapor Deposition (CVD) process and may contain treatment.
Type IIa	Type IIa

Comments:
This Laboratory Grown Diamond was created by Chemical Vapor Deposition (CVD) growth process and may include post-growth treatment.



THIS DOCUMENT WAS PRODUCED WITH THE FOLLOWING SECURITY MEASURES: SPECIAL DOCUMENT PAPER, INK SCREENS, WATERMARK, BACKGROUND DESIGNS, HOLOGRAM AND OTHER SECURITY FEATURES NOT LISTED AND DO EXCEED DOCUMENT SECURITY INDUSTRY GUIDELINE