

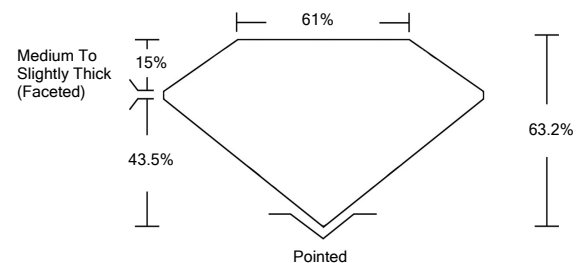


ELECTRONIC COPY

LABORATORY GROWN DIAMOND REPORT

LG529246360

PROPORTIONS



GRADING SCALES

COLOR GRADING SCALE	CL	NC	FT	VL	LT	
	COLORLESS D-F	NEAR COLORLESS G-J	FAINT K-M	VERY LIGHT N-R	LIGHT S-Z	
CLARITY (10x) GRADING SCALE	FL	IF	VVS	VS	SI	I
	FLAWLESS INTERNALLY FLAWLESS	VERY VERY SLIGHTLY INCLUDED	VERY SLIGHTLY INCLUDED	SLIGHTLY INCLUDED	INCLUDED	

May 19, 2022

IGI Report Number

LG529246360

Description

**LABORATORY GROWN
DIAMOND**

Shape and Cutting Style

OVAL BRILLIANT

Measurements

10.52 X 7.41 X 4.68 MM

GRADING RESULTS

Carat Weight

2.36 CARATS

Color Grade

F

Clarity Grade

VS 2

May 19, 2022

IGI Report Number

LG529246360

Description

**LABORATORY GROWN
DIAMOND**

Shape and Cutting Style

OVAL BRILLIANT

Measurements

10.52 X 7.41 X 4.68 MM

GRADING RESULTS

Carat Weight

2.36 CARATS

Color Grade

F

Clarity Grade

VS 2

ADDITIONAL GRADING INFORMATION

Polish

EXCELLENT

Symmetry

EXCELLENT

Fluorescence

NONE

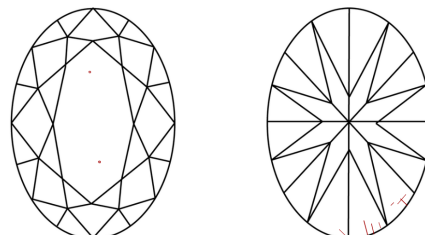
Inscription(s)

LABGROWN IGI LG529246360

Comments: This Laboratory Grown Diamond was created by Chemical Vapor Deposition (CVD) growth process and may include post-growth treatment.

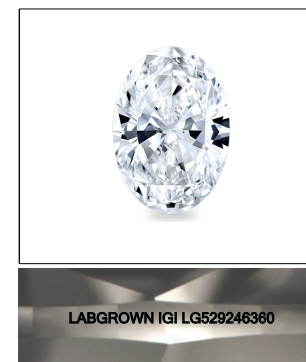
Type IIa

CLARITY CHARACTERISTICS



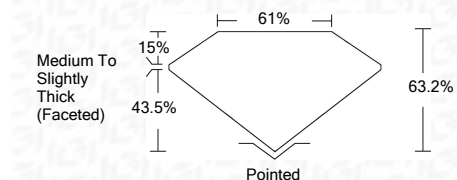
KEY TO SYMBOLS

Red symbols indicate internal characteristics.
Green symbols indicate external characteristics.



LASERSCRIBESM

Sample Image Used



ADDITIONAL GRADING INFORMATION

Polish

EXCELLENT

Symmetry

EXCELLENT

Fluorescence

NONE

Inscription(s)

LABGROWN IGI LG529246360

Comments: This Laboratory Grown Diamond was created by Chemical Vapor Deposition (CVD) growth process and may include post-growth treatment.

Type IIa



IGI Report No. LG529246360	2.36 CARATS	F	VS 2	63.2%	61%	Pointed	EXCELLENT	EXCELLENT	NONE	LABGROWN IGI LG529246360
IGI Report No. LG529246360	10.52 X 7.41 X 4.68 MM	2.36 CARATS	VS 2	63.2%	61%	Pointed	EXCELLENT	EXCELLENT	NONE	LABGROWN IGI LG529246360
IGI Report No. LG529246360	10.52 X 7.41 X 4.68 MM	2.36 CARATS	VS 2	63.2%	61%	Pointed	EXCELLENT	EXCELLENT	NONE	LABGROWN IGI LG529246360
IGI Report No. LG529246360	10.52 X 7.41 X 4.68 MM	2.36 CARATS	VS 2	63.2%	61%	Pointed	EXCELLENT	EXCELLENT	NONE	LABGROWN IGI LG529246360

This Laboratory Grown Diamond was created by Chemical Vapor Deposition (CVD) growth process and may include post-growth treatment.
Type IIa