



ELECTRONIC COPY

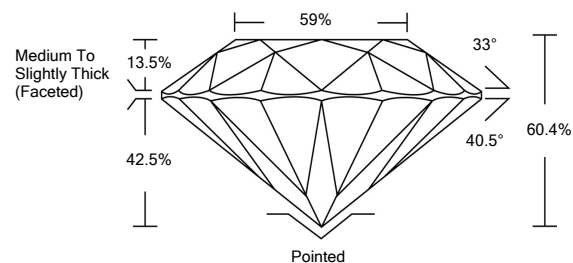
LG519255611

LABORATORY GROWN DIAMOND REPORT

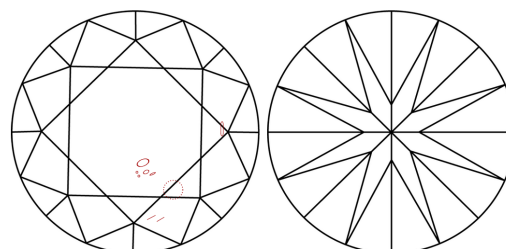
GRADING SCALES

| COLOR GRADING SCALE | CL | NC | FT | VL | LT | |
|-----------------------------|------------------------------|-----------------------------|------------------------|-------------------|-----------|---|
| | COLORLESS D-F | NEAR COLORLESS G-J | FAINT K-M | VERY LIGHT N-R | LIGHT S-Z | |
| CLARITY (10x) GRADING SCALE | FL | IF | VVS | VS | SI | I |
| | FLAWLESS INTERNALLY FLAWLESS | VERY VERY SLIGHTLY INCLUDED | VERY SLIGHTLY INCLUDED | SLIGHTLY INCLUDED | INCLUDED | |

PROPORTIONS

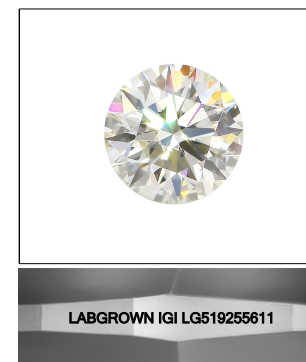


CLARITY CHARACTERISTICS



KEY TO SYMBOLS

Red symbols indicate internal characteristics.
Green symbols indicate external characteristics.



LASERSCRIBESM
Sample Image Used

March 25, 2022

IGI Report Number **LG519255611**

Description **LABORATORY GROWN DIAMOND**

Shape and Cutting Style **ROUND BRILLIANT**

Measurements **8.68 - 8.74 X 5.27 MM**

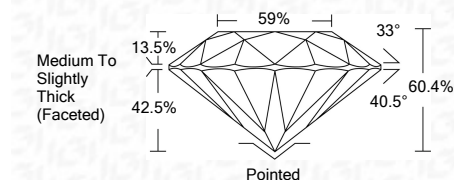
GRADING RESULTS

Carat Weight **2.50 CARATS**

Color Grade **E**

Clarity Grade **SI 1**

Cut Grade **EXCELLENT**



ADDITIONAL GRADING INFORMATION

Polish **VERY GOOD**

Symmetry **EXCELLENT**

Fluorescence **NONE**

Inscription(s) **LABGROWN IGI LG519255611**

Comments: As Grown - No indication of post-growth treatment.
This Laboratory Grown Diamond was created by High Pressure High Temperature (HPHT) growth process.
Type II

March 25, 2022

IGI Report Number **LG519255611**

Description **LABORATORY GROWN DIAMOND**

Shape and Cutting Style **ROUND BRILLIANT**

Measurements **8.68 - 8.74 X 5.27 MM**

GRADING RESULTS

Carat Weight **2.50 CARATS**

Color Grade **E**

Clarity Grade **SI 1**

Cut Grade **EXCELLENT**

ADDITIONAL GRADING INFORMATION

Polish **VERY GOOD**

Symmetry **EXCELLENT**

Fluorescence **NONE**

Inscription(s) **LABGROWN IGI LG519255611**

Comments: As Grown - No indication of post-growth treatment.
This Laboratory Grown Diamond was created by High Pressure High Temperature (HPHT) growth process.
Type II



IGI

| | | | | | | | |
|----------------------------|-----------------------|---|------|-----------|-----|------------------------------------|---|
| IGI Report No. LG519255611 | 2.50 CARATS | E | SI 1 | EXCELLENT | 89% | Medium To Slightly Thick (Faceted) | Pointed |
| ROUND BRILLIANT | 8.68 - 8.74 X 5.27 MM | | | | | | VERY GOOD |
| Carat Weight | | | | | | | EXCELLENT |
| Color Grade | | | | | | | NONE |
| Clarity Grade | | | | | | | LABGROWN IGI LG519255611 |
| Cut Grade | | | | | | | Inscription(s) |
| Depth | | | | | | | Comments: As Grown - No indication of post-growth treatment. This Laboratory Grown Diamond was created by High Pressure High Temperature (HPHT) growth process. Type II |
| Table | | | | | | | |
| Girdle | | | | | | | |
| Culet | | | | | | | |
| Polish | | | | | | | |
| Symmetry | | | | | | | |
| Fluorescence | | | | | | | |
| Inscription(s) | | | | | | | |