



ELECTRONIC COPY

LABORATORY GROWN DIAMOND REPORT

April 21, 2022
IGI Report Number LG523287549
Description LABORATORY GROWN DIAMOND
Shape and Cutting Style CUT CORNERED RECTANGULAR MODIFIED BRILLIANT
Measurements 7.67 X 5.35 X 3.56 MM

GRADING RESULTS

Carat Weight 1.23 CARAT
Color Grade H
Clarity Grade VS 1

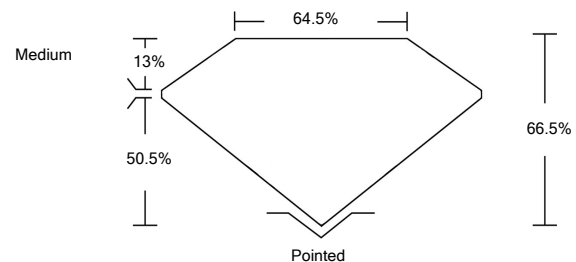
ADDITIONAL GRADING INFORMATION

Polish EXCELLENT
Symmetry EXCELLENT
Fluorescence NONE
Inscription(s) LABGROWN IGI LG523287549

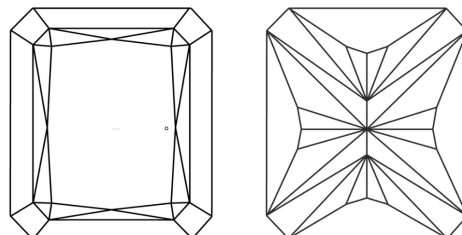
Comments: This Laboratory Grown Diamond was created by Chemical Vapor Deposition (CVD) growth process and may include post-growth treatment. Type IIa

LG523287549

PROPORTIONS



CLARITY CHARACTERISTICS



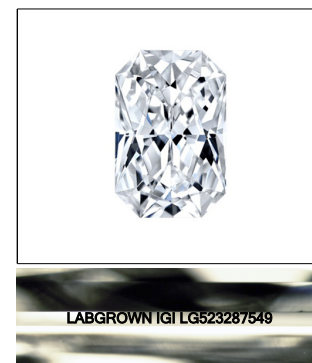
KEY TO SYMBOLS

Red symbols indicate internal characteristics.
Green symbols indicate external characteristics.

LABORATORY GROWN DIAMOND REPORT

GRADING SCALES

Table with 5 columns for Color Grading Scale (CL, NC, FT, VLT, LT) and 5 columns for Clarity (10x) Grading Scale (FL, IF, VVS, VS, SI, I). Includes sub-labels like COLORLESS D-F, NEAR COLORLESS G-J, FAINT K-M, VERY LIGHT N-R, LIGHT S-Z, etc.



LASERSCRIBE SM
Sample Image Used

LABORATORY GROWN DIAMOND REPORT

April 21, 2022
IGI Report Number LG523287549
Description LABORATORY GROWN DIAMOND
Shape and Cutting Style CUT CORNERED RECTANGULAR MODIFIED BRILLIANT
Measurements 7.67 X 5.35 X 3.56 MM

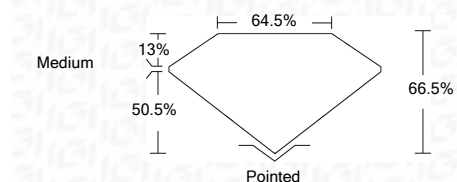
GRADING RESULTS

Carat Weight 1.23 CARAT
Color Grade H
Clarity Grade VS 1

ADDITIONAL GRADING INFORMATION

Polish EXCELLENT
Symmetry EXCELLENT
Fluorescence NONE
Inscription(s) LABGROWN IGI LG523287549

Comments: This Laboratory Grown Diamond was created by Chemical Vapor Deposition (CVD) growth process and may include post-growth treatment. Type IIa



Summary table with columns: IGI Report No., Description, Measurements, Carat Weight, Color Grade, Clarity Grade, Polish, Symmetry, Fluorescence, Inscription(s), Comments.



This Laboratory Grown Diamond was created by Chemical Vapor Deposition (CVD) growth process and may include post-growth treatment. Type IIa