



ELECTRONIC COPY

LABORATORY GROWN DIAMOND REPORT

LABORATORY GROWN DIAMOND REPORT

LG502108913

PROPORTIONS

Medium To Slightly Thick (Faceted)

63%

11.5%

46%

62%

Pointed

GRADING SCALES

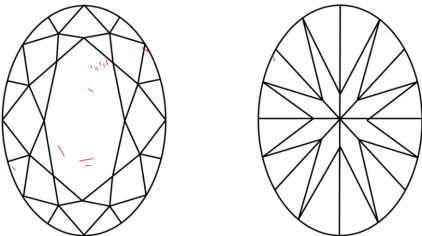
COLOR GRADING SCALE	CL	NC	FT	VLT	LT	
	COLORLESS D-F	NEAR COLORLESS G-J	FAINT K-M	VERY LIGHT N-R	LIGHT S-Z	
CLARITY (10x) GRADING SCALE	FL	IF	VVS	VS	SI	I
	FLAWLESS INTERNALLY FLAWLESS	VERY VERY SLIGHTLY INCLUDED	VERY SLIGHTLY INCLUDED	SLIGHTLY INCLUDED	INCLUDED	

The laboratory grown diamond described in this Report ("Report") has been graded, tested, analyzed, examined and/or inscribed by International Gemological Institute ("IGI"). Laboratory grown diamonds are one of the same chemical, physical and optical properties as mined diamonds. IGI uses the same grading system (a and man) as mined diamonds. IGI employs and utilizes those techniques and equipment currently available to IGI, including, without limitation, 10X magnification, corrected micrographs, ultraviolet fluorescence, infrared spectroscopy, Raman spectroscopy, measuring device, Diamond Sure™, Diamond View™, Spectrophotometer and such other instruments and/or processes as deemed appropriate by IGI. This Report includes advanced security features. A duly accredited gemologist or jeweler can advise you with regard to the importance of and interrelationship between cut, color, clarity and carat weight.

THIS REPORT IS NEITHER A GUARANTEE, VALUATION, NOR APPRAISAL OF THE GEMSTONE DESCRIBED HEREIN. PLEASE REVIEW THE LIMITATIONS AND RESTRICTIONS SET FORTH ONLINE FOR THIS REPORT. PLEASE VISIT WWW.IGI.ORG FOR THE LIMITATIONS AND DISCLAIMERS. PLEASE GO TO WWW.IGI.ORG OR CALL 1-888-BUY-IGI.

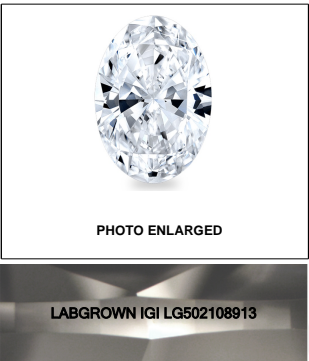
© INTERNATIONAL GEMOLOGICAL INSTITUTE, INC.

CLARITY CHARACTERISTICS



KEY TO SYMBOLS

Red symbols indicate internal characteristics.
Green symbols indicate external characteristics.

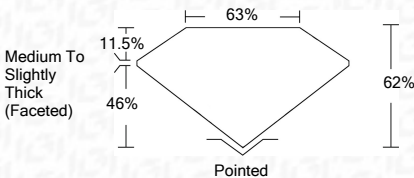
**LASERSCRIBESM**

© IGI 2020, International Gemological Institute

FD - 10 20

www.igi.org

November 16, 2021	
IGI Report Number	LG502108913
Description	LABORATORY GROWN DIAMOND
Shape and Cutting Style	OVAL BRILLIANT
Measurements	9.90 X 7.28 X 4.51 MM
GRADING RESULTS	
Carat Weight	2.02 CARATS
Color Grade	E
Clarity Grade	SI 1



ADDITIONAL GRADING INFORMATION

Polish	EXCELLENT
Symmetry	EXCELLENT
Fluorescence	NONE
Inscription(s)	LABGROWN IGI LG502108913

Comments: As Grown - No indication of post-growth treatment.
This Laboratory Grown Diamond was created by High Pressure High Temperature (HPHT) growth process.
Type II



IGI

November 16, 2021	IGI Report No. LG502108613	2.02 CARATS	81	62%	63%	Painted	EXCELLENT	EXCELLENT	NONE	LAGSDOWN IGI LG502108613	As Grown - No indication of post-growth treatment.
OVAL BRILLIANT	50.90 X 7.25 X 4.51 MM	Carat Weight	Clarity Grade	Depth	Table	Medium To Slightly Thick (Faceted)	Polish	Symmetry	Fluorescence	Inscriptions(s)	This Laboratory Grown Diamond was created by high pressure high temperature (HPHT) growth process.
		Color Grade					Culet				Type II

As Grown - No indication of post-growth treatment.
This Laboratory Grown Diamond was created by High Pressure High Temperature (HPHT) growth process.
Type II