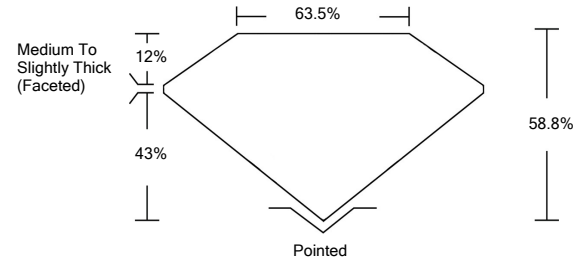




LG480155879

LABORATORY GROWN DIAMOND REPORT

PROPORTIONS



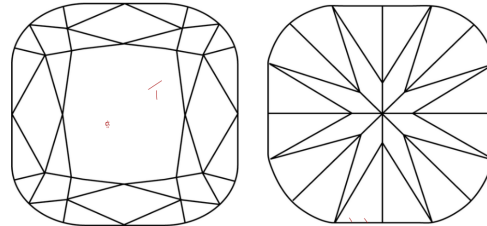
GRADING SCALES

Table with 5 columns for Color Grading Scale (CL to LT) and Clarity (10x) Grading Scale (FL to I). Includes sub-labels like 'COLORLESS D-F', 'NEAR COLORLESS G-J', etc.

The laboratory grown diamond described in this Report (Report) has been graded, tested, analyzed, examined and/or inscribed by International Gemological Institute (IGI). A laboratory grown diamond is one that has essentially the same chemical, physical and optical properties as a mined diamond...

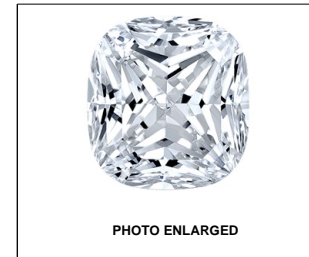
© INTERNATIONAL GEMOLOGICAL INSTITUTE, INC.

CLARITY CHARACTERISTICS



KEY TO SYMBOLS

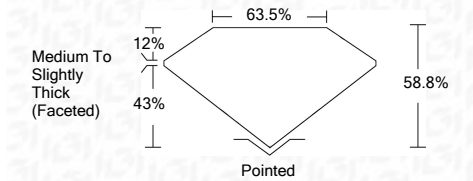
Red symbols indicate internal characteristics. Green symbols indicate external characteristics.



LABGROWN IGI LG480155879

LASERSCRIBE<sup>SM</sup>

07/01/2021 IGI Report Number LG480155879 Shape and Cutting Style SQUARE CUSHION BRILLIANT Measurements 8.00 x 7.87 x 4.63 mm GRADING RESULTS Carat Weight 2.03 CARATS Color Grade F Clarity Grade VS 2



ADDITIONAL GRADING INFORMATION

Polish EXCELLENT Symmetry EXCELLENT Fluorescence NONE Inscription(s) LABGROWN IGI LG480155879

Comments: This Laboratory Grown Diamond was created by Chemical Vapor Deposition (CVD) growth process and may include post-growth treatment. Type IIa



IGI

07/01/2021 IGI Report No. LG480155879 SQUARE CUSHION BRILLIANT 8.00 x 7.87 x 4.63 mm 2.03 CARATS F VS 2 58.8% 63.5% Medium To Slightly Thick (Faceted) Pointed EXCELLENT EXCELLENT NONE LABGROWN IGI LG480155879

This Laboratory Grown Diamond was created by Chemical Vapor Deposition (CVD) growth process and may include post-growth treatment. Type IIa

