

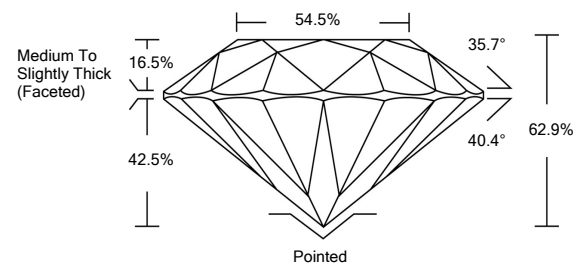


ELECTRONIC COPY

LABORATORY GROWN DIAMOND REPORT

LG517212919

PROPORTIONS



GRADING SCALES

COLOR GRADING SCALE	CL	NC	FT	VL	LT	
	COLORLESS D-F	NEAR COLORLESS G-J	FAINT K-M	VERY LIGHT N-R	LIGHT S-Z	
CLARITY (10x) GRADING SCALE	FL	IF	VVS	VS	SI	I
	FLAWLESS INTERNALLY FLAWLESS	VERY VERY SLIGHTLY INCLUDED	VERY SLIGHTLY INCLUDED	SLIGHTLY INCLUDED	INCLUDED	

February 22, 2022

IGI Report Number

LG517212919

Description

LABORATORY GROWN DIAMOND

Shape and Cutting Style

ROUND BRILLIANT

Measurements

9.12 - 9.17 X 5.76 MM

GRADING RESULTS

Carat Weight

3.00 CARATS

Color Grade

G

Clarity Grade

VS 2

Cut Grade

EXCELLENT

February 22, 2022

IGI Report Number

LG517212919

Description

LABORATORY GROWN DIAMOND

Shape and Cutting Style

ROUND BRILLIANT

Measurements

9.12 - 9.17 X 5.76 MM

GRADING RESULTS

Carat Weight

3.00 CARATS

Color Grade

G

Clarity Grade

VS 2

Cut Grade

EXCELLENT

ADDITIONAL GRADING INFORMATION

Polish

EXCELLENT

Symmetry

EXCELLENT

Fluorescence

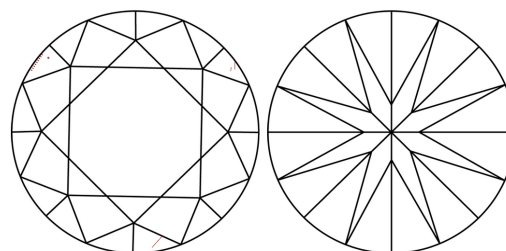
NONE

Inscription(s)

LABGROWN IGI LG517212919

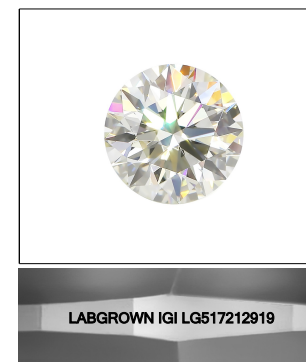
Comments: This Laboratory Grown Diamond was created by Chemical Vapor Deposition (CVD) growth process and may include post-growth treatment. Type IIa

CLARITY CHARACTERISTICS



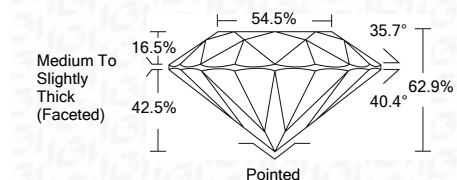
KEY TO SYMBOLS

Red symbols indicate internal characteristics.
Green symbols indicate external characteristics.



LASERSCRIBESM

Sample Image Used



ADDITIONAL GRADING INFORMATION

Polish

EXCELLENT

Symmetry

EXCELLENT

Fluorescence

NONE

Inscription(s)

LABGROWN IGI LG517212919

Comments: This Laboratory Grown Diamond was created by Chemical Vapor Deposition (CVD) growth process and may include post-growth treatment. Type IIa



IGI

IGI Report No. LG517212919	3.00 CARATS	G	VS 2	EXCELLENT	Medium To Slightly Thick (Faceted)	Pointed
ROUND BRILLIANT						EXCELLENT
9.12 - 9.17 X 5.76 MM						EXCELLENT
Carat Weight						NONE
Color Grade						LABGROWN IGI LG517212919
Clarity Grade						
Cut Grade						
Depth						
Table						
Girdle						
Culet						
Polish						
Symmetry						
Fluorescence						
Inscription(s)						

Comments: This Laboratory Grown Diamond was created by Chemical Vapor Deposition (CVD) growth process and may include post-growth treatment. Type IIa