



**ELECTRONIC COPY**

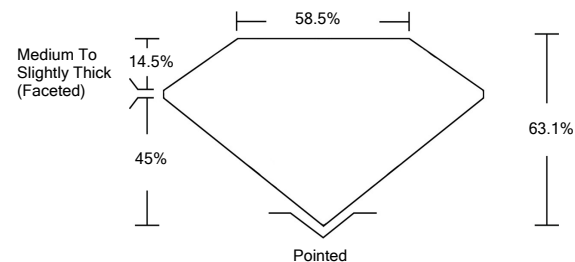
## LABORATORY GROWN DIAMOND REPORT

March 28, 2022	
IGI Report Number	LG522237241
Description	LABORATORY GROWN DIAMOND
Shape and Cutting Style	OVAL BRILLIANT
Measurements	9.26 X 6.43 X 4.06 MM
GRADING RESULTS	
Carat Weight	1.52 CARAT
Color Grade	F
Clarity Grade	VS 2
ADDITIONAL GRADING INFORMATION	
Polish	EXCELLENT
Symmetry	EXCELLENT
Fluorescence	NONE
Inscription(s)	LABGROWN IGI LG522237241

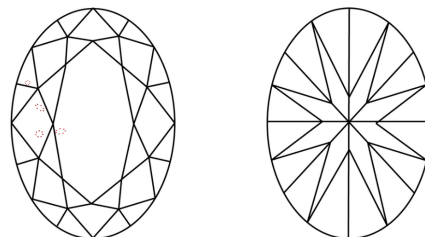
Comments: This Laboratory Grown Diamond was created by Chemical Vapor Deposition (CVD) growth process and may include post-growth treatment.  
Type IIa

LG522237241

## PROPORTIONS



## CLARITY CHARACTERISTICS



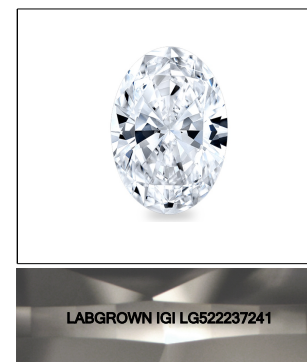
### KEY TO SYMBOLS

Red symbols indicate internal characteristics.  
Green symbols indicate external characteristics.

LABORATORY GROWN  
DIAMOND REPORT

## GRADING SCALES

COLOR GRADING SCALE	CL		NC	FT	VLT	LT
	COLORLESS D-F		NEAR COLORLESS G-J	FAINT K-M	VERY LIGHT N-R	LIGHT S-Z
CLARITY (10x) GRADING SCALE	FL	IF	VVS	VS	SI	I
	FLAWLESS INTERNALLY FLAWLESS		VERY VERY SLIGHTLY INCLUDED	VERY SLIGHTLY INCLUDED	SLIGHTLY INCLUDED	INCLUDED

LASERSCRIBE<sup>SM</sup>

Sample Image Used

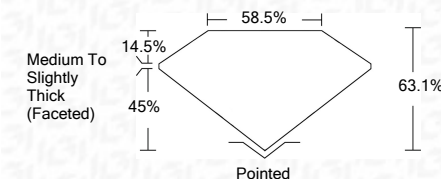


© IGI 2020, International Gemological Institute

FD - 10 20

## LABORATORY GROWN DIAMOND REPORT

March 28, 2022	
IGI Report Number	LG522237241
Description	LABORATORY GROWN DIAMOND
Shape and Cutting Style	OVAL BRILLIANT
Measurements	9.26 X 6.43 X 4.06 MM
GRADING RESULTS	
Carat Weight	1.52 CARAT
Color Grade	F
Clarity Grade	VS 2



### ADDITIONAL GRADING INFORMATION

Polish	EXCELLENT
Symmetry	EXCELLENT
Fluorescence	NONE
Inscription(s)	LABGROWN IGI LG522237241

Comments: This Laboratory Grown Diamond was created by Chemical Vapor Deposition (CVD) growth process and may include post-growth treatment.  
Type IIa



March 28, 2022	GI Report No LG62227241
OVAL BRILLIANT	
Carat Weight	1.52 CARAT
Cut Grade	VS 2
Color Grade	63.1%
Clarity Grade	59.5%
Depth	Medium to Slightly Thick (Faceted)
Girdle	Poished
Table	EXCELLENT
Symmetry	EXCELLENT
Fluorescence	NONE
Laboratory Process(es)	LABGROWN G1 LG62227241
Comments:	This Laboratory Grown Diamond was created by Chemical Vapor Deposition (CVD) growth process and may include post-growth treatment.
Type Iia	

**www.igi.org**