



ELECTRONIC COPY

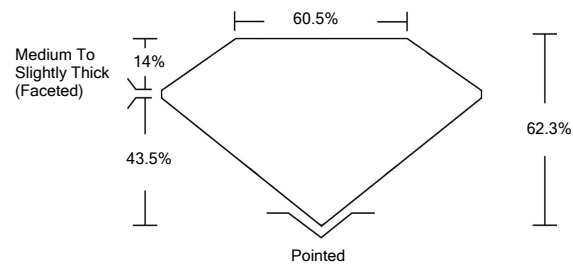
LABORATORY GROWN DIAMOND REPORT

February 17, 2022	
IGI Report Number	LG516273851
Description	LABORATORY GROWN DIAMOND
Shape and Cutting Style	OVAL BRILLIANT
Measurements	9.33 X 6.45 X 4.02 MM
GRADING RESULTS	
Carat Weight	1.52 CARAT
Color Grade	F
Clarity Grade	VS 1
ADDITIONAL GRADING INFORMATION	
Polish	EXCELLENT
Symmetry	EXCELLENT
Fluorescence	NONE
Inscription(s)	LABGROWN IGI LG516273851

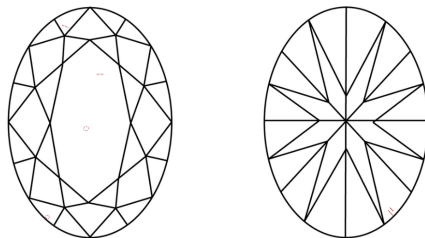
Comments: This Laboratory Grown Diamond was created by Chemical Vapor Deposition (CVD) growth process and may include post-growth treatment.
Type IIa

LG516273851

PROPORTIONS



CLARITY CHARACTERISTICS



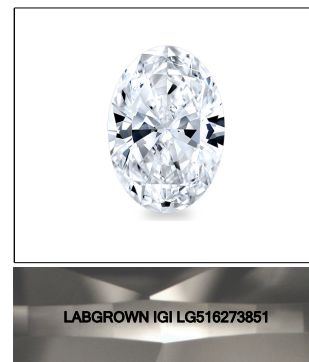
KEY TO SYMBOLS

Red symbols indicate internal characteristics.
Green symbols indicate external characteristics.

LABORATORY GROWN
DIAMOND REPORT

GRADING SCALES

COLOR GRADING SCALE	CL		NC		FT		VLT		LT	
	COLORLESS D-F		NEAR COLORLESS G-J		FAINT K-M		VERY LIGHT N-R		LIGHT S-Z	
CLARITY (10x) GRADING SCALE	FL	IF	VVS		VS		SI		I	
	FLAWLESS Internally Flawless		VERY VERY Slightly Included		VERY Slightly Included		SLIGHTLY Included		Included	

LASERSCRIBESM

Sample Image Used

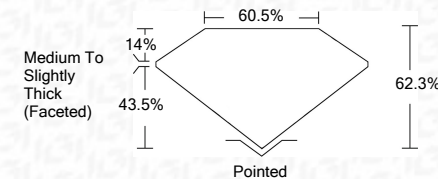


© IGI 2020, International Gemological Institute

FD - 10 20

LABORATORY GROWN DIAMOND REPORT

February 17, 2022	
IGI Report Number	LG516273851
Description	LABORATORY GROWN DIAMOND
Shape and Cutting Style	OVAL BRILLIANT
Measurements	9.33 X 6.45 X 4.02 MM
GRADING RESULTS	
Carat Weight	1.52 CARAT
Color Grade	F
Clarity Grade	VS 1



ADDITIONAL GRADING INFORMATION

Polish	EXCELLENT
Symmetry	EXCELLENT
Fluorescence	NONE
Inscription(s)	LABGROWN IGI LG516273851

Comments: This Laboratory Grown Diamond was created by Chemical Vapor Deposition (CVD) growth process and may include post-growth treatment.
Type IIa



January 17, 2022	IGI Report No LG518273851
OWAL BRILLIANT	
1.52 CARAT	
Color Weight	
3.33 X 6.45 X 4.02 MM	
Carat Weight	
VS 1	
62.5%	
60.5%	
Medium To Slightly Thick (Faceted)	
Polished	
EXCELLENT	
EXCELLENT	
NONE	
LABGROWN IGI	
LG518273851	
Comments:	
This Laboratory Grown Diamond was created by Chemical Vapor Deposition (CVD) growth process and may include post-growth treatments.	
Type Ila	