

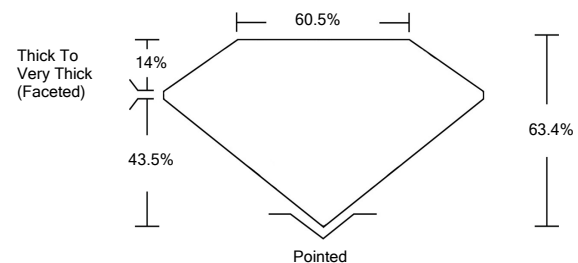


ELECTRONIC COPY

LABORATORY GROWN DIAMOND REPORT

LG516239143

PROPORTIONS



GRADING SCALES

COLOR GRADING SCALE	CL	NC	FT	VL	LT	
	COLORLESS D-F	NEAR COLORLESS G-J	FAINT K-M	VERY LIGHT N-R	LIGHT S-Z	
CLARITY (10x) GRADING SCALE	FL	IF	VVS	VS	SI	I
	FLAWLESS INTERNALLY FLAWLESS	VERY VERY SLIGHTLY INCLUDED	VERY SLIGHTLY INCLUDED	SLIGHTLY INCLUDED	INCLUDED	

February 12, 2022

IGI Report Number

LG516239143

Description

LABORATORY GROWN DIAMOND

Shape and Cutting Style

OVAL BRILLIANT

Measurements

9.75 X 6.88 X 4.36 MM

GRADING RESULTS

Carat Weight

2.00 CARATS

Color Grade

H

Clarity Grade

VS 2

February 12, 2022

IGI Report Number

LG516239143

Description

LABORATORY GROWN DIAMOND

Shape and Cutting Style

OVAL BRILLIANT

Measurements

9.75 X 6.88 X 4.36 MM

GRADING RESULTS

Carat Weight

2.00 CARATS

Color Grade

H

Clarity Grade

VS 2

ADDITIONAL GRADING INFORMATION

Polish

EXCELLENT

Symmetry

VERY GOOD

Fluorescence

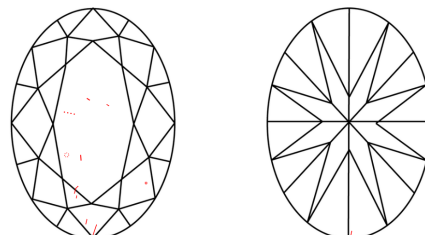
NONE

Inscription(s)

LABGROWN IGI LG516239143

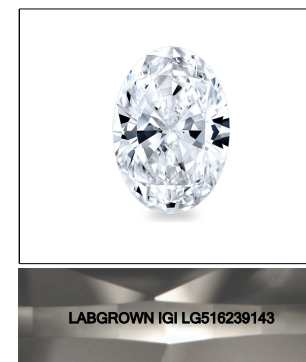
Comments: This Laboratory Grown Diamond was created by Chemical Vapor Deposition (CVD) growth process and may include post-growth treatment.
Type IIa

CLARITY CHARACTERISTICS



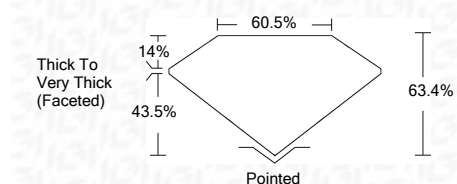
KEY TO SYMBOLS

Red symbols indicate internal characteristics.
Green symbols indicate external characteristics.



LASERSCRIBESM

Sample Image Used



ADDITIONAL GRADING INFORMATION

Polish

EXCELLENT

Symmetry

VERY GOOD

Fluorescence

NONE

Inscription(s)

LABGROWN IGI LG516239143

Comments: This Laboratory Grown Diamond was created by Chemical Vapor Deposition (CVD) growth process and may include post-growth treatment.
Type IIa



IGI

February 12, 2022	IGI Report No. LG516239143	2.00 CARATS	H
OVAL BRILLIANT	9.75 X 6.88 X 4.36 MM	63.4%	VS 2
Carat Weight	Color Grade	Depth	Table
		60.5%	80.5%
		Thick To Very Thick (Faceted)	Pointed
			EXCELLENT
			VERY GOOD
			NONE
			LABGROWN IGI LG516239143
			Comments:

This Laboratory Grown Diamond was created by Chemical Vapor Deposition (CVD) growth process and may include post-growth treatment.
Type IIa