



**ELECTRONIC COPY**

# LABORATORY GROWN DIAMOND REPORT

# LABORATORY GROWN DIAMOND REPORT

### PROPORTIONS

Diagram illustrating the proportions of a diamond, labeled LG506178699. The proportions are defined by the following measurements:

- Width: 56.5%
- Depth: 42.5%
- Table: 17%
- Crown Angle: 38°
- Pavilion Angle: 40.6°
- Height: 64.6%

The diagram also indicates the diamond is "lightly Thick faceted)" and "Pointed".

## GRADING SCALES

COLOR GRADING SCALE	CL	NC	FT	VLT	LT
	COLORLESS D-F	NEAR COLORLESS G-J	FAINT K-M	VERY LIGHT N-R	LIGHT S-Z
CLARITY (10x) GRADING SCALE	FL	VVS	VS	SI	I
	FLAWLESS INTERNALLY FLAWLESS	VERY VERY SLIGHTLY INCLUDED	VERY SLIGHTLY INCLUDED	SLIGHTLY INCLUDED	INCLUDED

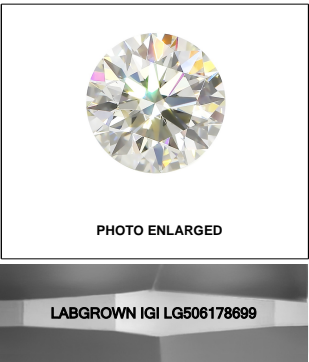
The laboratory grown diamond described in this Report ("Report") has been graded, tested, analyzed, examined and/or inscribed by International Gemological Institute (I.G.I.). A laboratory grown diamond is one that has essentially the same chemical, physical and optical properties as a natural diamond except it was created by a synthetic process (a manufactured product). I.G.I. employs and utilizes those techniques and equipment currently available to I.G.I., including, without limitation, 10X magnification, corrected incident light, binocular microscope, master color comparison stones, non-contact ultrasonic testing, infrared spectroscopy, photoluminescence, etc. The expertise of such instruments and/or processes as deemed appropriate by I.G.I. This Report includes advised security features. A duly accredited gemologist or jeweler can advise you with relevance the importance of and interrelationship between cut, color, clarity and carat weight.

**THIS REPORT IS NEITHER A GUARANTEE, VALUATION, NOR APPRAISAL OF THE GEMSTONE DESCRIBED HEREIN. PLEASE REVIEW THE LIMITATIONS AND RESTRICTIONS SET FORTH ONLINE. FOR MORE INFORMATION ON OUR POLICIES, TERMS AND CONDITIONS, VISIT US AT [WWW.IGI.ORG](http://WWW.IGI.ORG) OR CALL 1-888-BUY-IGI.**

© INTERNATIONAL GEMOLOGICAL INSTITUTE, INC.

## KEY TO SYMBOLS

Red symbols indicate internal characteristics.  
Green symbols indicate external characteristics.

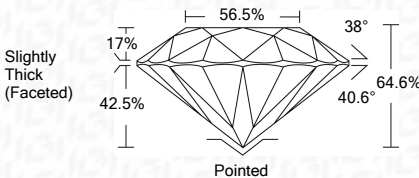
**LASERSCRIBE<sup>SM</sup>**

© IGI 2020, International Gemological Institute

FD - 10 20

Comments: This Laboratory Grown Diamond was created by Chemical Vapor Deposition (CVD) growth process and may include post-growth treatment.  
Type IIa

December 8, 2021	
IGI Report Number	LG506178699
Description	LABORATORY GROWN DIAMOND
Shape and Cutting Style	ROUND BRILLIANT
Measurements	7.15 - 7.18 X 4.62 MM
GRADING RESULTS	
Carat Weight	1.51 CARAT
Color Grade	G
Clarity Grade	SI 1
Cut Grade	VERY GOOD



### ADDITIONAL GRADING INFORMATION

Polish	EXCELLENT
Symmetry	EXCELLENT
Fluorescence	NONE
Inscription(s)	LABGROWN IGI LG506178699

Comments: This Laboratory Grown Diamond was created by Chemical Vapor Deposition (CVD) growth process and may include post-growth treatment.  
Type IIa



IGI

December 8, 2021	IGI Report No. LGS08176869	ROUND BRILLIANT	7.15 x 7.19 x 4.82 MM	1.51 CARAT	SI 1	VERY GOOD	64.6%	56.5%	Slightly Thick (Faceted)	Pointed	Excellent	EXCELLENT	EXCELLENT	NONE	LARGROWN (IGI Logo) 176869	LARGROWN (IGI Logo) 176869	Comments: This Laboratory Grown Diamond (CGD) growth process and may include post-growth treatments. Type Ila
			Color Grade		Clarity Grade	Cut Grade	Depth	Table	Girdle	Culet	Polish	Symmetry	Fluorescence	Inscription(s)			