



**ELECTRONIC COPY**

# LABORATORY GROWN DIAMOND REPORT

# LABORATORY GROWN DIAMOND REPORT

January 4, 2022	
IGI Report Number	LG510191027
Description	LABORATORY GROWN DIAMOND
Shape and Cutting Style	SQUARE CUSHION BRILLIANT
Measurements	5.93 X 5.78 X 3.85 MM
<strong>GRADING RESULTS</strong>	
Carat Weight	1.02 CARAT
Color Grade	D
Clarity Grade	VS 1

Medium To Thick (Faceted)

12.5%

50%

63%

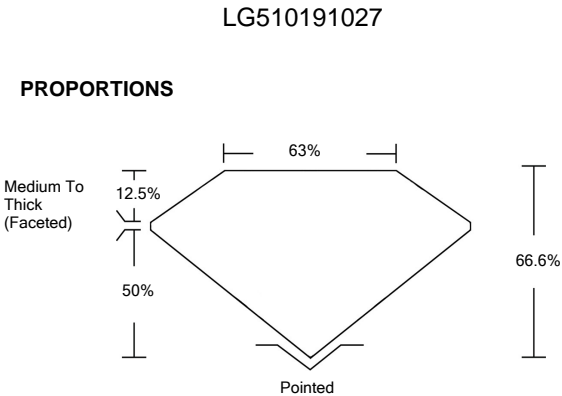
Pointed

66.6%

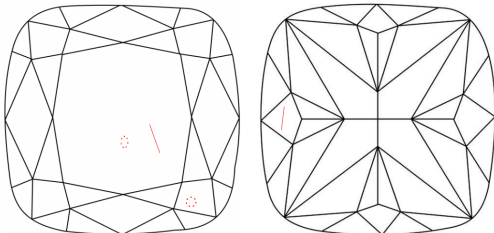
### ADDITIONAL GRADING INFORMATION

Polish	EXCELLENT
Symmetry	EXCELLENT
Fluorescence	NONE
Inscription(s)	LABGROWN IGI LG510191027

Comments: As Grown - No indication of post-growth treatment.  
This Laboratory Grown Diamond was created by High Pressure High Temperature (HPHT) growth process.  
Type II



## CLARITY CHARACTERISTICS



## KEY TO SYMBOLS

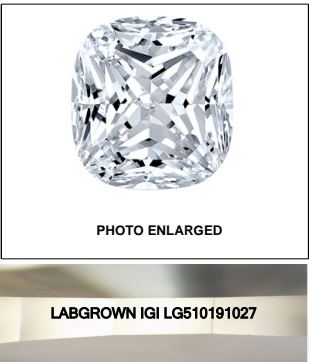
Red symbols indicate internal characteristics.  
Green symbols indicate external characteristics.

## GRADING SCALES

COLOR GRADING SCALE	CL		NC	FT	VLT	LT
	COLORLESS D-F		NEAR COLORLESS G-J	FAINT K-M	VERY LIGHT N-R	LIGHT S-Z
CLARITY (10x) GRADING SCALE	FL	IF	VVS	VS	SI	I
	FLAWLESS INTERNALLY FLAWLESS		VERY VERY SLIGHTLY INCLUDED	VERY SLIGHTLY INCLUDED	SLIGHTLY INCLUDED	INCLUDED

The laboratory grown diamond described in this Report ("Report") has been graded, tested, analyzed, examined and/or inscribed by International Gemological Institute ("IGI") in a report dated 11/11/2014. IGI is a leading international chemical, physical and optical properties testing and grading laboratory for gemstones, including diamonds (a manufactured product). IGI employs and utilizes those techniques and equipment currently available to IGI, including, without limitation, 10X magnification, corrected and uncorrected color, fluorescence, ultraviolet fluorescence, infrared spectroscopy, measuring device, Diamond Sure™, Diamond View™, Spectrophotometer and such other instruments and/or processes as deemed appropriate by IGI. This Report includes advanced security features. A duly accredited gemologist or jeweler can advise you with regard to the importance of and interrelationship between color, clarity and carat weight.

**THIS REPORT IS NEITHER A GUARANTEE, VALUATION, NOR APPRAISAL OF THE GEMSTONE DESCRIBED HEREIN. IT IS NOT INTENDED TO REVISE THE LIMITATIONS AND RESTRICTIONS SET FORTH ABOVE. FOR A FULL DISCLOSURE OF ALL LIMITATIONS AND DISCLAIMERS, PLEASE GO TO [WWW.IGI.ORG](http://WWW.IGI.ORG) OR CALL 1-888-BUY-IGI.**

**LASERSCRIBE<sup>SM</sup>**

© IGI 2020, International Gemological Institute

FD - 10 20

**www.igi.org**



# IGI

January 4, 2022	IGI Report No. LG50191027	SQUARE CUSHION BRILLIANT	1.02 CARAT	D	VS 1	66.6%	65%	Medium To Thick (Faceted)	Pointed	EXCELLENT	EXCELLENT	NONE	LARGEDOWN (IGI)	LG50191027	As Grown - No indication of post-growth treatment. This Laboratory Grown Diamond was created by high pressure high temperature (HPHT) using a chemical vapor deposition (CVD) process. Type II
															Comments: As Grown - No indication of post-growth treatment. This Laboratory Grown Diamond was created by high pressure high temperature (HPHT) using a chemical vapor deposition (CVD) process. Type II

**As Grown - No indication of post-growth treatment.**  
**This Laboratory Grown Diamond was created by High Pressure High Temperature (HPHT) growth process.**  
**Type II**