



ELECTRONIC COPY

LABORATORY GROWN DIAMOND REPORT

Diagram illustrating the proportions of a faceted diamond, labeled LG517200809. The diagram shows a diamond shape with various measurements and labels:

- Top Label:** LG517200809
- Title:** PROPORTIONS
- Left Side Label:** Medium To Slightly Thick (Faceted)
- Measurements:**
 - Top width: 59.5%
 - Left side depth: 14%
 - Left side width: 41.5%
 - Right side depth: 59.6%
 - Bottom point: Pointed

CLARITY CHARACTERISTICS



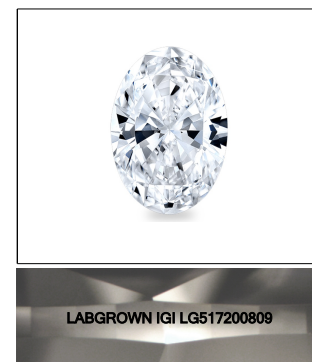
KEY TO SYMBOLS

Red symbols indicate internal characteristics.
Green symbols indicate external characteristics.

LABORATORY GROWN
DIAMOND REPORT

GRADING SCALES

COLOR GRADING SCALE	CL		NC		FT		VLT		LT	
	COLORLESS D-F		NEAR COLORLESS G-J		FAINT K-M		VERY LIGHT N-R		LIGHT S-Z	
CLARITY (10x) GRADING SCALE	FL IF		VVS		VS		SI		I	
	FLAWLESS INTERNALLY		VERY VERY SLIGHTLY INCLUDED		VERY SLIGHTLY INCLUDED		SLIGHTLY INCLUDED		INCLUDED	

LASERSCRIBESM

Sample Image Used

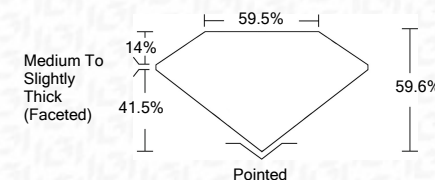


© IGI 2020, International Gemological Institute

FD - 10 20

LABORATORY GROWN DIAMOND REPORT

February 27, 2022	
IGI Report Number	LG517200809
Description	LABORATORY GROWN DIAMOND
Shape and Cutting Style	OVAL BRILLIANT
Measurements	6.58 X 6.11 X 3.64 MM
GRADING RESULTS	
Carat Weight	1.20 CARAT
Color Grade	E
Clarity Grade	VS 2



ADDITIONAL GRADING INFORMATION

Polish	EXCELLENT
Symmetry	EXCELLENT
Fluorescence	NONE
Inscription(s)	LABGROWN IGI LG517200809

Comments: As Grown - No indication of post-growth treatment.
This Laboratory Grown Diamond was created by High Pressure High Temperature (HPHT) growth process.
Type II



February 27, 2022	IGI Report No. IGG17200809
NAVY BRILLIANT 1.20 CARAT Color Weight VS 2 59.9% 59.5% Medium to Slightly Thick (Feetused) Polished EXCELLENT EXCELLENT NONE LABGROWN IGI IGG17200809	Clarity Grade Depth Table Girdle Medium to Slightly Thick (Feetused) Polished EXCELLENT EXCELLENT NONE LABGROWN IGI IGG17200809

As Grown - No Indication of post-growth treatment.