



IGI GEMOLOGICAL REPORT

IGI LABORATORY GROWN DIAMOND GRADING REPORT

01/29/2021

IGI Report Number LG459129954

Shape and Cutting Style ROUND BRILLIANT

Measurements 6.73 - 6.76 X 4.16 MM

GRADING RESULTS

Carat Weight 1.16 CARAT

Color Grade E

Clarity Grade SI 1

Cut Grade IDEAL

ADDITIONAL GRADING INFORMATION

Polish EXCELLENT

Symmetry EXCELLENT

Fluorescence NONE

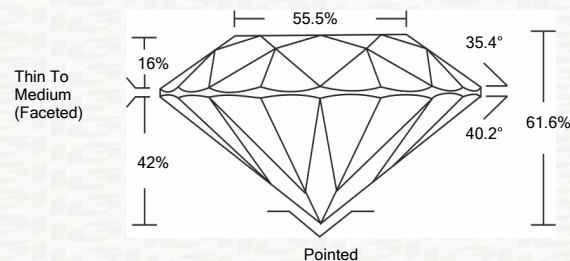
Inscription(s) LABGROWN IGI LG459129954

Comments: As Grown - No indication of post-growth treatment. This Laboratory Grown Diamond was created by High Pressure High Temperature (HPHT) growth process. Type II

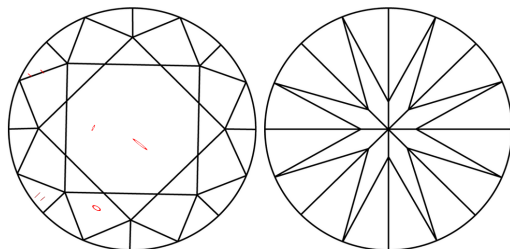


ADDITIONAL INFORMATION

PROPORTIONS



CLARITY CHARACTERISTICS



KEY TO SYMBOLS

Red symbols indicate internal characteristics. Green symbols indicate external characteristics.

This Report is subject to the terms and conditions

© IGI 2000, edition 2019 all rights reserved.

GRADING SCALES

Table with 2 rows and 5 columns showing color and clarity grading scales. Color scale: CL (Colorless D-F), NC (Near Colorless G-J), FT (Faint K-M), VLT (Very Light N-R), LT (Light S-Z). Clarity scale: FL (Flawless Internally Flawless), IF (Included Internally Flawless), VVS (Very Very Slightly Included), VS (Very Slightly Included), SI (Slightly Included), I (Included).

The laboratory grown diamond described in this Report (Report) has been graded, tested, analyzed, examined and/or inscribed by International Gemological Institute (I.G.I.). A laboratory grown diamond is one that has essentially the same chemical, physical and optical properties as a mined diamond, with the exception of being grown by man (a manufactured product). I.G.I. employs and utilizes those techniques and equipment currently available to I.G.I., including, without limitation, 10X magnification, corrected triplet loupe, binocular microscope, master color comparison stones, non-contact optical measuring devices, Diamond Sure™, Diamond View™, Spectrophotometer and such other instruments and/or processes as deemed appropriate by I.G.I. This Report includes advanced security features. A duly accredited gemologist or jeweler can advise you with respect to the importance of and interrelationship between cut, color, clarity and carat weight. THIS REPORT IS NEITHER A GUARANTEE, VALUATION, NOR APPRAISAL OF THE GEMSTONE DESCRIBED HEREIN. PLEASE REVIEW THE LIMITATIONS AND RESTRICTIONS SET FORTH ONLINE. FOR ADDITIONAL INFORMATION, IMPORTANT LIMITATIONS AND DISCLAIMERS, PLEASE GO TO WWW.IGI.ORG OR CALL 1-888-BUY-IGIS.

© INTERNATIONAL GEMOLOGICAL INSTITUTE, INC.

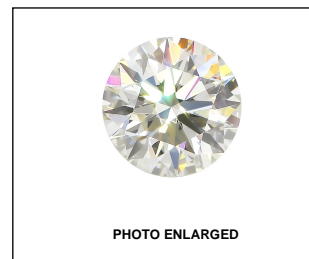


PHOTO ENLARGED



LASERSCRIBE SM



THE DOCUMENT WAS PRODUCED THE FOLLOWING SECURITY MEASURES: SPECIAL DOCUMENT PAPER, INK SCREENS, WATERMARK BACKGROUND DESIGNS HOLOGRAM AND OTHER SECURITY FEATURES NOT LISTED AND DO EXCEED DOCUMENT SECURITY INDUSTRY DUPLICATES

IGI LABORATORY GROWN DIAMOND GRADING REPORT

01/29/2021

IGI Report Number LG459129954

Shape and Cutting Style ROUND BRILLIANT

Measurements 6.73 - 6.76 X 4.16 MM

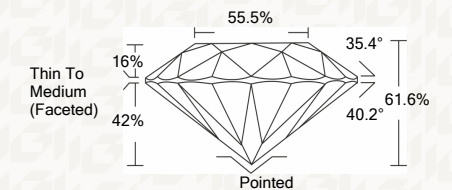
GRADING RESULTS

Carat Weight 1.16 CARAT

Color Grade E

Clarity Grade SI 1

Cut Grade IDEAL



ADDITIONAL GRADING INFORMATION

Polish EXCELLENT

Symmetry EXCELLENT

Fluorescence NONE

Inscription(s) LABGROWN IGI LG459129954

Comments: As Grown - No indication of post-growth treatment. This Laboratory Grown Diamond was created by High Pressure High Temperature (HPHT) growth process. Type II



IGI

01/29/2021

IGI Report No. LG459129954

ROUND BRILLIANT

6.73 - 6.76 X 4.16 MM

1.16 CARAT

E

SI 1

IDEAL

61.6%

55.5%

Thin To Medium (Faceted)

Pointed

EXCELLENT

EXCELLENT

NONE

LABGROWN IGI

LG459129954

Comments: As Grown - No indication of post-growth treatment. This Laboratory Grown Diamond was created by High Pressure High Temperature (HPHT) growth process. Type II