



ELECTRONIC COPY

LABORATORY GROWN DIAMOND REPORT

LABORATORY GROWN DIAMOND REPORT

Diagram illustrating the proportions of a diamond-shaped gemstone (LG506196920). The proportions are defined by the following measurements:

- Top Width:** 60.5%
- Left Side Width:** 13%
- Bottom Width:** 41.5%
- Right Side Width:** 58.8%
- Shape:** Pointed
- Facet Description:** Medium To Slightly Thick (Faceted)

CLARITY CHARACTERISTICS

KEY TO SYMBOLS

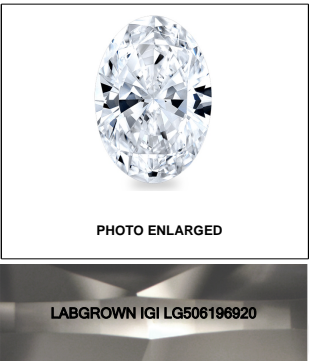
Red symbols indicate internal characteristics.
Green symbols indicate external characteristics.

GRADING SCALES

COLOR GRADING SCALE	CL	NC	FT	VLT	LT
	COLORLESS D-F	NEAR COLORLESS G-J	FAINT K-M	VERY LIGHT N-R	LIGHT S-Z
CLARITY (10x) GRADING SCALE	FL	VVS	VS	SI	I
	FLAWLESS INTERNALLY FLAWLESS	VERY VERY SLIGHTLY INCLUDED	VERY SLIGHTLY INCLUDED	SLIGHTLY INCLUDED	INCLUDED

The laboratory grown diamond described in this Report (Report) has been graded, tested, analyzed, examined and/or inscribed by International Gemological Institute (I.G.I.). A laboratory grown diamond is one that has essentially the same chemical, physical and optical properties as a natural diamond. I.G.I. employs and utilizes those techniques and equipment currently available to I.G.I., including, without limitation, 10X magnification, corrected line type, binocular microscope, master color comparison stones, non-contact, computerized measuring devices, and other instruments and equipment, as well as such other instruments and/or processes as deemed appropriate by I.G.I. This Report includes advised security features. A duly accredited gemologist or jeweler can advise you with regard to the importance of and interrelationship between cut, color, clarity and carat weight.

THIS REPORT IS NEITHER A GUARANTEE, VALUATION, NOR APPRAISAL OF THE GEMSTONE DESCRIBED HEREIN. PLEASE REVIEW THE LIMITATIONS AND RESTRICTIONS SET FORTH ONLINE. FOR MORE INFORMATION, VISIT WWW.IGI.ORG OR CALL 1-888-BUY-IGI.

**LASERSCRIBESM**

© IGI 2020, International Gemological Institute

FD - 10 20

www.igi.org

Diagram illustrating the dimensions of a diamond-shaped facet (likely a diamond-shaped facet on a gemstone):

- Top width: 60.5%
- Left side width: 41.5%
- Top-left corner: 13%
- Right side width: 58.8%
- Bottom width: 60.5%

The facet is labeled "Medium To Slightly Thick (Faceted)" and "Pointed".

ADDITIONAL GRADING INFORMATION

Polish	EXCELLENT
Symmetry	EXCELLENT
Fluorescence	NONE
Inscription(s)	LABGROWN IGI LG506196920

Comments: As Grown - No indication of post-growth treatment.
This Laboratory Grown Diamond was created by High Pressure High Temperature (HPHT) growth process.
Type II



IGI

December 11, 2021	IGI Report No. LG506198920										
OVAL BRILLIANT											
1.34 CARAT											
6.15 X 6.28 X 3.69 MM											
Carat Weight											
Color Grade											
Clarity Grade											
Depth											
Table											
Girdle											
Medium To Slightly Thick (Faceted)											
Culet											
Polish											
Symmetry											
Fluorescence											
Inscriptions(s)											
As Grown - No indication of post-growth treatment.											
This Laboratory Grown Diamond was created by high pressure high temperature (HPHT) process.											
Type II											