



ELECTRONIC COPY

LABORATORY GROWN DIAMOND REPORT

LABORATORY GROWN DIAMOND REPORT

LABORATORY GROWN DIAMOND REPORT

December 29, 2021

IGI Report Number **LG497185807**

Description	LABORATORY GROWN DIAMOND
Shape and Cutting Style	OVAL BRILLIANT

Measurements	8.01 X 5.51 X 3.55 MM
--------------	-----------------------

GRADING RESULTS

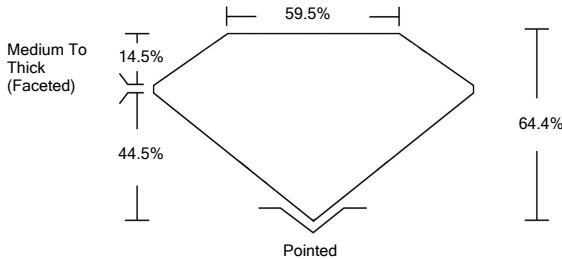
Carat Weight	1.01 CARAT
Color Grade	D
Clarity Grade	VS 1

ADDITIONAL GRADING INFORMATION

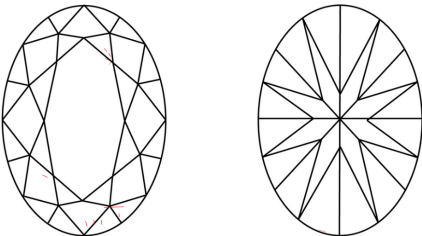
Polish	EXCELLENT
Symmetry	EXCELLENT
Fluorescence	NONE
Inscription(s)	LABGROWN IGI LG497185807

Comments: As Grown - No indication of post-growth treatment.
This Laboratory Grown Diamond was created by High Pressure High Temperature (HPHT) growth process.
Type II

PROPORTIONS



CLARITY CHARACTERISTICS



KEY TO SYMBOLS

Red symbols indicate internal characteristics.
Green symbols indicate external characteristics.

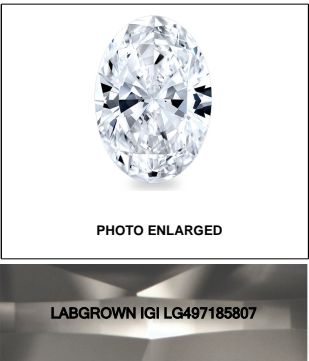
GRADING SCALES

COLOR GRADING SCALE	CL	NC	FT	VLT	LT
	COLORLESS D-F	NEAR COLORLESS G-J	FAINT K-M	VERY LIGHT N-R	LIGHT S-Z
CLARITY (10x) GRADING SCALE	FL	VVS	VS	SI	I
	FLAWLESS INTERNALLY FLAWLESS	VERY VERY SLIGHTLY INCLUDED	VERY SLIGHTLY INCLUDED	SLIGHTLY INCLUDED	INCLUDED

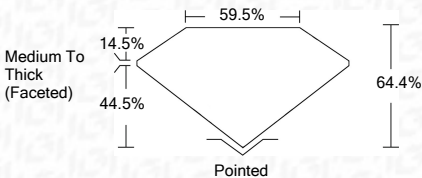
The laboratory grown diamond described in this Report ("Report") has been graded, tested, analyzed, examined and/or inscribed by International Gemological Institute ("IGI"). A laboratory grown diamond is one that has essentially the same chemical, physical and optical properties as a natural diamond, but is synthesized by a human (man) (a manufactured product). IGI employs and utilizes those techniques and equipment currently available to IGI, including, without limitation, 10X magnification, corrected and uncorrected fluorescence, ultraviolet light, color, clarity, and carat weight measuring device, Diamond Sure™, Diamond View™, Spectrophotometer and such other instruments and/or processes as deemed appropriate by IGI. This Report includes advanced security features. A duly accredited gemologist or jeweler can advise you with regard to the importance of and interrelationship between color, clarity and carat weight.

THIS REPORT IS NEITHER A GUARANTEE, VALUATION, NOR APPRAISAL OF THE GEMSTONE DESCRIBED HEREIN. PLEASE CONSULT WITH AN INDEPENDENT APPRAISER FOR AN APPRAISAL. LIMITATIONS AND RESTRICTIONS SET FORTH ONLINE. FOR A COMPLETE LIST OF LIMITATIONS AND DISCLAIMERS, PLEASE GO TO WWW.IGI.ORG OR CALL 1-888-BUY-IGI.

© INTERNATIONAL GEMOLOGICAL INSTITUTE, INC.

**LASERSCRIBESM**

December 29, 2021	
IGI Report Number	LG497185807
Description	LABORATORY GROWN DIAMOND
Shape and Cutting Style	OVAL BRILLIANT
Measurements	8.01 X 5.51 X 3.55 MM
GRADING RESULTS	
Carat Weight	1.01 CARAT
Color Grade	D
Clarity Grade	VS 1



ADDITIONAL GRADING INFORMATION

Polish	EXCELLENT
Symmetry	EXCELLENT
Fluorescence	NONE
Inscription(s)	LABGROWN IGI LG497185807

Comments: As Grown - No indication of post-growth treatment.
This Laboratory Grown Diamond was created by High Pressure High Temperature (HPHT) growth process.
Type II



IGI

Diamond Report No. LG467185807		Date of Report: 28/01/2021	
Oval Brilliant		GIA Report No. LG467185807	
Carat Weight: 1.01 CARAT		Color Grade: VS 1	
Clarity Grade: VS 1		Depth: 64.4%	
Table: 58.5%		Girdle: Medium To Thick (Faceted)	
Culet: Polished		Symmetry: EXCELLENT	
Fluorescence: NONE		Inscription(s): LAB-GROWN (GIA LG467185807)	
As Grown - No indication of post-growth treatment.		Comments:	
This Laboratory Grown Diamond was created by high pressure high temperature (HPHT) process.		Type II	

As Grown - No indication of post-growth treatment.
This Laboratory Grown Diamond was created by High Pressure High Temperature (HPHT) growth process.