



IGI GEMOLOGICAL REPORT

ADDITIONAL INFORMATION

GRADING SCALES

Table with 5 columns: CL, NC, FT, VLT, LT and 2 rows: COLOR GRADING SCALE, CLARITY (10x) GRADING SCALE

The laboratory grown diamond described in this Report (Report) has been graded, tested, analyzed, examined and/or inscribed by International Gemological Institute (IGI). A laboratory grown diamond is one that has essentially the same chemical, physical and optical properties as a mined diamond...

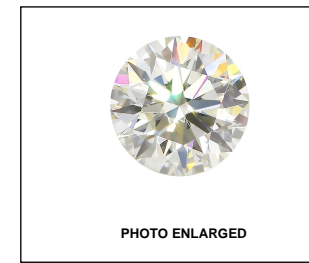
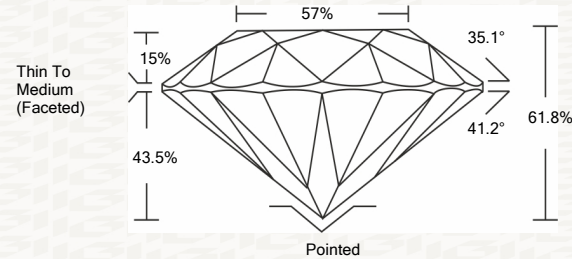
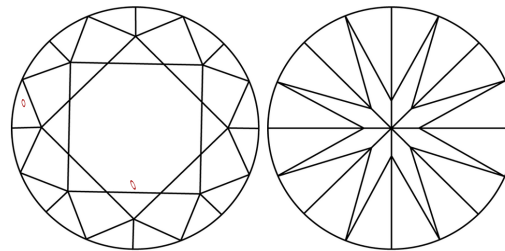


PHOTO ENLARGED

PROPORTIONS



CLARITY CHARACTERISTICS

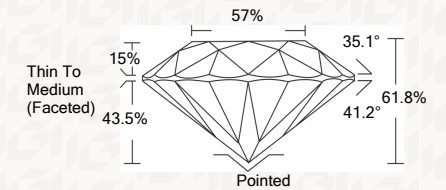


KEY TO SYMBOLS

Red symbols indicate internal characteristics. Green symbols indicate external characteristics.

IGI LABORATORY GROWN DIAMOND GRADING REPORT

02/19/2021 IGI Report Number LG462173314 Shape and Cutting Style ROUND BRILLIANT Measurements 6.53 - 6.57 X 4.05 MM GRADING RESULTS Carat Weight 1.05 CARAT Color Grade D Clarity Grade VS 2 Cut Grade IDEAL



ADDITIONAL GRADING INFORMATION

Polish EXCELLENT Symmetry EXCELLENT Fluorescence NONE Inscription(s) LABGROWN IGI LG462173314

Comments: As Grown - No indication of post-growth treatment. This Laboratory Grown Diamond was created by High Pressure High Temperature (HPHT) growth process. Type II



02/19/2021 IGI Report No. LG462173314 ROUND BRILLIANT 6.53 - 6.57 X 4.05 MM 1.05 CARAT D VS 2 IDEAL 61.8% 57% Thin To Medium (Faceted) Polished EXCELLENT EXCELLENT NONE LABGROWN IGI LG462173314

Comments: As Grown - No indication of post-growth treatment. This Laboratory Grown Diamond was created by High Pressure High Temperature (HPHT) growth process. Type II

