



LG462167297

LABORATORY GROWN DIAMOND REPORT

02/09/2021
IGI Report Number LG462167297
Shape and Cutting Style ROUND BRILLIANT
Measurements 9.40 - 9.46 x 5.68 mm

GRADING RESULTS

Carat Weight 3.12 CARATS
Color Grade G
Clarity Grade VS 1
Cut Grade IDEAL

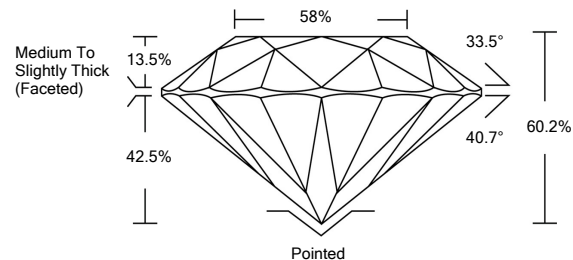
ADDITIONAL GRADING INFORMATION

Polish EXCELLENT
Symmetry EXCELLENT
Fluorescence NONE
Inscription(s) LABGROWN IGI LG462167297

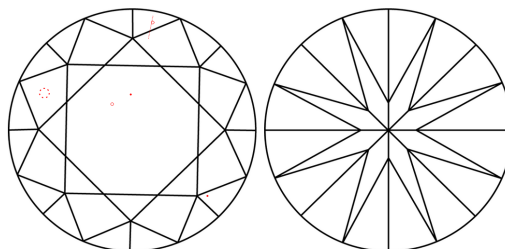
Comments: This Laboratory Grown Diamond was created by Chemical Vapor Deposition (CVD) growth process and may include post-growth treatment. Type IIa



PROPORTIONS



CLARITY CHARACTERISTICS



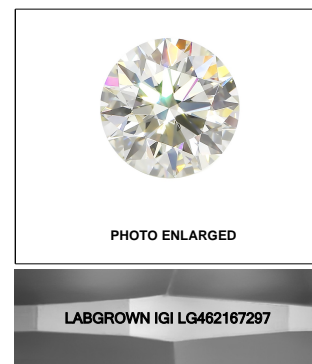
KEY TO SYMBOLS

Red symbols indicate internal characteristics. Green symbols indicate external characteristics.

GRADING SCALES

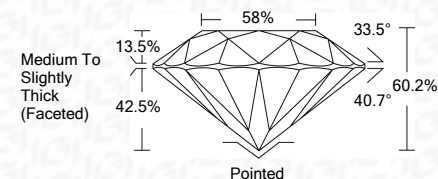
Table with 5 columns for Color Grading Scale (CL to LT) and Clarity (10x) Grading Scale (FL to I).

The laboratory grown diamond described in this Report (Report) has been graded, tested, analyzed, examined and/or inscribed by International Gemological Institute (IGI). A laboratory grown diamond is one that has essentially the same chemical, physical and optical properties as a mined diamond...



LASERSCRIBE SM

02/09/2021
IGI Report Number LG462167297
Shape and Cutting Style ROUND BRILLIANT
Measurements 9.40 - 9.46 x 5.68 mm
GRADING RESULTS
Carat Weight 3.12 CARATS
Color Grade G
Clarity Grade VS 1
Cut Grade IDEAL



ADDITIONAL GRADING INFORMATION

Polish EXCELLENT
Symmetry EXCELLENT
Fluorescence NONE
Inscription(s) LABGROWN IGI LG462167297

Comments: This Laboratory Grown Diamond was created by Chemical Vapor Deposition (CVD) growth process and may include post-growth treatment. Type IIa



IGI

02/09/2021
IGI Report No. LG462167297
ROUND BRILLIANT
9.40 - 9.46 x 5.68 mm
3.12 CARATS
G
Color Grade
Clarity Grade VS 1
Cut Grade IDEAL
Depth 60.2%
Table 58%
Medium To Slightly Thick (Faceted)
Pointed
EXCELLENT
EXCELLENT
NONE
LABGROWN IGI LG462167297
Comments: Laboratory Grown Diamond was created by Chemical Vapor Deposition (CVD) growth process and may include post-growth treatment. Type IIa

