



06/11/2021	
IGI Report Number	LG478125916
Shape and Cutting Style	ROUND BRILLIANT
Measurements	8.58 - 8.63 x 5.35 mm
GRADING RESULTS	
Carat Weight	2.43 CARATS
Color Grade	G
Clarity Grade	VS 2
Cut Grade	IDEAL
ADDITIONAL GRADING INFORMATION	
Polish	EXCELLENT
Symmetry	EXCELLENT
Fluorescence	NONE
Inscription(s)	LABGROWN IGI LG478125916

Comments: HEARTS & ARROWS
This Laboratory Grown Diamond was created by Chemical Vapor Deposition (CVD) growth process and may include post-growth treatment.
Type IIa

ADDITIONAL GRADING INFORMATION

Polish	EXCELLENT
Symmetry	EXCELLENT
Fluorescence	NONE
Inscription(s)	LABGROWN IGI LG478125916

LABORATORY GROWN
DIAMOND REPORT

LABORATORY GROWN DIAMOND REPORT

06/11/2021	
IGI Report Number	LG478125916
Shape and Cutting Style	ROUND BRILLIANT
Measurements	8.58 - 8.63 x 5.35 mm

GRADING SCALES

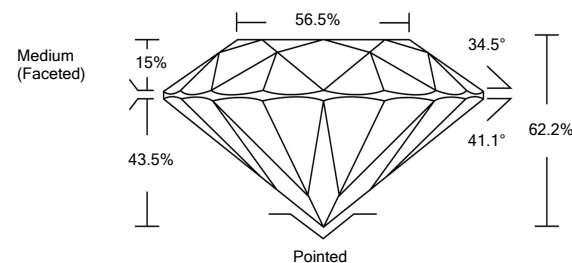
COLOR GRADING SCALE	CL		NC		FT		VLT		LT	
	COLORLESS D-F		NEAR COLORLESS G-J		FAINT K-M		VERY LIGHT N-R		LIGHT S-Z	
CLARITY (10x) GRADING SCALE	FL IF		VVS		VS		SI		I	
	FLAWLESS INTERNALLY FLAWLESS		VERY VERY SLIGHTLY INCLUDED		VERY SLIGHTLY INCLUDED		SLIGHTLY INCLUDED		INCLUDED	

The laboratory growth diamond described in this Report (Report) has been graded, tested, analyzed, examined and/or inscribed by International Gemological Institute (I.G.I.). A laboratory grown diamond is one that has essentially the same chemical, physical and optical properties as a mined diamond, with the exception of being grown by man. I.G.I. does not guarantee the absence of any inclusions or other characteristics. The Report currently available to I.G.I. including, without limitation, 10X magnification, corrected, double-throw, binocular microscope, master color comparison stones, non-contact optical spectrometer, ultraviolet light, fluorescence spectrometer, ultraviolet light, ultraviolet instruments and/or processes as deemed appropriate by I.G.I. This Report includes advanced security features. A duly accredited gemologist or jeweler can advise you with respect to the importance of and interrelationship between cut, color, clarity and carat weight.

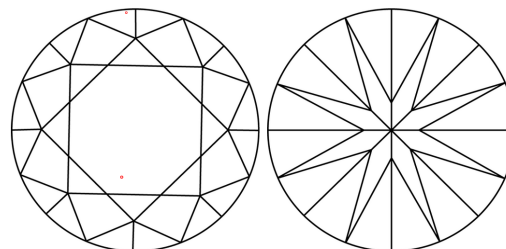
THIS REPORT IS NEITHER A GUARANTEE, VALUATION, NOR APPRAISAL OF THE GEMSTONE DESCRIBED HEREIN. PLEASE REVIEW THE LIMITATIONS AND RESTRICTIONS SET FORTH ONLINE. FOR ADDITIONAL INFORMATION, VISIT WWW.IGI.COM. LIMITATIONS AND DISCLAIMERS, PLEASE GO TO WWW.IGI.COM/US/EN/US880019/US880019.htm

© INTERNATIONAL GEMOLOGICAL INSTITUTE, INC.

PROPORTIONS

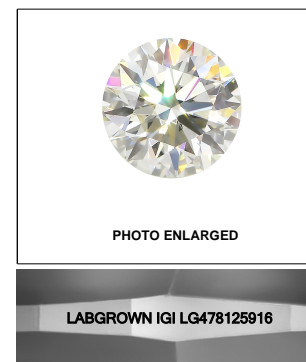
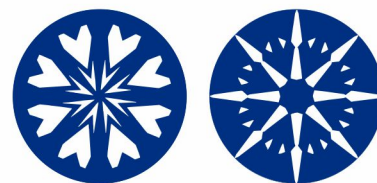


CLARITY CHARACTERISTICS



KEY TO SYMBOLS

Red symbols indicate internal characteristics.
Green symbols indicate external characteristics.

LASERSCRIBESM

© IGI 2020, International Gemological Institute

FD - 10 20

THIS DOCUMENT WAS PRODUCED WITH THE FOLLOWING SECURITY MEASURES: SPECIAL DOCUMENT PAPER, INK SCREENS, WATERMARK, BACKGROUND DESIGNS, HOLOGRAM AND OTHER SECURITY FEATURES NOT LISTED AND DO EXCEED DOCUMENT SECURITY INDUSTRY GUIDELINES



08/11/2021	IGI Report No. LG478125916
ROUND BRILLIANT	
2.45 CARATS	VS 2
6.58 - 6.63 x 5.35 mm	IDEAL
Carat Weight	62.2%
Color Grade	56.5%
	Medium (Faceted)
	Polished
	EXCELLENT
	EXCELLENT
	NONE
	LARGROWN IGI
	LG478125916
Comments:	
HEARTS & ARROWS	
This Laboratory Grown Diamond was created by Chemical Vapor Deposition (CVD) growth process and may include Type IIa growth treatment.	