



ELECTRONIC COPY

LABORATORY GROWN DIAMOND REPORT

LABORATORY GROWN DIAMOND REPORT

LABORATORY GROWN DIAMOND REPORT

| | |
|-------------------------|-----------------------------|
| September 15, 2021 | |
| IGI Report Number | LG490183522 |
| Description | LABORATORY GROWN DIAMOND |
| Shape and Cutting Style | CUSHION MODIFIED BRILLIANT |
| Measurements | 8.16 X 7.43 X 5.05 MM |

GRADING RESULTS

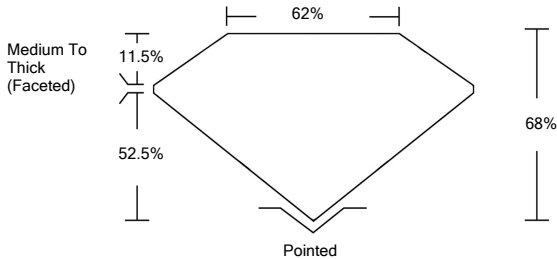
| | |
|---------------|-------------|
| Carat Weight | 2.34 CARATS |
| Color Grade | D |
| Clarity Grade | VS 2 |

ADDITIONAL GRADING INFORMATION

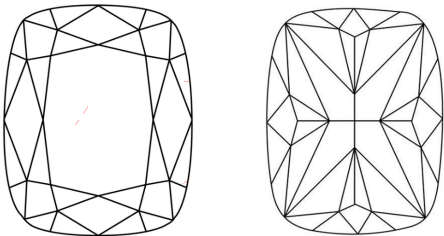
| | |
|----------------|--------------------------|
| Polish | EXCELLENT |
| Symmetry | EXCELLENT |
| Fluorescence | NONE |
| Inscription(s) | LABGROWN IGI LG490183522 |

Comments: As Grown - No indication of post-growth treatment.
This Laboratory Grown Diamond was created by High Pressure High Temperature (HPHT) growth process.
Type II

PROPORTIONS



CLARITY CHARACTERISTICS



KEY TO SYMBOLS

Red symbols indicate internal characteristics.
Green symbols indicate external characteristics.

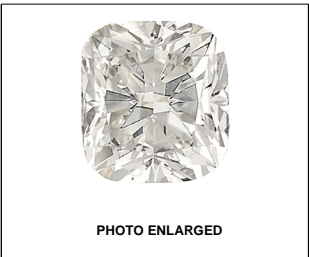
GRADING SCALES

| | | | | | | | | | | |
|-----------------------------|------------------------------------|----|-----------------------------------|--|------------------------------|--|----------------------|--|--------------|--|
| COLOR GRADING SCALE | CL | | NC | | FT | | VLT | | LT | |
| | COLORLESS D-F | | NEAR COLORLESS G-J | | FAINT K-M | | VERY LIGHT N-R | | LIGHT S-Z | |
| CLARITY (10x) GRADING SCALE | FL | IF | VVS | | VS | | SI | | I | |
| | FLAWLESS INTERNALLY FLAWLESS | | VERY VERY SLIGHTLY INCLUDED | | VERY SLIGHTLY INCLUDED | | SLIGHTLY INCLUDED | | INCLUDED | |

The laboratory grown diamond described in this Report ("Report") has been graded, tested, analyzed, examined and/or inscribed by International Gemological Institute ("IGI"). A laboratory grown diamond is one that has essentially the same chemical, physical and optical properties as a natural diamond, but is synthesized by a human (man) (a manufactured product). IGI employs and utilizes those techniques and equipment currently available to IGI, including, without limitation, 10X magnification, corrected and uncorrected fluorescence, ultraviolet light, ultraviolet fluorescence, color measuring device, Diamond Sure™, Diamond View™, Spectrophotometer and such other instruments and/or processes as deemed appropriate by IGI. This Report includes advanced security features. A duly accredited gemologist or jeweler can advise you with regard to the importance of and interrelationship between cut, color, clarity and carat weight.

THIS REPORT IS NEITHER A GUARANTEE, VALUATION, NOR APPRAISAL OF THE GEMSTONE DESCRIBED HEREIN. PLEASE CONSULT WITH AN INDEPENDENT APPRAISER FOR AN APPRAISAL. LIMITATIONS AND RESTRICTIONS SET FORTH ONLINE. FOR A COMPLETE LIST OF LIMITATIONS AND DISCLAIMERS, PLEASE GO TO WWW.IGI.ORG OR CALL 1-888-BUY-IGI.

© INTERNATIONAL GEMOLOGICAL INSTITUTE, INC.

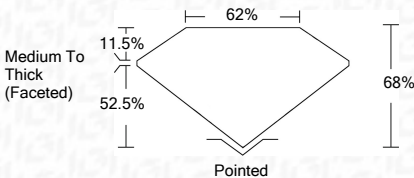
**LASERSCRIBESM**

© IGI 2020, International Gemological Institute

FD - 10 20

www.igi.org

| | |
|-------------------------|-------------------------------|
| September 15, 2021 | |
| IGI Report Number | LG490183522 |
| Description | LABORATORY GROWN DIAMOND |
| Shape and Cutting Style | CUSHION MODIFIED BRILLIANT |
| Measurements | 8.16 X 7.43 X 5.05 MM |
| GRADING RESULTS | |
| Carat Weight | 2.34 CARATS |
| Color Grade | D |
| Clarity Grade | VS 2 |



ADDITIONAL GRADING INFORMATION

| | |
|----------------|--------------------------|
| Polish | EXCELLENT |
| Symmetry | EXCELLENT |
| Fluorescence | NONE |
| Inscription(s) | LABGROWN IGI LG490183522 |

Comments: As Grown - No indication of post-growth treatment.
This Laboratory Grown Diamond was created by High Pressure High Temperature (HPHT) growth process.
Type II



IGI

| | |
|---|-----------|
| September 15, 2021 | |
| CUSHION REPORT NO LG48018352 | |
| CUSHION REPORT NO LG48018352 | |
| 8.18 X 7.43 X 5.05 MM | |
| 2.34 CARATS | |
| D | |
| VS 2 | VS 2 |
| 68% | 68% |
| 62% | 62% |
| Medium To Thick (Faceted) | |
| Polished | Polished |
| EXCELLENT | EXCELLENT |
| EXCELLENT | EXCELLENT |
| NONE | NONE |
| LAGSDOWN (GI) | |
| LG48018352 | |
| As Grown - No indication of post-growth treatment. | |
| This Laboratory Grown Diamond was created by high pressure high temperature (HPHT) process. | |
| Type II | |