



LG468199486

Diagram illustrating the cross-section of a diamond-shaped structure. The dimensions are labeled as follows:

- Top width: 60%
- Height: 66.7%
- Bottom width: 48%
- Top thickness: 14.5%
- Overall thickness: Slightly Thick
- Bottom shape: Long

Red symbols indicate internal characteristics.
Green symbols indicate external characteristics.

ELECTRONIC COPY

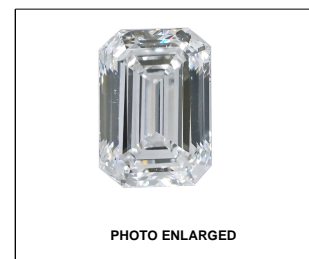
LABORATORY GROWN
DIAMOND REPORT

GRADING SCALES

COLOR GRADING SCALE	CL		NC		FT		VLT		LT	
	COLORLESS D-F		NEAR COLORLESS G-J		FAINT K-M		VERY LIGHT N-R		LIGHT S-Z	
CLARITY (10x) GRADING SCALE	FL IF		VVS		VS		SI		I	
	FLAWLESS INTERNALLY		VERY VERY SLIGHTLY INCLUDED		VERY SLIGHTLY INCLUDED		SLIGHTLY INCLUDED		INCLUDED	

The laboratory grown diamond described in this Report (Report) has been graded, tested, analyzed, examined and/or inscribed by International Gemological Institute (I.G.I.). A laboratory grown diamond is one that has essentially the same chemical, physical and optical properties as a mined diamond, with the exception of being grown by man. This Report is not intended to be used as a substitute for a diamond certificate. The Report is currently available to I.G.I. including, without limitation, 10X magnification, corrected triplet loupe, binocular microscope, master color comparison stones, non-contact optical spectrometer, ultraviolet light, and/or other instruments and/or processes as deemed appropriate by I.G.I. This Report includes additional security features. A duly accredited gemologist or jeweler can advise you with respect to the importance of and interrelationship between cut, color, clarity and carat weight.

THIS REPORT IS NEITHER A GUARANTEE, VALUATION, NOR APPRAISAL OF THE GEMSTONE DESCRIBED HEREIN. PLEASE REVIEW THE LIMITATIONS AND RESTRICTIONS SET FORTH ONLINE. FOR MORE INFORMATION, PLEASE VISIT WWW.IGI.ORG OR CALL 1-888-BUY-IGI.



LABGROWN IGI LG468199486

LASERSCRIBESM

© IGI 2020, International Gemological Institute

FD - 10 20

THIS DOCUMENT WAS PRODUCED WITH THE FOLLOWING SECURITY MEASURES: SPECIAL DOCUMENT PAPER, INK SCREENS, WATERMARK, BACKGROUND DESIGNS, HOLOGRAM AND OTHER SECURITY FEATURES NOT LISTED AND DO EXCEED DOCUMENT SECURITY INDUSTRY GUIDELINES

LABORATORY GROWN DIAMOND REPORT

04/11/2021

IGI Report Number **LG468199486**

Shape and Cutting Style **EMERALD CUT**

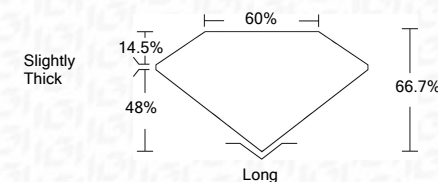
Measurements **9.11 x 6.31 x 4.21 mm**

GRADING RESULTS

Carat Weight **2.43 CARATS**

Color Grade **G**

Clarity Grade **VS 2**



ADDITIONAL GRADING INFORMATION

Polish **EXCELLENT**Symmetry **EXCELLENT**Fluorescence **NONE**

Inscription(s) **LABGROWN IGI LG468199486**

Comments: This Laboratory Grown Diamond was created by Chemical Vapor Deposition (CVD) growth process and may include post-growth treatment.
Type IIa



www.igi.org

04/11/2021	IGI Report No. LG468189486	
EMERALD CUT		
1.81 x 0.83 x 0.421 mm	2.45 CARATS	
Carat Weight		
Color Grade	G	
Clarity Grade	VS 2	
Depth	66.7%	
Table	60%	
G-Grade	Slightly Thick	
Culet	Long	
Polish	EXCELLENT	
Symmetry	EXCELLENT	
Fluorescence	NONE	
Inscriptions(s)	LARGROWN IGI LG468189486	
Comments:		
This Laboratory's Gemstone Report was created by Chemist Cristina M. Rodriguez, PhD, a specialist in CVD (CVD) growth processes and may include post-growth treatment. Type IIA		