



ELECTRONIC COPY

LABORATORY GROWN
DIAMOND REPORT

LABORATORY GROWN DIAMOND REPORT

LABORATORY GROWN DIAMOND REPORT

07/08/2021

IGI Report Number **LG483106700**

Shape and Cutting Style **ROUND BRILLIANT**

Measurements 7.27 - 7.30 X 4.57 MM

GRADING RESULTS

Carat Weight	1.50 CARAT
--------------	------------

Color Grade	D
-------------	---

Clarity Grade	SI 2
---------------	------

Cut Grade	EXCELLENT
-----------	-----------

ADDITIONAL GRADING INFORMATION

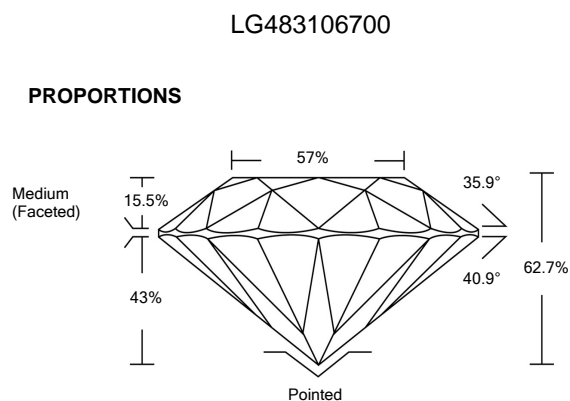
Polish **EXCELLENT**

Symmetry **EXCELLENT**

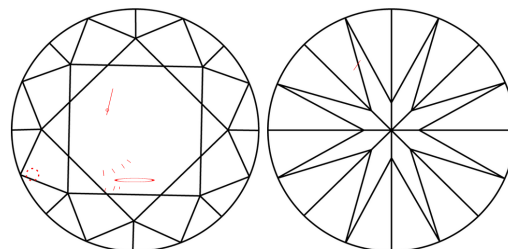
Fluorescence **NONE**

Inscription(s)	LABGROWN IGI LG483106700
----------------	--------------------------

Comments: As Grown - No indication of post-growth treatment.
This Laboratory Grown Diamond was created by High Pressure High Temperature (HPHT) growth process.
Type II



CLARITY CHARACTERISTICS



KEY TO SYMBOLS

Red symbols indicate internal characteristics.
Green symbols indicate external characteristics.

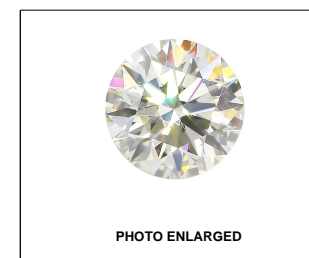
GRADING SCALES

COLOR GRADING SCALE	CL		NC		FT		VLT		LT	
	COLORLESS D-F		NEAR COLORLESS G-J		FAINT K-M		VERY LIGHT N-R		LIGHT S-Z	
CLARITY (10x) GRADING SCALE	FL IF		VVS		VS		SI		I	
	FLAWLESS INTERNALLY FLAWLESS		VERY VERY SLIGHTLY INCLUDED		VERY SLIGHTLY INCLUDED		SLIGHTLY INCLUDED		INCLUDED	

The laboratory grown diamond described in this Report ("Report") has been graded, tested, analyzed, examined and/or inscribed by International Gemological Institute ("IGI"). A laboratory grown diamond is one that has essentially the same chemical, physical and optical properties as a mined diamond, with the exception of being grown by high pressure, high temperature and/or chemical vapor deposition processes. IGI's grading system is currently available to IGI, including, without limitation, 10X magnification, corrected triplet loupe, binocular microscope, master color comparison stones, non-contact-optical acoustic property detector, ultraviolet fluorescence spectrometer, and other instruments and/or processes as deemed appropriate by IGI. This Report includes, but does not constitute, an appraisal of the diamond. IGI's Report is intended to provide information and assist in the purchase of diamonds and related instruments and/or processes as deemed appropriate by IGI. This Report includes, but does not constitute, an appraisal of the diamond. IGI's Report is intended to provide information and assist in the purchase of diamonds and related instruments and/or processes as deemed appropriate by IGI. This Report includes, but does not constitute, an appraisal of the diamond. IGI's Report is intended to provide information and assist in the purchase of diamonds and related instruments and/or processes as deemed appropriate by IGI.

THIS REPORT IS NEITHER A GUARANTEE, VALUATION, NOR APPRAISAL OF THE GEMSTONE DESCRIBED HEREIN. PLEASE REVIEW THE LIMITATIONS AND RESTRICTIONS SET FORTH ONLINE FOR THE REPORT INFORMATION. PLEASE REVIEW THE LIMITATIONS AND DISCLAIMERS, PLEASE GO TO WWW.IGI.GRAPHICSONLINE.COM/ALL-IGI-REPORT-IGI

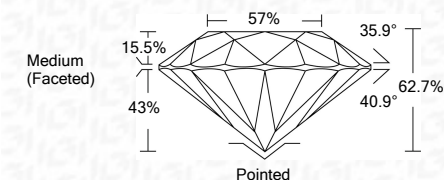
© INTERNATIONAL GEMOLOGICAL INSTITUTE, INC.



LABGROWN IGI LG483106700

LASERSCRIBESM

07/08/2021	
IGI Report Number	LG483106700
Shape and Cutting Style	ROUND BRILLIANT
Measurements	7.27 - 7.30 X 4.57 MM
GRADING RESULTS	
Carat Weight	1.50 CARAT
Color Grade	D
Clarity Grade	SI 2
Cut Grade	EXCELLENT



ADDITIONAL GRADING INFORMATION

Polish	EXCELLENT
Symmetry	EXCELLENT
Fluorescence	NONE
Inscription(s)	LABGROWN IGI LG483106700

Comments: As Grown - No indication of post-growth treatment.
This Laboratory Grown Diamond was created by High Pressure High Temperature (HPHT) growth process.
Type II



07/08/2021	IGI Report No LG483106700
ROUND BRILLIANT	
1.50 CARAT	S I 2
D	EXCELLENT
	62.7%
	57%
	Medium (Faceted)
	Polished
	EXCELLENT
	NONE
	LARGROWN IGI
	LAGD483106700
Comments: No indication of post-growth treatment.	
This Laboratory Grown Diamond was created by High Pressure High Temperature (HPHT) growth process.	
Type II	

Comments:
As Grown - No indication of post-growth treatment.
This Laboratory Grown Diamond was created by High Pressure High Temperature (HPHT) growth process.
Type II