



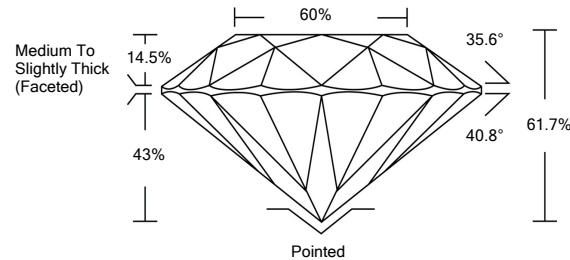
**ELECTRONIC COPY**

LG480152207

LABORATORY GROWN  
DIAMOND REPORT

LABORATORY GROWN DIAMOND REPORT

## PROPORTIONS



## GRADING RESULTS

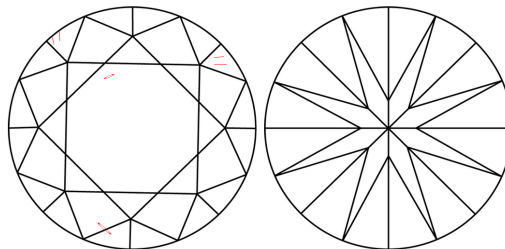
|               |            |
|---------------|------------|
| Carat Weight  | 1.50 CARAT |
| Color Grade   | E          |
| Clarity Grade | VS 2       |
| Cut Grade     | EXCELLENT  |

### ADDITIONAL GRADING INFORMATION

|                |                          |
|----------------|--------------------------|
| Polish         | EXCELLENT                |
| Symmetry       | EXCELLENT                |
| Fluorescence   | NONE                     |
| Inscription(s) | LABGROWN IGI LG480152207 |

Comments: As Grown - No indication of post-growth treatment.  
This Laboratory Grown Diamond was created by High Pressure High Temperature (HPHT) growth process.  
Type II

## CLARITY CHARACTERISTICS



## KEY TO SYMBOLS

Red symbols indicate internal characteristics.  
Green symbols indicate external characteristics.

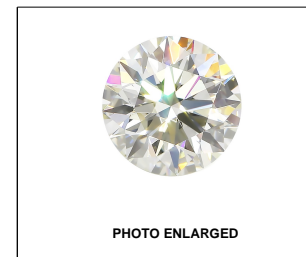
## GRADING SCALES

|                             |                              |  |                             |  |                        |  |                   |  |           |  |
|-----------------------------|------------------------------|--|-----------------------------|--|------------------------|--|-------------------|--|-----------|--|
| COLOR GRADING SCALE         | CL                           |  | NC                          |  | FT                     |  | VLT               |  | LT        |  |
|                             | COLORLESS D-F                |  | NEAR COLORLESS G-J          |  | FAINT K-M              |  | VERY LIGHT N-R    |  | LIGHT S-Z |  |
| CLARITY (10x) GRADING SCALE | FL IF                        |  | VVS                         |  | VS                     |  | SI                |  | I         |  |
|                             | FLAWLESS INTERNALLY FLAWLESS |  | VERY VERY SLIGHTLY INCLUDED |  | VERY SLIGHTLY INCLUDED |  | SLIGHTLY INCLUDED |  | INCLUDED  |  |

The laboratory growdiamond described in this Report (Report) has been graded, tested, analyzed, examined and/or inscribed by International Gemological Institute (I.G.I.). A laboratory grown diamond is one that has essentially the same chemical, physical and optical properties as a naturally occurring diamond. The production of a grown diamond is a manufacturing process. I.G.I. employs and utilizes those techniques and equipment currently available to I.G.I., including, without limitation, 10X magnification, corrected triplet loupe, binocular microscope, master color comparison stones, non-contact optical spectrometer, and/or other instruments and/or processes as deemed appropriate by I.G.I. This Report includes advanced security features. A duly accredited gemologist or jeweler can advise you with respect to the importance of and interrelationship between cut, color, clarity and carat weight.

**THIS REPORT IS NEITHER A GUARANTEE, VALUATION, NOR APPRAISAL OF THE GEMSTONE DESCRIBED HEREIN. PLEASE REVIEW THE LIMITATIONS AND RESTRICTIONS SET FORTH ONLINE. FOR MORE INFORMATION, PLEASE VISIT [WWW.IGI.ORG](http://WWW.IGI.ORG) OR CALL 1-888-BUY-IGI.**

© INTERNATIONAL GEMOLOGICAL INSTITUTE, INC.

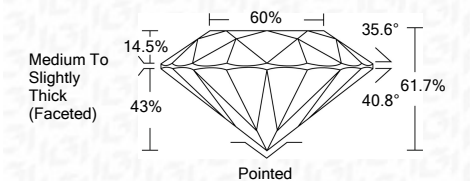


LABGROWN IGI LG480152207

LASERSCRIBE<sup>SM</sup>

## GRADING RESULTS

|               |            |
|---------------|------------|
| Carat Weight  | 1.50 CARAT |
| Color Grade   | E          |
| Clarity Grade | VS 2       |
| Cut Grade     | EXCELLENT  |



### ADDITIONAL GRADING INFORMATION

|                |                          |
|----------------|--------------------------|
| Polish         | EXCELLENT                |
| Symmetry       | EXCELLENT                |
| Fluorescence   | NONE                     |
| Inscription(s) | LABGROWN IGI LG480152207 |

Comments: As Grown - No indication of post-growth treatment.  
This Laboratory Grown Diamond was created by High Pressure High Temperature (HPHT) growth process.  
Type II



IGI

**www.igi.org**

© IGI 2020, International Gemological Institute

FD - 10 20



|            |                            |                 |                       |               |       |        |                                    |          |           |              |                 |                           |  |
|------------|----------------------------|-----------------|-----------------------|---------------|-------|--------|------------------------------------|----------|-----------|--------------|-----------------|---------------------------|--|
| 06/09/2021 | IGI Report No. LG480152207 | ROUND BRILLIANT | 1.50 CARAT            | VS 2          | 61.7% | 60%    | Medium to Slightly Thick (Faceted) | Polished | EXCELLENT | EXCELLENT    | NONE            | LARGROWN GIGI LG480152207 | As Grown - No indication of post-growth treatment.   |
|            |                            | Color Weight    | 2.08 - 7.31 x 4.51 mm | Clarity Grade | Table | Depth  |                                    |          |           |              |                 |                           | This Laboratory Grown Diamond was created by High Pressure High Temperature (HPHT) growth process. Type II |
|            |                            | Color Grade     |                       | Cut Grade     | Shape | Girdle |                                    | Culet    | Symmetry  | Fluorescence | Inscriptions(s) | Comments                  |  |