



**ELECTRONIC COPY**

# LABORATORY GROWN DIAMOND REPORT

LABORATORY GROWN DIAMOND REPORT

## LABORATORY GROWN DIAMOND REPORT

July 29, 2021

IGI Report Number **LG487193657**

Description	LABORATORY GROWN DIAMOND
Shape and Cutting Style	OVAL BRILLIANT

Measurements	11.91 X 8.39 X 5.31 MM
--------------	------------------------

## GRADING RESULTS

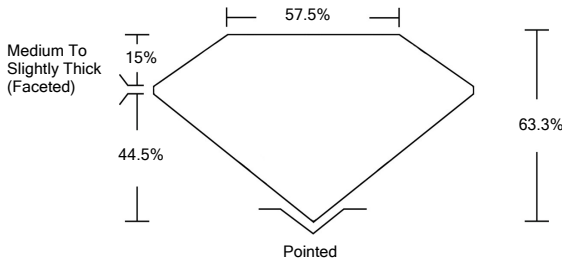
Carat Weight	3.30 CARATS
Color Grade	F
Clarity Grade	VS 1

## ADDITIONAL GRADING INFORMATION

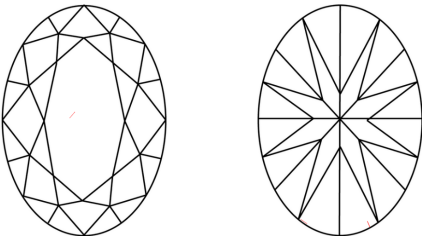
Polish	EXCELLENT
Symmetry	EXCELLENT
Fluorescence	NONE
Inscription(s)	LABGROWN IGI LG487193657

Comments: As Grown - No indication of post-growth treatment.  
This Laboratory Grown Diamond was created by High Pressure High Temperature (HPHT) growth process.  
Type II

## PROPORTIONS



## CLARITY CHARACTERISTICS



## KEY TO SYMBOLS

Red symbols indicate internal characteristics.  
Green symbols indicate external characteristics.

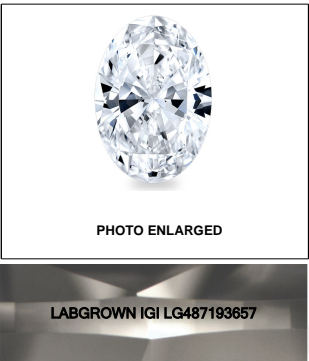
## GRADING SCALES

COLOR GRADING SCALE	CL		NC		FT		VLT		LT	
	COLORLESS D-F		NEAR COLORLESS G-J		FAINT K-M		VERY LIGHT N-R		LIGHT S-Z	
CLARITY (10x) GRADING SCALE	FL	IF	VVS		VS		SI		I	
	FLAWLESS INTERNALLY FLAWLESS		VERY VERY SLIGHTLY INCLUDED		VERY SLIGHTLY INCLUDED		SLIGHTLY INCLUDED		INCLUDED	

The laboratory grown diamond described in this Report ("Report") has been graded, tested, analyzed, examined and/or inscribed by International Gemological Institute ("IGI"). A laboratory grown diamond is one that has essentially the same chemical, physical and optical properties as a naturally occurring diamond except it was created by man (a manufactured product). IGI employs and utilizes those techniques and equipment currently available to IGI, including, without limitation, 10X magnification, corrected incident light, binocular microscope, master color comparison stones, non-contact infrared spectrometry, ultraviolet fluorescence examination, etc., and uses such other instruments and/or processes as deemed appropriate by IGI. This Report includes advanced security features. A duly accredited gemologist or jeweler can advise you with regard to the importance of and interrelationship between cut, color, clarity and carat weight.

**THIS REPORT IS NEITHER A GUARANTEE, VALUATION, NOR APPRAISAL OF THE GEMSTONE DESCRIBED HEREIN. PLEASE REVIEW THE LIMITATIONS AND RESTRICTIONS SET FORTH ONLINE. FOR MORE INFORMATION ON OUR POLICIES, TERMS AND CONDITIONS, AND DISCLAIMERS, PLEASE GO TO WWW.IGI.ORG OR CALL 1-888-BUY-IGI.**

© INTERNATIONAL GEMOLOGICAL INSTITUTE, INC.

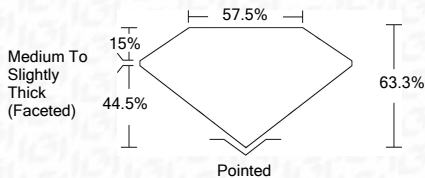
**LASERSCRIBE<sup>SM</sup>**

© IGI 2020, International Gemological Institute

FD - 10 20

**www.igi.org**

July 29, 2021	
IGI Report Number	LG487193657
Description	LABORATORY GROWN DIAMOND
Shape and Cutting Style	OVAL BRILLIANT
Measurements	11.91 X 8.39 X 5.31 MM
GRADING RESULTS	
Carat Weight	3.30 CARATS
Color Grade	F
Clarity Grade	VS 1



### ADDITIONAL GRADING INFORMATION

Polish	EXCELLENT
Symmetry	EXCELLENT
Fluorescence	NONE
Inscription(s)	LABGROWN IGI LG487193657

Comments: As Grown - No indication of post-growth treatment.  
This Laboratory Grown Diamond was created by High Pressure High Temperature (HPHT) growth process.  
Type II



IGI

<b>JGI Report No.</b>	<b>L6487193857</b>
<b>Color Grade</b>	<b>F</b>
<b>Carat Weight</b>	<b>3.30 CARATS</b>
<b>Measurements</b>	<b>11.81 X 8.38 X 5.31 MM</b>
<b>Shape</b>	<b>Oval Brilliant</b>
<b>Table</b>	<b>63.3%</b>
<b>Depth</b>	<b>57.5%</b>
<b>Girdle</b>	<b>Medium To Slightly Thick (Feasted)</b>
<b>Culet</b>	<b>Pointed</b>
<b>Symmetry</b>	<b>EXCELLENT</b>
<b>Fluorescence</b>	<b>EXCELLENT</b>
<b>Inscriptions(s)</b>	<b>NONE</b>
<b>Comments:</b>	<b>LARGE DIAMOND L6487193857</b>
<b>As Grown - No indication of post-growth treatment.</b>	
<b>This Laboratory Growth Diamond was created by High Pressure High Temperature (HPHT) growth process.</b>	
<b>Type II</b>	