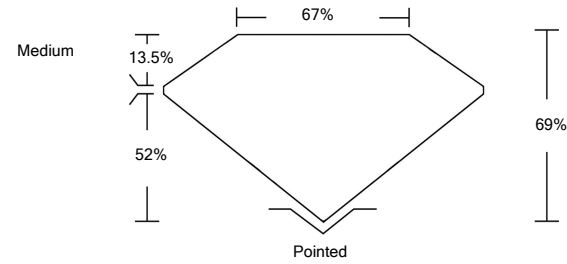




LG459199571

LABORATORY GROWN DIAMOND REPORT

PROPORTIONS



GRADING SCALES

Table with 5 columns for Color (CL, NC, FT, VLT, LT) and Clarity (FL, IF, VVS, VS, SI, I) grading scales.

The laboratory grown diamond described in this Report (Report) has been graded, tested, analyzed, examined and/or inscribed by International Gemological Institute (IGI). A laboratory grown diamond is one that has essentially the same chemical, physical and optical properties as a mined diamond...

02/04/2021 IGI Report Number LG459199571 Shape and Cutting Style CUT CORNERED RECTANGULAR MODIFIED BRILLIANT Measurements 10.78 x 7.43 x 5.13 mm

GRADING RESULTS

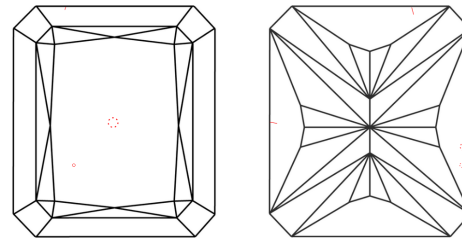
Carat Weight 3.57 CARATS Color Grade E Clarity Grade VS 1

ADDITIONAL GRADING INFORMATION

Polish VERY GOOD Symmetry EXCELLENT Fluorescence NONE Inscription(s) LABGROWN IGI LG459199571

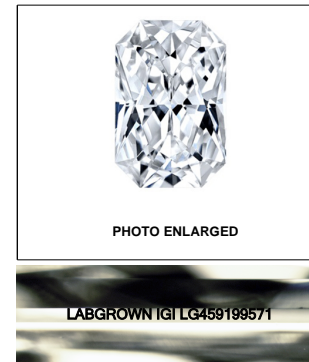
Comments: This Laboratory Grown Diamond was created by Chemical Vapor Deposition (CVD) growth process and may include post-growth treatment. Type IIa

CLARITY CHARACTERISTICS



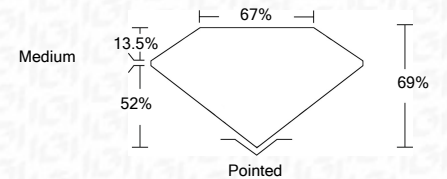
KEY TO SYMBOLS

Red symbols indicate internal characteristics. Green symbols indicate external characteristics.



LASERSCRIBE SM

02/04/2021 IGI Report Number LG459199571 Shape and Cutting Style CUT CORNERED RECTANGULAR MODIFIED BRILLIANT Measurements 10.78 x 7.43 x 5.13 mm Grading Results Carat Weight 3.57 CARATS Color Grade E Clarity Grade VS 1



ADDITIONAL GRADING INFORMATION

Polish VERY GOOD Symmetry EXCELLENT Fluorescence NONE Inscription(s) LABGROWN IGI LG459199571

Comments: This Laboratory Grown Diamond was created by Chemical Vapor Deposition (CVD) growth process and may include post-growth treatment. Type IIa



IGI

02/04/2021 IGI Report No. LG459199571 CUT CORNERED RECT. MODIFIED BRILLIANT 10.78 x 7.43 x 5.13 mm 3.57 CARATS E VS 1 69% 67% Medium Pointed VERY GOOD EXCELLENT NONE LABGROWN IGI LG459199571

This Laboratory Grown Diamond was created by Chemical Vapor Deposition (CVD) growth process and may include post-growth treatment. Type IIa