



September 12, 2021	
IGI Report Number	LG494173189
Description	LABORATORY GROWN DIAMOND
Shape and Cutting Style	PEAR BRILLIANT
Measurements	8.89 X 5.75 X 3.45 MM

Carat Weight	1.01 CARAT
Color Grade	F
Clarity Grade	VS 2

Polish	EXCELLENT
Symmetry	EXCELLENT
Fluorescence	NONE
Inscription(s)	LABGROWN IGI LG494173189

Comments: This Laboratory Grown Diamond was created by Chemical Vapor Deposition (CVD) growth process and may include post-growth treatment.  
Type IIa

LG494173189

Diagram illustrating the cross-section of a diamond-shaped component. The dimensions are as follows:

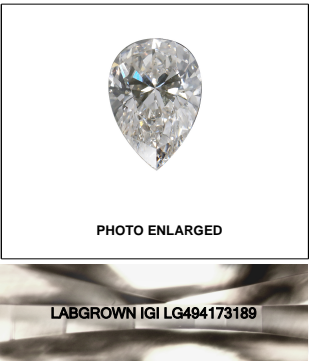
- Top width: 59.5%
- Top thickness: 12%
- Bottom thickness: 44%
- Bottom tip: Pointed
- Overall height: 60%

Red symbols indicate internal characteristics.  
Green symbols indicate external characteristics.

COLOR GRADING SCALE	CL	NC	FT	VLT	LT	
	COLORLESS D-F	NEAR COLORLESS G-J	FAINT K-M	VERY LIGHT N-R	LIGHT S-Z	
CLARITY (10x) GRADING SCALE	FL	IF	VVS	VS	SI	I
	FLAWLESS INTERNALLY FLAWLESS	VERY VERY SLIGHTLY INCLUDED	VERY SLIGHTLY INCLUDED	SLIGHTLY INCLUDED	INCLUDED	

The laboratory grown diamond described in this Report (Report) has been graded, tested, analyzed, examined and/or inscribed by International Gemological Institute (IGI). A laboratory grown diamond is one that has essentially the same chemical, physical and optical properties as a natural diamond. IGI employs and utilizes those techniques and equipment currently available to IGI, including, without limitation, 10X magnification, corrected line type, binocular microscope, master color comparison stones, non-contact, computerized refractometer, spectrometer, and/or other equipment and/or such other instruments and/or processes as deemed appropriate by IGI. This Report includes advanced security features. A duly accredited gemologist or jeweler can advise you with regard to the importance of and interrelationship between cut, color, clarity and carat weight.

**THIS REPORT IS NEITHER A GUARANTEE, VALUATION, NOR APPRAISAL OF THE GEMSTONE DESCRIBED HEREIN. PLEASE REVIEW THE LIMITATIONS AND RESTRICTIONS SET FORTH ONLINE. FOR MORE INFORMATION, VISIT [WWW.IGI.ORG](http://WWW.IGI.ORG) OR CALL 1-888-BUY-IGI.**

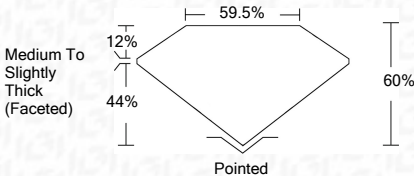
**LASERSCRIBE<sup>SM</sup>**

© IGI 2020, International Gemological Institute

FD - 10 20

September 12, 2021	
IGI Report Number	LG494173189
Description	LABORATORY GROWN DIAMOND
Shape and Cutting Style	PEAR BRILLIANT
Measurements	8.89 X 5.75 X 3.45 MM

Carat Weight	1.01 CARAT
Color Grade	F
Clarity Grade	VS 2



Polish	EXCELLENT
Symmetry	EXCELLENT
Fluorescence	NONE
Inscription(s)	LABGROWN IGI LG494173189

Comments: This Laboratory Grown Diamond was created by Chemical Vapor Deposition (CVD) growth process and may include post-growth treatment.  
Type IIa



September 12, 2021 IGI Report No. LG46173189		PEAR BRILLIANT 58.89 X 5.75 X 3.45 MM Carat Weight Color Grade		1.01 CARAT F VS 2 60% 59.5% Medium to Slightly Thick (Faceted)		Polished EXCELLENT EXCELLENT NONE LABGROWN IGI LG46173189	
Clarity Grade Depth Table Girdle		Fluorescence Inclusions (p)		Comments: This Laboratory Grown Diamond was created by Chemical Vapor Deposition (CVD) growth process and may include some growth treatment. Type IIb			

This Laboratory Grown Diamond was created by Chemical Vapor Deposition (CVD) growth process and may include post-growth treatment.  
Type IIa